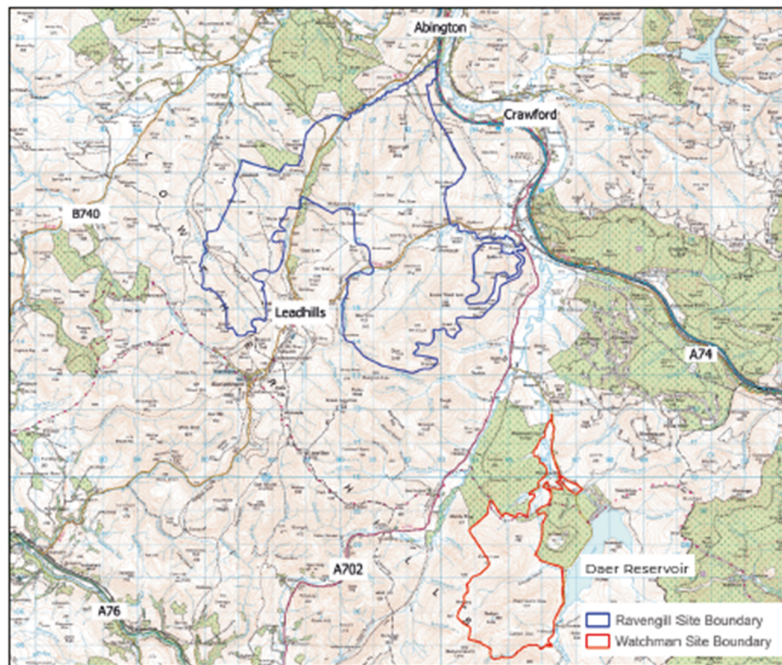


## Appendix 8: Event 2 Resident Flyer



### WATCHMAN ENERGY PARK PUBLIC CONSULTATION EVENT RAVENGILL ENERGY PARK PUBLIC CONSULTATION EVENTS



#### **Watchman Energy Park:**

12th May | 3pm - 7pm | Crawford Hall (100 Carlisle Rd, Crawford, ML12 6TW)

#### **Ravengill Energy Park:**

20th May | 3pm - 7pm | Leadhills Hall (35 Ramsay Rd, Leadhills, ML12 6YA)  
21st May | 3pm - 7pm | Crawfordjohn Hall (Manse Rd, Crawfordjohn, ML12 6SR)

Renewco Power Ltd is holding three consultation events: to provide an update on the proposed Watchman Energy Park, and to introduce proposals for the Ravengill Energy Park. Members of the public are encouraged to attend the events to find out more, ask questions of the project team and provide feedback.

For those unable to attend, the exhibition materials and a link to provide feedback will be available on the project websites (overleaf) from **12th May** for Watchman and **20th May** for Ravengill. Feedback for both projects will be welcomed until **11th June**.

## Watchman Energy Park

The site for the proposed Watchman Energy Park is located approximately 7km south of Elvanfoot, and 10km south of Crawford. The proposals include up to 13 wind turbines (approximately 91MW), and a 50MW BESS - enough to power over 110,259 homes. An initial consultation event was held in December 2024, with updates since then including: a reduction in the maximum number of turbines from 16 to 13; the development of options for access from the public

road, internal tracks, substation and BESS; and the development of initial options for biodiversity enhancement.

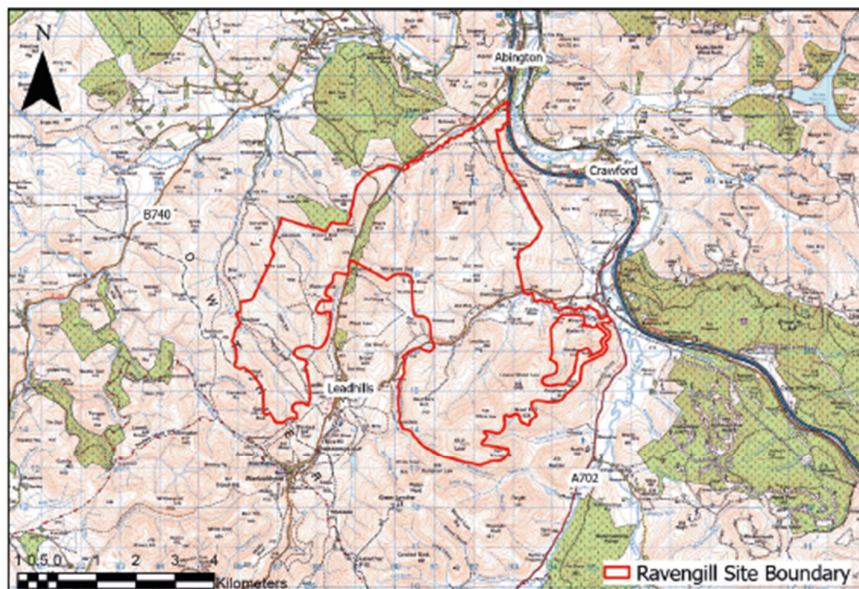
The event on **12th May** will provide an opportunity for anyone with an interest to view the updated proposals, ask questions, and provide further feedback ahead of an application being submitted later this year. Further feedback will also be sought from the community on priorities for community benefit funding.



## Ravengill Energy Park

The site for the proposed Ravengill Energy Park sits north and east of the village of Leadhills. The development would include up to 32 wind turbines and a battery energy storage system (BESS). Based on the current layout it is anticipated that the development will have a total installed capacity of approximately 224MW wind and 50MW BESS, and would generate enough renewable energy to power up to 271,406 homes.

The consultation events on **20th** and **21st May** will provide an opportunity for members of the local community to be introduced to the proposals, ask questions, and provide valuable feedback. Feedback will also be sought on local priorities for the associated community benefit fund. A second round of consultation will be held later in the year ahead of submission of a Section 36 application for consent to the Scottish Government in 2026.



### The M74 Corridor Strategy


Both Ravengill and Watchman, along with M74 West, form part of Renewco Power's strategy to deliver new renewable energy assets in the vicinity of the M74 motorway. We consider that there are several strategic advantages to development in this area, including:


- access to the 400kV ZV overhead line;
- proximity to the motorway network for delivery of components to the sites;
- consistently high wind speeds;
- and a large-scale landscape which can accommodate modern wind turbines.


By bringing forward a cluster of developments, strategic social and economic benefits can be delivered for local communities including through community benefit funds potentially worth over £2 million per annum. The cluster will also deliver biodiversity enhancements across the area.

### Contact details


#### Watchman


 <https://www.renewcopower.com/portfolio/united-kingdom/uk-projects/watchman-energy-park/>

 0800 066 8943

 [watchman@renewcopower.com](mailto:watchman@renewcopower.com)

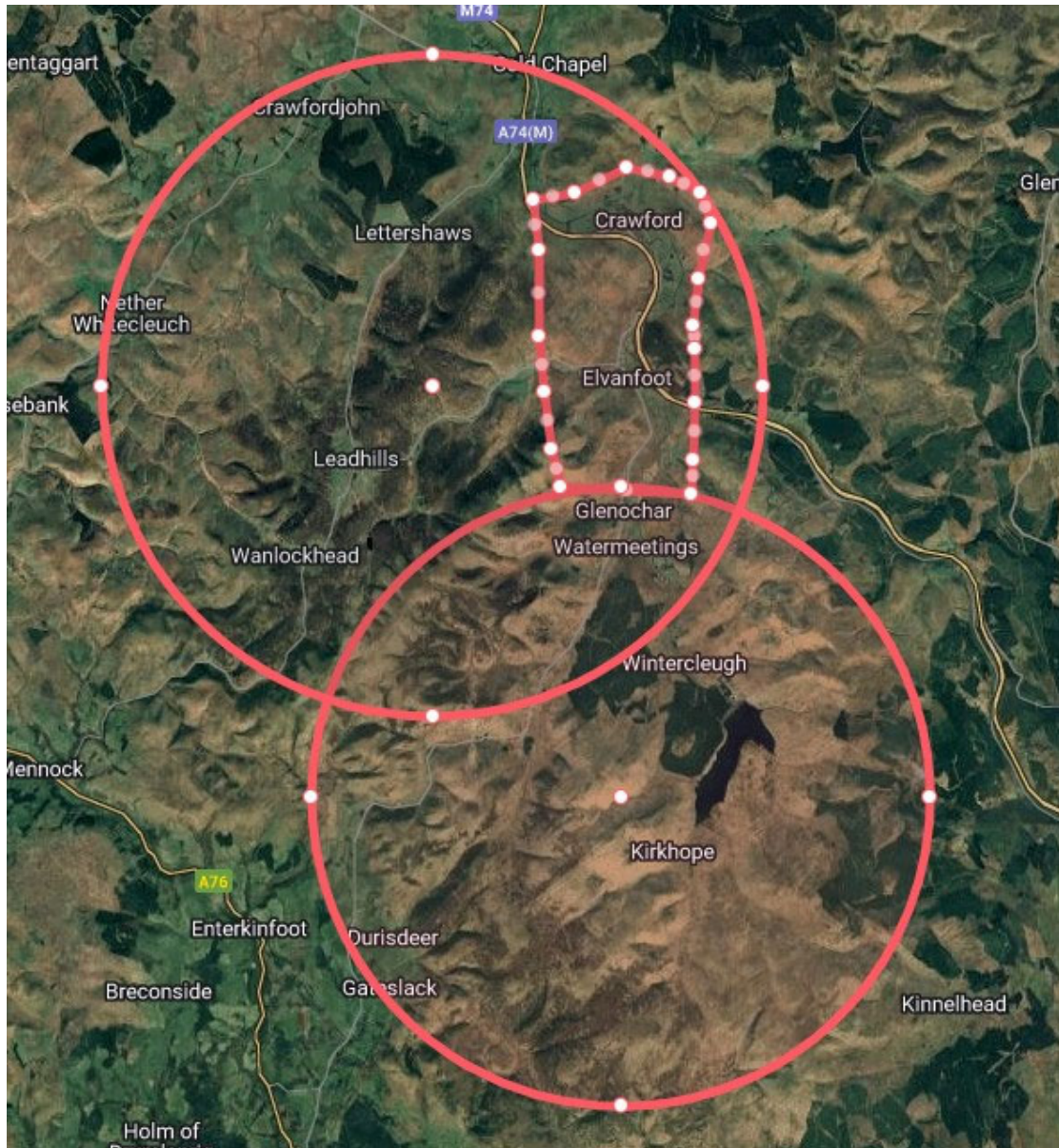
#### Ravengill

 <https://www.renewcopower.com/portfolio/united-kingdom/uk-projects/ravengill-energy-park/>

 0800 066 8943

 [ravengill@renewcopower.com](mailto:ravengill@renewcopower.com)

## Appendix 9: Second Event Mailout Radius



## Appendix 10: Second Event Public Notices

### GENERAL NOTICES

#### WATCHMAN ENERGY PARK

#### SECOND PUBLIC CONSULTATION EVENT

Watchman Energy Park Limited, a wholly owned subsidiary of Renewco Power Limited, is exploring the opportunity of developing a renewable energy park on land approximately 7km south of Elvanfoot. The project team invite members of the public to attend a second consultation event where there will be an opportunity to view and comment on the updated proposals:

**12<sup>th</sup> May 2025, 15:00 – 19:00, Crawford Hall  
(100 Carlisle Road, Crawford, ML12 6TW)**

The event will provide an opportunity to view the updated proposals, as well as information on surveys which have been undertaken and the community benefit funding which will be delivered as part of the proposals. Members of the project team will be in attendance to answer any questions and receive feedback.

Renewco Power is committed to open discussion surrounding the proposals, and would encourage feedback and suggestions that could help shape the Watchman development. Feedback can be provided at the event or on the project website from the same date at <https://www.renewcopower.com/portfolio/united-kingdom/uk-projects/watchman-energy-park/>. Please note, all feedback should be returned by 11<sup>th</sup> June 2025.

**For further information, please contact the project team via email at [watchman@renewcopower.com](mailto:watchman@renewcopower.com) or in writing to c/o Cavendish Consulting, 220 St Vincent Street, Glasgow, G2 5SG.**

CARLUKE AND LANARK GAZETTE, 30<sup>TH</sup> APRIL 2025

## Statutory

### **WATCHMAN ENERGY PARK SECOND PUBLIC CONSULTATION EVENT**

Watchman Energy Park Limited, a wholly owned subsidiary of Renewco Power Limited, is exploring the opportunity of developing a renewable energy park on land approximately 7km south of Elvanfoot. The project team invite members of the public to attend a second consultation event where there will be an opportunity to view and comment on the updated proposals:

**12th May 2025, 15:00 - 19:00, Crawford Hall  
(100 Carlisle Road, Crawford, ML12 6TW)**


The event will provide an opportunity to view the updated proposals, as well as information on surveys which have been undertaken and the community benefit funding which will be delivered as part of the proposals. Members of the project team will be in attendance to answer any questions and receive feedback.

Renewco Power is committed to open discussion surrounding the proposals, and would encourage feedback and suggestions that could help shape the Watchman development. Feedback can be provided at the event or on the project website from the same date at <https://www.renewcopower.com/portfolio/united-kingdom/uk-projects/watchman-energy-park/>. Please note, all feedback should be returned by 11th June 2025.

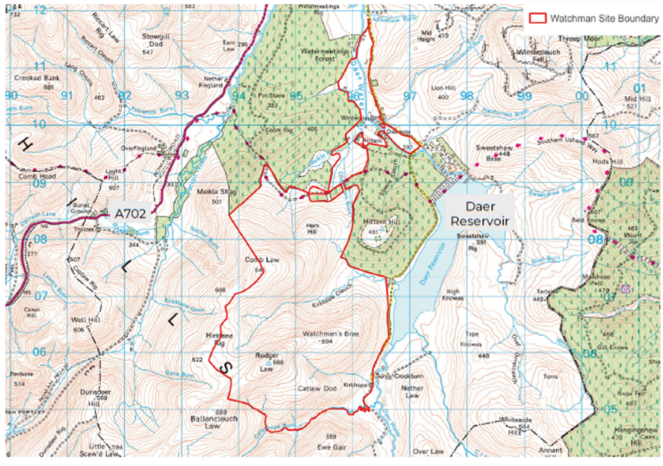
For further information, please contact the project team via email at [watchman@renewcopower.com](mailto:watchman@renewcopower.com) or in writing to c/o Cavendish Consulting, 220 St Vincent Street, Glasgow, G2 5SG.

LANARK AND CARLUKE ADVERTISER, 1<sup>ST</sup> MAY 2025

# Appendix 11: Second Event Poster



## Watchman Energy Park Public Consultation Event



**12th May, 3pm - 7pm**  
**Crawford Village Hall**  
**100 Carlisle Road, Crawford, ML12 6TW**

As part of the pre-application consultation process, Renewco Power are hosting a second public consultation event regarding the proposed Watchman Energy Park located 7km south of Elvanfoot. The event will provide an opportunity for members of the public to view the updated proposals and provide their feedback.

Those unable to attend the event can leave their feedback via the project website linked below from 12th May. Please note, all feedback is due by 11th June.

**Contact Us**

Should you have any questions or require any further information regarding the proposals please contact the team on **0800 066 8943** or [watchman@renewcopower.com](mailto:watchman@renewcopower.com)

To find out more please scan the QR code or visit <https://www.renewcopower.com/portfolio/united-kingdom/uk-projects/watchman-energy-park/>

