

**Legend**

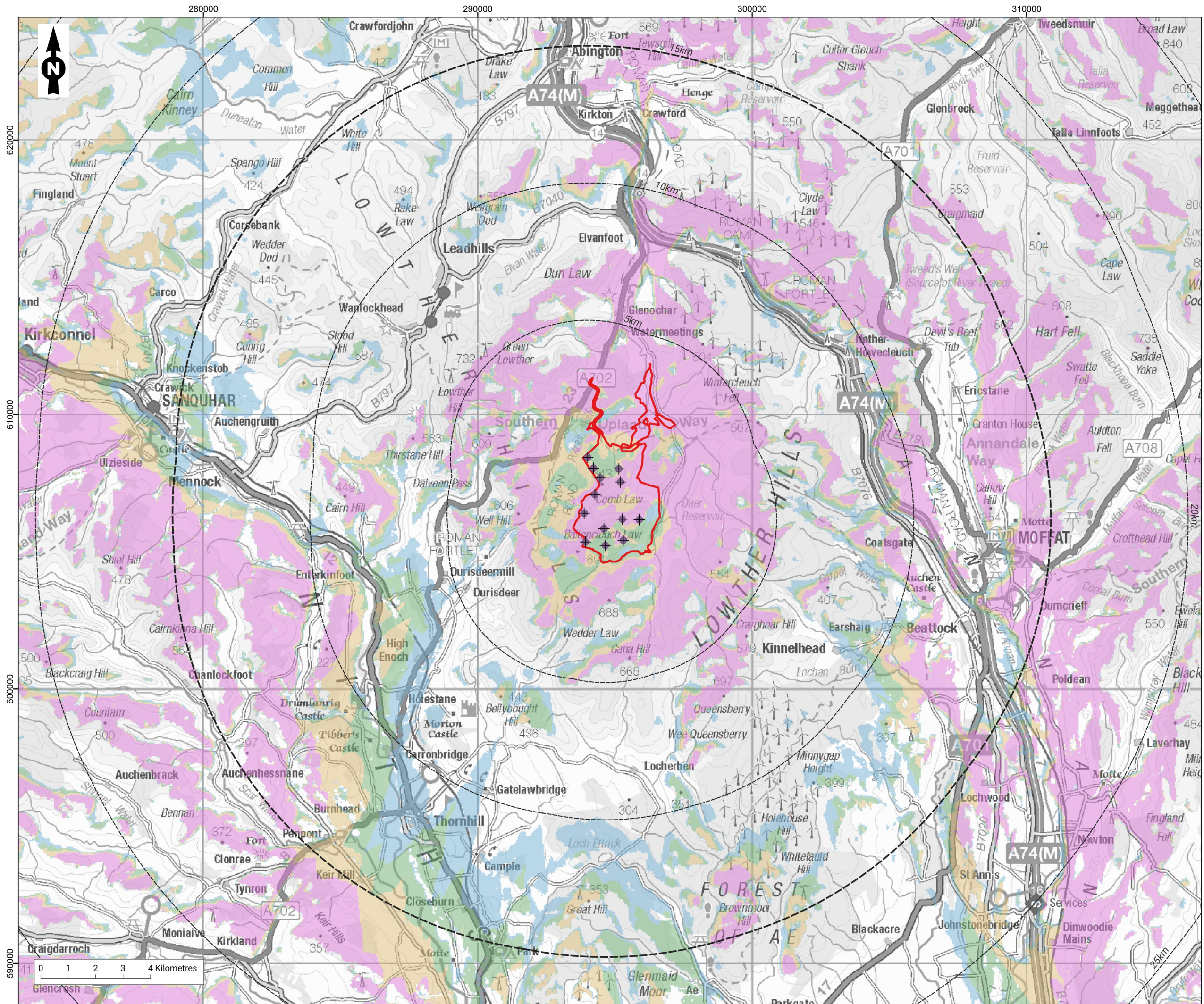
- Turbine locations
- Distance to turbines (5km intervals)
- Site boundary

**Zone of Theoretical Visibility**

- 1 - 3 hubs visible
- 4 - 6 hubs visible
- 7 - 9 hubs visible
- 10 - 13 hubs visible

Notes: The ZTV is calculated to turbine hub heights of up to 155m, from a height of 2m above ground level. The terrain model is bare ground derived from OS Terrain 50 height data. Earth curvature and atmospheric refraction have been taken into account.

<b>Figure Title</b> Zone of Theoretical Visibility of Turbine Hub Height to 45 km		
<b>Project Name</b> Watchman Energy Park		
<b>Project No.</b> 24014		
<b>Date</b> October 2025	<b>Figure No.</b> 4.3	<b>Revision</b> r1
<b>Prepared By</b> AS	<b>Scale</b> 1:340,000 @ A3	
<b>Client</b> Watchman Energy Park Ltd		



**Legend**

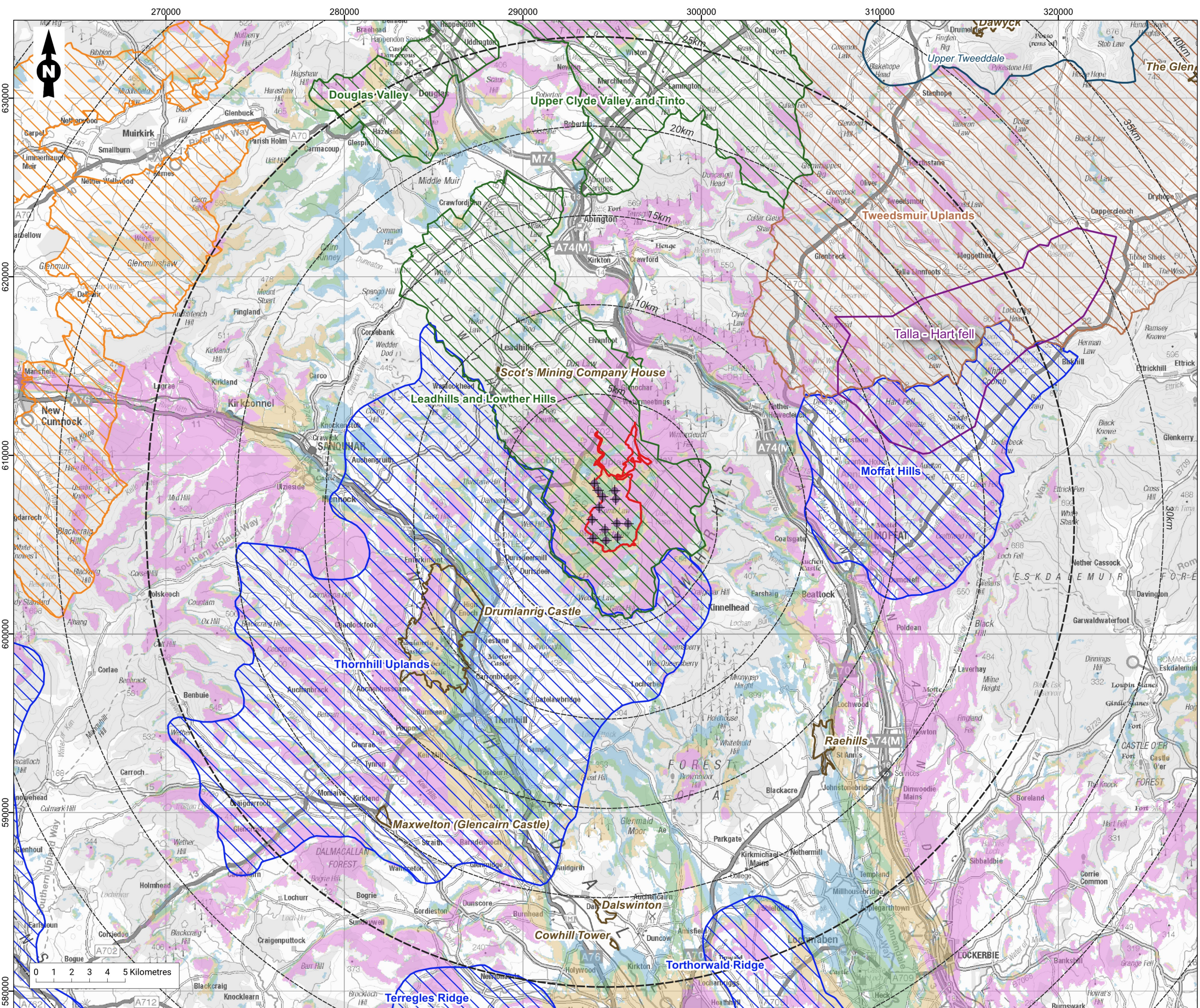
- Turbine locations
- Distance to turbines (5km intervals)
- Site boundary

**Zone of Theoretical Visibility**

- 1 - 3 turbines visible
- 4 - 6 turbines visible
- 7 - 9 turbines visible
- 10 - 13 turbines visible

Notes: The ZTV is calculated to turbine tip heights of up to 240m, from a height of 2m above ground level. The terrain model is bare ground derived from OS Terrain 50 height data. Earth curvature and atmospheric refraction have been taken into account.

Figure Title		
<b>Zone of Theoretical Visibility to 15 km</b>		
Project Name		
<b>Watchman Energy Park</b>		
Project No.		
24014		
Date	Figure No.	Revision
October 2025	4.4	r1
Prepared By	Scale	
AS	1:130,000 @ A3	
Client		
<b>Watchman Energy Park Ltd</b>		



### Legend

- Turbine locations
- Distance to turbines (5km intervals)
- Site boundary

#### Zone of Theoretical Visibility

- 1 - 3 turbines visible
- 4 - 6 turbines visible
- 7 - 9 turbines visible
- 10 - 13 turbines visible

#### National Scenic Area

- National Scenic Area

#### Gardens & Designed Landscapes

- Gardens & Designed Landscapes

#### Wild Land

- Wild Land

#### Local Landscape Designations

- Special Landscape Area, South Lanarkshire
- Special Landscape Area, Scottish Borders
- Regional Scenic Areas, Dumfries & Galloway
- Sensitive Landscape Area, East Ayrshire

Notes: The ZTV is calculated to turbine tip heights of up to 240m, from a height of 2m above ground level. The terrain model is bare ground derived from OS Terrain 50 height data. Earth curvature and atmospheric refraction have been taken into account.

**Figure Title**  
**Designated Landscapes**

**Project Name**  
**Watchman Energy Park**

**Project No.**  
**24014**

<b>Date</b> February 2026	<b>Figure No.</b> 4.5	<b>Revision</b> r3
<b>Prepared By</b> AS	<b>Scale</b> 1:200,000 @ A3	

**Client**  
**Watchman Energy Park Ltd**