


Appendix 12: Second Event Feedback Form



FEEDBACK FORM

PRIVACY STATEMENT

By filling-in this form you are agreeing that Cavendish Consulting Limited ("Cavendish") can hold and process your Personal Data in relation to this public consultation exercise.

- Cavendish will share your Personal Data with the project team companies for planning evaluation purposes only.
- Your Personal Data will not be used for any other purposes without your consent.

Cavendish and the project team will use your Personal Data to:

- Send you updates about the project (where you provide us with your contact details); and
- Develop a Pre-Application Consultation Report (or similar document) about this public consultation that will be submitted to the planning authority or similar body; this will be a publicly available document. Your comments will be anonymous and we will only identify you in these reports with your consent.

If you provide us with your contact details, we may also contact you for more details regarding the comments you have made.

Cavendish acts on behalf of the project team to run public consultation activities.

YOUR DETAILS

Title (Miss/Mrs/Ms/Mr/Other):

First Name or Initial:

Surname:

Postcode:

Age Group (please circle):
Under 13 13-17 18-24 25-34 35-44
45-54 55-64 65-74 75-84 85+

YOUR CONTACT DETAILS

Address:

Telephone:

Email:

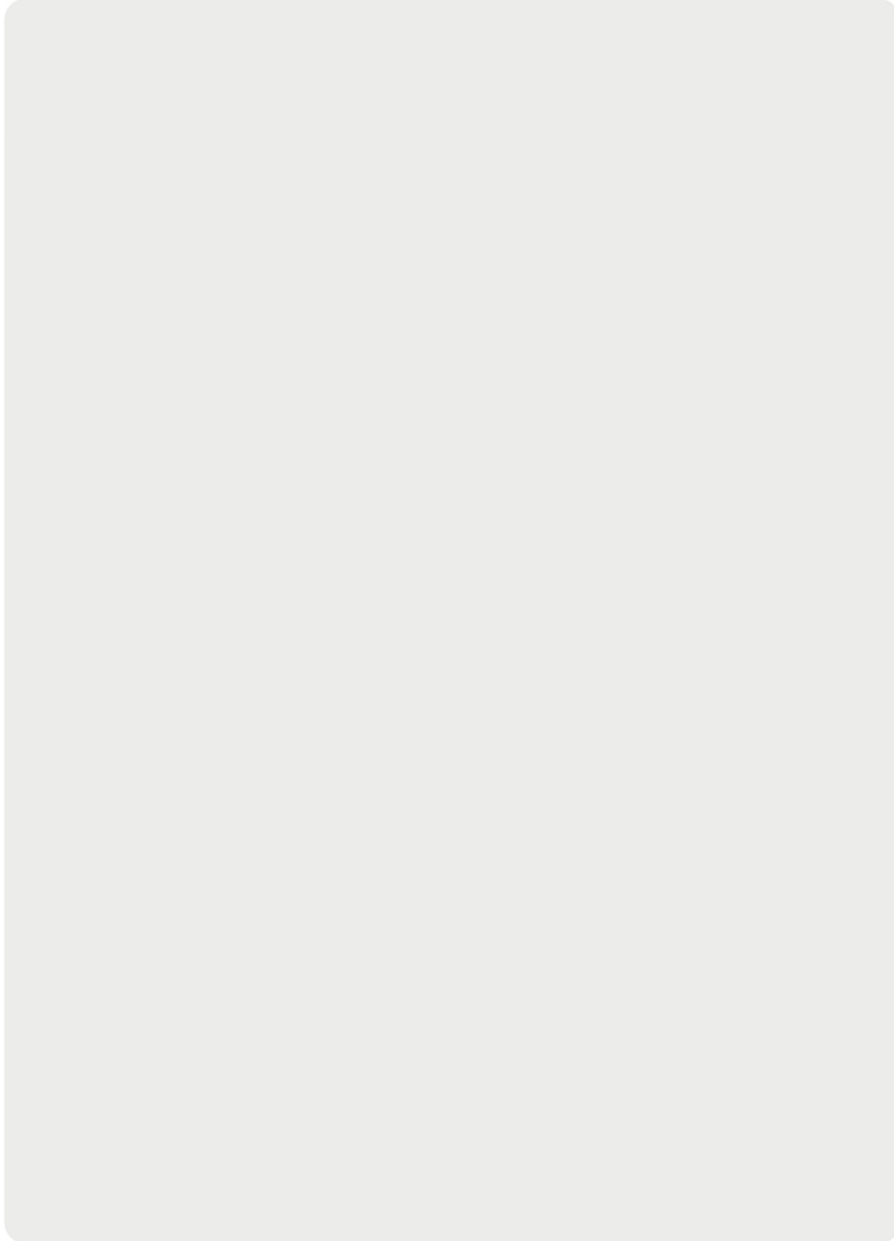
I do not wish to provide personal details but can confirm that I am over the age of 13

We will use these details to contact you and update you on the proposals. If you would like to be kept up to date with these proposals, please tick this box

Data Protection

We process all Personal Data in accordance with the UK General Data Protection Regulation, the EU General Data Protection Regulation 2016/679 (together the "GDPR") and the Data Protection Act 2018. Your Personal Data will not be transferred outside the UK or European Economic Area (the EU member states plus Norway, Iceland and Liechtenstein). To see our full Privacy Notice and find out how to exercise your data subject rights, please visit cavendishconsulting.com/dp or by contact us by phone on 01962 893 893, or email at dataprotection@cavendishconsulting.com.

**WE WELCOME YOUR FEEDBACK, PLEASE PROVIDE
YOUR COMMENTS ON THE PROPOSALS OVERALL:**



COMMUNITY BENEFIT QUESTIONNAIRE

The below questions relate to the community benefit banner presented at the community engagement event on the 12th of May 2025 and available on the Watchman web page (<https://www.renewcopower.com/portfolio/united-kingdom/uk-projects/watchman-energy-park/>). Please take the time to review the banner before answering the questions.

As part of the consultation on community benefits for the Watchman Energy Park, a Small Grants Fund of £5,000 has been launched. Applications can be made for up to £500 towards projects and initiatives in the Crawford and Elvanfoot community council area via the project AssetFace page <https://assetface.com/?a=watchmanenergypark>.

1. We have identified some potential benefits that could be delivered as part of the future Community Benefit Fund we would like your view on. How would you rate the following benefits?
(1 – poor to 5 - excellent)

- a) The installation of solar PV/thermal and battery storage in homes
- b) New electric vehicle charging infrastructure in your community
- c) Electric vehicle car club scheme
- d) Scholarship scheme
- e) Business grant scheme

2. Are there any other projects or activities that should benefit from the future Watchman Community Benefit Fund?

3. What organisation(s) should manage the distribution of community benefit funds?

- a) Local authority
- b) A community body, either existing or setup for the purpose
- c) The developer
- d) A third-party specialist organisation e.g. Foundation Scotland
- e) Other (please specify)

4. What are the most important factors that should be taken into account when deciding which communities can access Watchman community benefit funding (please rank from 1 - least important to 7 - most important)?

- a) Proximity to proposed site
- b) Visibility of Watchman Energy Park
- c) School catchment areas
- d) Housing market areas
- e) The funding should be available to the whole of South Lanarkshire
- f) The funding should be available to areas in Dumfries and Galloway
- g) Other (please specify):

5. Renewco Power is keen to work with local suppliers as part of the development of Watchman. Please tell us about any potential suppliers that we should be made aware of.

THANK YOU FOR TAKING THE TIME TODAY AND COMPLETING THE FORM

If you would like more time to consider the questions, please print off a copy of the form and return it by 11th June 2025 to:

C/O Cavendish Consulting,
220 St Vincent Street,
Glasgow,
G2 5SG

Email: watchman@renewcopower.com

Further information on the proposals can also be obtained by contacting Cavendish Consulting at the address above or by telephone on 0800 066 8943.

This feedback form along with more information regarding the project can be found at:
<https://www.renewcopower.com/portfolio/united-kingdom/uk-projects/watchman-energy-park/>



Appendix 13: Second Event Boards



Renewco
POWER

WATCHMAN ENERGY PARK

Welcome to the second public consultation event for the Watchman Energy Park ('the Proposed Development').

The purpose of today's event is to provide you with information about the Proposed Development, including updates following our last consultation event in December 2024, and gather feedback. Representatives from Renewco Power, supported by our Environmental Impact Assessment (EIA) team from Ramboll and landscape and visual impact specialists MVGLA, are available to discuss the project and answer your questions.

The contents of the remaining information banners are summarised below:

- Banner 2: The Development Site (overview of the site and project)
- Banner 3: Project Development (how the project has developed since our last event)
- Banner 4: Substation, Battery Energy Storage and Site Compound (overview of substation, battery and main construction compound)
- Banner 5: Biodiversity Enhancement
(outline proposals for the enhancement of biodiversity)
- Banner 6: Working with the Community (our approach to community benefits)
- Banner 7: Project Timeline
- Banner 8: Feedback and Next Steps (how to provide feedback and next steps in project progress)
- Banner 9: Who is Watchman Energy Park Limited? (overview of the developer of the Proposed Development)
- Banner 10: Our M74 Corridor Strategy (Renewco Power's plans for development in the vicinity of the M74)

Scan QR code to access
the project website



renewcopower.com



THE DEVELOPMENT SITE

LOCATION

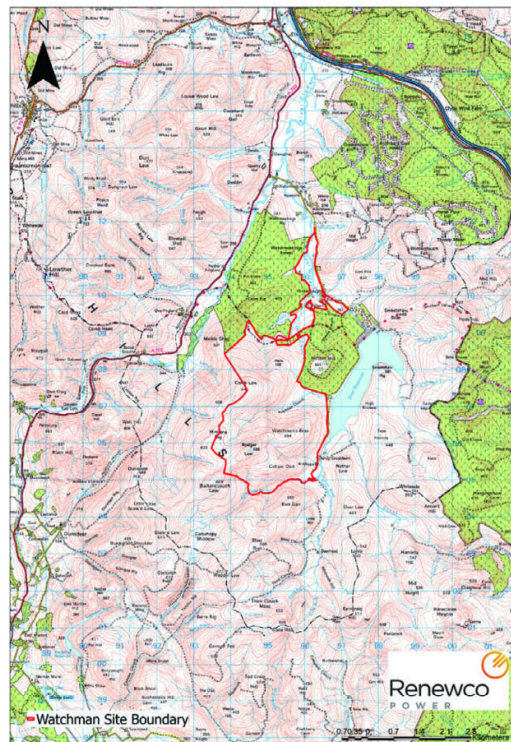
The 'Site' covers an area of approximately 1070 hectares (ha). The Site is located approximately 7 km south of Elvanfoot and 10 km south of Crawford, between the valley of the Daer Water to the north, Daer Reservoir and commercial forestry to the east, open moorland of the Southern Uplands to the south, and further open moorland and commercial forestry with the A702 road beyond to the west. The Site is within the administrative boundary of South Lanarkshire Council.

THE PROJECT

The updated proposals for the Watchman Energy Park include:

- up to 13 wind turbines, with a height of up to 240 m to tip
- Battery Energy Storage System (BESS), with a capacity of approximately 50 MW
- onsite substation co-located with the BESS
- internal access tracks
- construction compound and borrow pit search areas
- options for vehicular access for component deliveries and general construction traffic from the public road network

The project has a contracted grid connection to the Elvanfoot Substation, located approximately 9km north of the turbine array of the project. The grid connection to Elvanfoot Substation will be subject to a separate consent application by Scottish Power Energy Networks (SPEN).



Scan QR code to access the project website



renewcowerpower.com



Renewco
POWER

PROJECT DEVELOPMENT





Renewco
POWER

PROJECT DEVELOPMENT

Since our first exhibition in December, there has been significant progress on the design of the project. The main areas of development and change are:

- reduction in the number of turbines from 16 to 13 in response to environmental and technical constraints
- identification of options for access from the public road
- initial layout of internal access tracks and other supporting infrastructure (e.g. borrow pit search areas and construction compound location)
- site selection and layout of the substation and BESS
- outline proposals for biodiversity mitigation and enhancement which will be delivered as part of the Outline Biodiversity Enhancement and Management Plan (OBEMP)

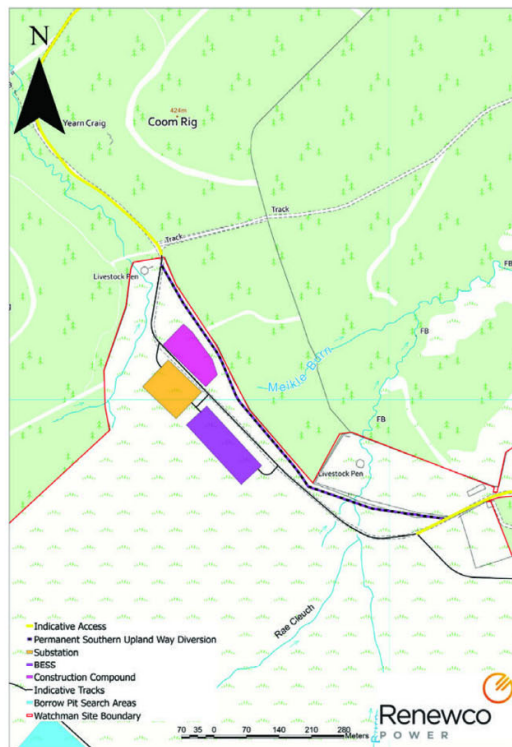


renewcower.com



Renewco
POWER

SUBSTATION, BATTERY ENERGY STORAGE & CONSTRUCTION COMPOUND



The on-site substation and BESS is proposed to be located in the north-western corner of the site, immediately south of the Southern Upland Way (SUW). This location has been chosen due to a combination of the relatively shallow slope, proximity to the grid connection at Elvanfoot and lack of environmental constraints.

The current proposal is to divert a short stretch (approx. 900 m) of the SUW within the site. This will ensure pedestrian safety during construction and creates an opportunity to provide screen planting around the substation and BESS compound to minimise its visual impact.

renewcower.com



Renewco
POWER

BIODIVERSITY ENHANCEMENT & MANAGEMENT

An Outline Biodiversity Enhancement Management Plan is being prepared which will include a number of measures that will mitigate for habitat loss and ensure that the proposed development has an overall positive impact on biodiversity across the site. Draft measures under consideration at this stage include:

- works to improve peatland/moorland habitats, such as:
 - drain blocking
 - peat bank and gully reprofiling;
 - stock management; and
 - prohibition of certain activities within the peatland (e.g. peat cutting, planting, supplementary livestock feeding, drainage).
- woodland planting, including around the substation/BESS site, along commercial forestry edges and riparian planting along the Meikle Burn and Daer Water
- rewilding borrow pits
- wild flower planting
- habitat management to support breeding waders

The current 'work in progress' map showing where these measures are being considered is available to review as a print out. Please speak to one of the Project Team if you would like to be directed to it.

renewcower.com



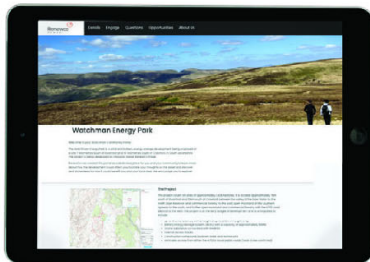
Renewco POWER

WORKING WITH THE COMMUNITY

The Proposed Development will provide a range of benefits for the local community, including a fund which will deliver direct investment into community projects and initiatives. The fund will reflect Scottish Government best practice guidance. For example, should the wind aspect of the development have an installed capacity of 91 MW, the Proposed Development would provide a minimum of £455,000 annually in community benefits. To guide this investment to the most appropriate projects and initiatives, seven high-level investment priorities have been identified:

- education and skills;
- health and wellbeing;
- economy and jobs;
- environment;
- culture and heritage;
- facilities and amenities; and
- transport

In advance of the Proposed Development being delivered, a Small Grants Fund of £5,000 has been launched to help support local initiatives and test a new engagement platform, Assetface. The Assetface platform has been developed by software developers BizGive, and will allow you provide feedback on the investment priorities and submit your ideas on the kinds of projects and initiatives that would benefit the local community. You can also highlight businesses that could benefit from expenditure associated with delivering Watchman Energy Park.



Scan QR code to access
the Asset Face

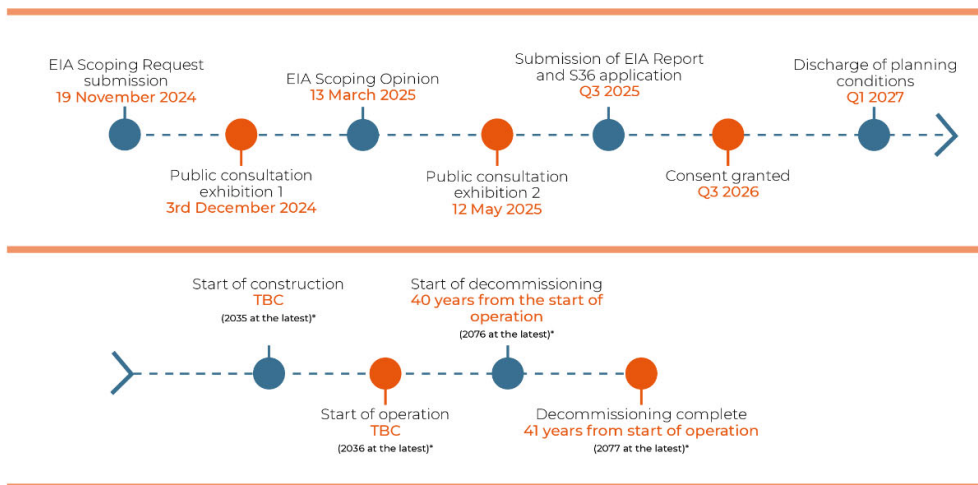


renewcowerpower.com



PROJECT TIMELINE

Watchman Energy Park will have a generating capacity of >50 MW and so will require consent under Section 36 of the Electricity Act 1989. This consenting process is administered by Scottish Ministers through the Energy Consents Unit (ECU) of the Scottish Government. The project requires an Environmental Impact Assessment (EIA), and this process will strongly influence the ongoing design work. The EIA process will result in an EIA Report which will document the findings of the assessments completed, provide environmental information for the project, and form a key element of the Section 36 consent application.



* Under ongoing reforms to how entry of new connections to the national grid is managed, it is expected that the Watchman Project will be able to connect to the grid earlier than the 2036 date currently contracted.

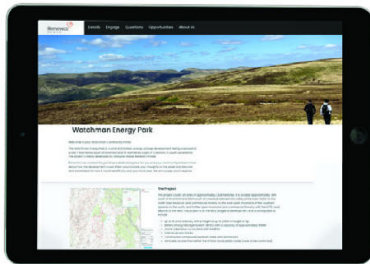


Renewco
POWER

FEEDBACK & NEXT STEPS

YOUR FEEDBACK

To help us take your views into account in the development of the Watchman Energy Park, including the community benefit package, we would appreciate if you could provide feedback via our AssetFace site. You can also use the AssetFace platform to apply for funding for local initiatives from the Watchman Small Grants Fund.



Scan QR code to access
the Asset Face



Alternatively, we have feedback forms available for you to complete and hand to a member of the project team.

We would appreciate if you could provide feedback by 11 June 2025.

NEXT STEPS

Our response to your feedback will be set out in a Pre-Application Consultation Report which will accompany a Section 36 Application submitted later this year. We will also look to engage directly with community bodies on the lead up to the application submission.

CONTACT US AT:

watchman@renewcopower.com
www.renewcopower.com

renewcopower.com



Renewco
POWER

WHO IS WATCHMAN ENERGY PARK LTD?

Watchman Energy Park Ltd is a wholly owned subsidiary of Renewco Power Ltd. Renewco Power is a Glasgow-headquartered renewable energy developer dedicated to developing onshore wind, solar Photovoltaic (PV), Battery Energy Storage Systems (BESS) and green hydrogen projects across Europe and the US. With over 50 employees, Renewco's mission is to accelerate the deployment of clean energy by delivering 5 GW of construction ready projects across Europe and the US by 2030. The company was formed by a highly experienced team of entrepreneurs and renewable sector specialists with significant development, technical, project structuring, construction, and financing expertise across all renewable technologies.

While Renewco Power is a relatively new company, our team has a proven track record, delivering renewable energy projects in the UK and beyond. Our experience includes wind, solar, BESS, and emerging technologies such as green hydrogen.

*Our aim with **all** of our projects is to maximise the renewable potential deliverable on a site while minimising impacts to land and the surrounding community. Irrespective of the technology our relationships with the community are critical to ensure we make a lasting positive impact, which is why we would welcome any and all feedback as part of this consultation.*

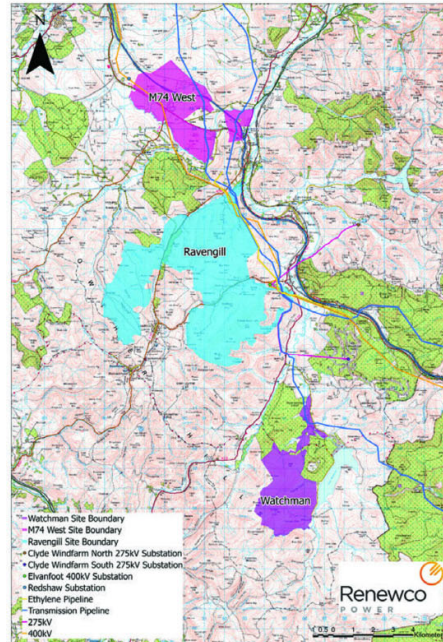


renewcower.com



Renewco
POWER

OUR M74 CORRIDOR STRATEGY



Watchman Energy Park forms part of Renewco's wider strategy to deliver new renewable energy assets in the vicinity of the M74 motorway. We consider that there are several strategic advantages to development in this area, including:

- access to the 400 kV ZV Overhead Line;
- proximity to the motorway network for the delivery of components to site and access to labour;
- consistently high wind speeds which will enable the export of large amounts of renewable energy to the grid;
- low population density which means that impacts on the amenity of householders, through issues such as noise and visual impacts, can be minimised;
- the large scale character of the landscape which is generally suitable to accommodate large modern, commercial wind turbines;
- the projects will create a cluster of developments in the area along the M74 corridor, considered to be an appropriate location, which allows the most sensitive landscapes and habitats elsewhere to be protected whilst facilitating the pooling of investment to provide strategic benefits for local communities;
- developments in this area will help deliver Scottish and UK Government targets for renewable energy and reducing carbon emissions, with Watchman Energy Park expected to produce enough energy to power the equivalent of approximately 110,259 homes.

renewcowerpower.com

Appendix 14: CLG

Appendix 14.1: Terms of Reference



Terms of Reference (ToR)

Renewco Power Community Liaison Group (CLG)

Purpose of the Community Liaison Group

The Renewco Power Community Liaison Group (CLG) has been established to create a forum for open, respectful, and constructive dialogue between Renewco Power and local communities, in relation to proposed renewable energy projects. The CLG will facilitate ongoing communication, allowing community members and stakeholders to raise questions, provide feedback, and share local knowledge that may inform project development. The local community is defined as those living or working in the vicinity of, or in areas likely to be affected by, renewable energy projects proposed by Renewco Power.

Objectives of the CLG

The CLG will serve the following key objectives:

- To create and maintain clear and open communication between representatives from Renewco Power and the local community.
- To provide regular updates on the progress of Renewco Power's renewable energy proposals.
- To consider any issues arising from the planned development of renewable energy proposals by Renewco Power.
- To enhance community understanding of Renewco Power's ongoing renewable energy initiatives and associated development process.

CLG Membership

The CLG will consist of representatives from relevant community councils, and other key stakeholder groups, alongside representatives from Renewco Power. Membership will initially be determined based on local representation from the project areas, with a focus on inclusivity and ensuring diverse community voices are heard.

Membership may include:

- Representatives from local community councils within the affected areas.
- Representatives from relevant community organisations or residents' groups.
- Project representatives from Renewco Power.

Proxy members may attend meetings if primary members are unavailable, with notification given to Renewco Power no later than three working days in advance of the scheduled meeting. Membership may be reviewed and adjusted as project proposals progress, with any changes to be agreed upon by the CLG members.

Meetings

- The date, time and venue for the next meeting will be agreed at each CLG meeting.
- Meetings will be held in-person with the option to join via an online platform. The date, time, and venue confirmed at the end of each meeting.
- The frequency of the meetings shall be decided between the CLG and Renewco Power but will not be more than two monthly.
- The meetings will not be open to members of the public.

Standing agenda:

- Attendance / apologies
- Approval of minutes from previous meeting
- Project updates
- Community updates
 - Representatives to give any relevant community updates
- Q & A
 - Questions must relate to matters discussed during meeting, or have been submitted a minimum of 7 days in advance.
- Matters for discussion at next meeting
- Agreement on date of next meeting

Commitments by Renewco Power

Renewco Power commits to:

- Draft and circulate meeting minutes within five working days after each CLG meeting.
- Issue draft meeting agendas at least five working days before the meeting, with the agenda to be finalised three working days before the meeting.
- Share information and technical details with CLG members to ensure transparent communication.
- Provide logistical support for meetings, including venue hire, online meeting platforms, and relevant documentation.
- Facilitate guest speakers or technical experts to address specific concerns raised by the community.
- Provide timely updates on project development and the planning process.

CLG Member Commitments

CLG members agree to:

- Participate constructively in discussions and share relevant feedback from their communities.
- Disseminate information from CLG meetings back to their local groups and communities.
- Review and provide input on meeting minutes within five working days of receipt.
- Suggest relevant topics or concerns for inclusion in meeting agendas at least 5 working days in advance of the next scheduled meeting.

Chairperson

Renewco Power will chair the CLG meetings, ensuring the orderly conduct of discussions, adherence to the agreed agenda, and enforcement of the Terms of Reference. In the event that the designated Chairperson from Renewco Power is unavailable, a temporary Chairperson will be appointed by Renewco Power for that meeting.

Minutes and Documentation

- Meeting minutes will be recorded by Renewco Power and circulated to all CLG members within five working days. Members will have an additional five working days to review and approve the minutes, after which they will be finalised and made available.
- Approved minutes and relevant documentation will be shared with CLG members via email and published on a dedicated project website for public access.

Amendments to the Terms of Reference

These Terms of Reference may be reviewed and amended by the CLG as necessary. Any changes must be approved by a majority vote of the CLG members.

Dissolution of the CLG

The CLG may be dissolved at any time by majority agreement of the members, or upon the completion of Renewco Power's renewable energy projects in the area.

Appendix 14.2: CLG Meeting 1 Minutes



Renewco Power M74 Community Liaison Group – Meeting 1

Date: 24th April 2025

Location: The Old School House, Abington

Attendees:

- Mick Barker- Moffat Community Council (MB)
- David Booth- Moffat Community Council (DB)
- Robert McCafferty - Wanlockhead Community Council (RM)
- Karen Morrison - Wanlockhead Community Council (KM)
- David McLachie - Muirkirk Community Council (DM)
- Gerard Godfrey - Leadhills Community Council (GG)
- Steve Johnston - Leadhills Community Council (SJ)
- Jeremy Cooper - Crawford and Elvanfoot (JC)
- Elizabeth Shelby - Thornhill Community Council (ES)
- Richard Koiak - Renewco Power (RK)
- Maeve Fryday - Renewco Power (MF)
- Nick Lopez - Renewco Power (NL)
- Aneesa Miller - Cavendish Consulting (AM)
- Daisy Geissler - Cavendish Consulting (DG)

Agenda:

- Attendance / apologies
- Terms of Reference
- Project updates
- Community updates
 - Representatives to give any relevant community updates
- Q & A
 - Questions must relate to matters discussed during meeting, or have been submitted no later than 12pm on Tuesday 22nd April.
- Matters for discussion at next meeting
- Agreement on date of next meeting

Terms of Reference (ToR)

- **RK:** Emphasised that the forum is not intended to replace existing community events or project updates. It aims to provide additional information, foster transparency, and offer accountability. The CLG can be used to answer questions and explain elements of Renewco's projects, and may also serve as a forum for further information exchange around the changing situation with renewables etc.
- **SJ:** Requested that Leadhills' comments be read out; criticised timing of ToR circulation during Easter holidays.
- **RK:** The ToR is to help Renewco be held to account. It is a living document meant to evolve. Pre-submitted questions allow for more accurate responses.
 - [Read out SJ's email]

- **GG:** Reflected on the Harryburn CLG which was specific to one development. Emphasised that it was independently chaired and minuted and was useful for both parties. There was a degree of trust and intimacy due to it being a small group. Leadhills made clear that the community were against the development, but discussed community benefit funding (CBF) to ensure that should consent be granted, the community would benefit as best it could.
 - **RK:** Confirmed that Renewco are keen to talk about CBF, and emphasised that they are trying to be fair and equal through the creation of the CLG. A decision was taken to invite all those areas who host infrastructure and those who neighbour them to encourage a constructive forum. Harryburn CLG was convened in circa 2016 so things have moved on significantly since then in terms of consultation. The CLG is designed to be an open and transparent model, hopefully retaining the warmth of the Harryburn group.
 - **AM:** The CLG is designed to be a way for communities to gain information on the respective schemes which can then be disseminated to the community. Clarified ToR is in draft form and open to revision with community input.
- **MF:** Noted that expectations around consultation have evolved, now more formalised and higher. Emphasised that Renewco will continue to consult on projects individually, with the CLG an added forum to look across all three projects cumulatively.
- **RM:** Queried whether all 21 CCs on the initial invite were invited.
 - **RK:** Explained that all CCs with infrastructure and those adjacent were invited.
 - **MB:** Noted poor attendance at another event that afternoon, reinforcing idea that CCs face accessibility challenges.
- **DB:** Requested to proceed to the presentation.
 - **MB:** Appreciated the consolidated update on various projects; requested inclusion of Milton Farm BESS in future.
- **RK:** Reiterated that any group not in attendance will remain welcome.
- **GG:** Asked for clarification on whether individual community engagement will continue.
 - **MF:** Confirmed that there will be consultation as per the established process, alongside updates and discussion via the CLG.

Project Updates

M74 Strategy

- **MF:** [Slide: Project Updates: the M74 Strategy]
 - Explained that the existing infrastructure including the 400 kV overhead line, various substations etc mean that the valley is a bottleneck of where infrastructure goes- it appears congested, but it is because the area is good for these things.

- **MB:** Asked for clarification on whether placing developments further from the grid increases costs.
 - **RK:** Explained that being closer to the grid is better for the developer and the consumer.
 - **MF:** Explained that the cost will be built into the overall project costs.
- **DB:** Stated that the lifetime of turbines used to be 25 years but has gone up to 40 as technology has become more efficient. They can be renewed or upgraded, so 50MW can become 100MW in the future.
 - **RK:** In theory yes, but there will be a cap in terms of size. Referenced Clean Power 30 plan which moves a lot more towards need case and balancing need against supply.
- **JC:** Asked whether Renewco can say which substations the projects will connect to, and whether these will need upgraded. Referenced a recent upgrade to Elvanfoot substation which had a significant impact.
 - **MF:** Yes, all of this information is in the public domain and on the TEC register. It is for NESO to decide where the connection goes, and for Scottish Power to facilitate the grid connection.

Project Overview: Key Features

- **MF:** [Slide: The M74 Strategy – Key Features]
- **JC:** Asked for clarification on whether there would be solar on Watchman or Ravengill.
 - **RK:** Confirmed there will not.
- **MB:** Asked why the BESS are all 50MW.
 - **MF:** Replied that it is a good size for batteries to be packaged.
- **JC:** Asked whether the BESS will store electricity from the wind farm sites, and whether they will share the cable to the substation.
 - **MF:** Explained that during times where power can't be exported, batteries will be used to provide more resilience.
 - **RK:** Suggested that as part of the CLG forum, if attendees would like a battery expert to attend one of the meetings it could be arranged.
- **MB:** Asked whether turbines will ever be associated with Milton Farm BESS.
 - **RK:** Guaranteed it will only ever be a standalone BESS site.
- **SJ:** Asked why solar was removed from Ravengill.
 - **MF:** Explained that having looked at practicalities, it cannot be delivered on the intended scale. On balance the location isn't right for current technology.

M74 West

- **MF:** [Slide: M74 West Energy Park Update]
- **DB:** Asked whether the fact that the M74 is a private road has any bearing.
 - **MF:** Responded that dialogue is with both M6 Autolink (manager of the road) and Transport Scotland (responsible for management of the road on behalf of the

owner who is the Scottish Government). Transport Scotland are the statutory consultee.

- **JC:** Asked for clarification on whether consultation with the MoD is on low level flying or Eskdalemuir Seismic Array (EKA).
 - **MF:** This is on both. On low level flying Renewco have provided MOD with the required information, but on EKA the project is in the holding pattern along with all other wind energy development within the 50 km consultation zone.
- **DB:** Asked what will replace these projects once their operational life runs out.
 - **RK:** Some will be repowered and some will be shut. Technology may be significantly different in 40 years.
- **GG:** Suggested that in terms of legislation, when a wind farm has been consented it sets a precedent that the site is suitable in perpetuity.
 - **RK:** Compared to housing – consent for a bungalow does not imply consent for a ten-storey house. The principle is established, but not specifics.

Watchman

- **MF:** [Slide: Watchman Energy Park Update]
- **JC:** Inquired about access routes, and whether an upgrade would be needed to the Elvanfoot substation.
 - **MF:** Confirmed that access will be via the A702, with a number of options currently under consideration and that more information will be available at the public consultation on 12th May. An upgrade will likely be needed to the substation and that is for SPEN to deliver rather than the Watchman project.
- **GG:** Asked whether there had been feedback from NatureScot regarding the SSSI.
 - **MF:** Development is kept out of the SSSI. At the consultation event there will be further information on the proposed Biodiversity Enhancement and Management Plan which will include actions which could support enhancement of the SSSI.

Ravengill

- **MF:** [Slide: Ravengill Energy Park Update]
- **JC:** Asked about Euroforest proposals and abnormal load transport.
 - **MF:** Confirmed that Renewco are aware of the proposals and are in discussion with the developer. Access to the southern cluster of turbines is likely to come through the forest (as indicated on Euroforests plans).
- **JC:** Asked about abnormal loads and whether they would come through Elvanfoot.
 - **MF:** Confirmed that at present the access would go through Elvanfoot but design is ongoing. It is early days and Renewco are about to start discussing suitability with South Lanarkshire Council. Aware of the bridge as a pinch point for HGV

traffic- nothing is off the table in terms of upgrades and all proposed routes shown are indicative at this stage.

- **SJ:** Asked whether consultation dates are confirmed.
 - **AM:** Confirmed dates are final and invitation will go out on 26.04.
- **RM:** Asked whether there will be two extensions to the Elvanfoot substation, and whether the connection will be overhead.
 - **MF:** Renewco are speaking to SPEN about the best option for grid connection and what their plans are for the required upgrade of the Elvanfoot substation. At the moment, the grid connection is expected to be via an underground cable.
- **GG:** Asked whether there will be information on the zone of theoretical visibility (ZTV) at the consultation event, and about the aviation lighting (red light) impact.
 - **MF:** Confirmed the ZTV will be available , and that Renewco's landscape architect will be there with WindPlanner software available to see how the turbines will look from certain locations (Note: this will be somewhat dependant on internet access). Explained that it is common to have a reduced lighting scheme where not all turbines require to be lit to meet aviation safety requirements - on a scheme of 30, typically 10 or 12 may be lit. It is too early in the design process to meaningfully present the likely lighting scheme that will be proposed.

Community Updates

- **RK:** Confirmed that there is no obligation for updates from communities, but people can speak if they would like to. Also, a forum to communicate positive / negative actions and experiences related to other developments.
 - **AM:** Reiterated that members can get in touch via email with updates as and when needed.
- **MB:** Mentioned Conrad's proposed battery storage which is very near to Renewco's Milton Farm site.
 - **RK:** Asked for clarification of location.
 - **MB:** Confirmed that it is a mile east of Beattock, but that it does not yet have a grid connection.
- **GG:** As a topic for future meetings, it may be beneficial to have a look at the principles of CBF and how it works.
 - **MB:** SOSE and the CLES are trying to draw together 5 principles of engagement between developers and local communities. It discusses employment, openness etc, and is a set of things which would be perceived as good by all involved. MB to share contact details.

- **RK:** Explained the Asset Face platform. Renewco are aware of the burden on communities, and are keen to use technology to take away some of the admin involved in administering funds.
- **DM:** Explained that Muirkirk are about to sign an agreement on Mill Rig – community councils included in East Ayrshire and South Lanarkshire. The group will run the community benefit side of things.
 - **NL:** asked whether there is support being offered for this.
 - **DM:** Explained that On Path are supporting at the moment, but that a new constitution is about to be signed.

Q&A:

- **JC:** Asked how often the CLG will meet.
 - **RK:** Confirmed that it will be roughly every two months, but this can change.
 - **SJ:** Suggested that it might be worth scheduling meetings to coincide with project milestones. Suggested that we should decide on a schedule the next time we meet.
 - **MF:** The CLG is intended to be very high level – as projects progress, we will update communities and hold consultation events. There may be instances where we don't have a major update, but these meetings could be used to go into detail on CBF, specific technical issues etc.
 - **GG:** Suggested that looking at the noise profile of turbines could be useful.

Agreement of date for next meeting:

- Meeting to take place in late June 2025. Exact date tbc.

AOB

- SJ suggested that authorisation to share email addresses could be requested from attendees there and then but RK objected on GDPR grounds.
- SJ then suggested that an authorisation form could be prepared and distributed at the next meeting of the CLG.

Actions Agreed

- Renewco include Milton Farm BESS in next update.
- MB to share SOSE/CLES details.

- Renewco to share copy of the presentation to attendees.
 - Renewco to discuss GDPR implications regarding SJs request for email addresses of other members.
-

Appendix 14.3: CLG Meeting 2 Minutes



Renewco Power M74 Community Liaison Group – Meeting 2

Date: 23rd June 2025

Location: The Old School House, Abington

Attendees:

- Kenneth Wills – Kirkpatrick Juxta Community Council (KW)
- Franca Bruno – Kirkpatrick Juxta Community Council (FB)
- Tommy Cronin – Douglas Community Council (TC)
- Brian Muir – Douglas Community Council (BM)
- Jeremy Cooper – Crawford and Elvanfoot (JC)
- Steve Johnston – Leadhills Community Council (SJ)
- Gerard Godfrey – Leadhills Community Council (GG)
- Elizabeth Shelby – Thornhill Community Council (ES)
- Robert McCafferty – Wanlockhead Community Council (RM)
- David Dick – Closeburn Community Council (DD)
- Mike Steele – Closeburn Community Council (MS)
- Mick Barker – Moffat Community Council (MB)
- Neil Ingram – Biggar Community Council (NI)
- Richard Koiak – Renewco Power (RK)
- Maeve Fryday – Renewco Power (MF)
- Nick Lopez – Renewco Power (NL)
- Daisy Geissler – Cavendish Consulting (DG)
- Grace McGovern – Cavendish Consulting (GM)

Actions Agreed:

- Renewco to share email addresses with those who consented.
- Cavendish to circulate draft amend to ToR suggested by MS.
- Renewco to arrange a BESS expert for next meeting.
- Renewco to prepare and upload visualisations requested by MS and MB.
- Renewco to check consultation list for Ravengill with relation to Scoping Request.
- Renewco to address issue with Vimeo.
- Renewco to propose some suggested scenarios for CBF distribution.
- Members to share community updates.

1. Attendance / Apologies

- Attendance noted as above.

- Apologies:
 - Carmichael Community Council
 - Sanquhar Community Council
 - Muirkirk Community Council
 - CEDAR
-

2. Approval of Previous Minutes

- SJ: Queried inclusion of his previous comments.
 - DG: Clarified that comments regarding GDPR were included in AOB.
 - RK: Asked whether current format is acceptable.
 - MS: Asked that actions be included at the beginning of the minutes.
 - RK: Raised SJ's request for other members' contact details.
 - SJ: Suggested that he has been denied the opportunity to have access to other members' email addresses.
 - RK / MF: Renewco want to respect everyone's personal preference on this, and do not want to pressure people into sharing their details. Renewco contacted people via publicly accessible information.
 - [List of email addresses was passed around] **Action:** details will be shared with those who signed up.
 - Terms of Reference (ToR):
 - RK: Noted concerns about Renewco holding chair voiced by SJ.
 - MS: Request to include line on community needs in ToR.
 - **Action:** Cavendish/Closeburn to circulate draft wording.
 - TC/BM: Discussion on timeframe for proxy member notice (extended vs. 3-day limit).
 - Expert Input:
 - **Action:** Renewco to arrange a BESS expert presentation with defined scope.
 - Noise: To be addressed at future stage.
 - Meeting Schedule:
 - Agreement to maintain current schedule unless milestone-triggered.
 - Option for virtual meetings in winter discussed.
-

3. Project Updates

Renewco Power Overview

- Overview of Renewco's wider project context shared via maps.

The M74 Strategy

- MF: [slide: Project Updates: The M74 Strategy]
 - MB: Concerns about wind resource overlap (wind stealing) among developers.
 - MF/RK: Clarified that the wind is not owned by anyone, but that modelling methods take into account this wake effect. This is not discussed with other developers, but clarified that other proposed projects are included in modelling.
 - SJ: Referenced a case in Holland where a developer is taking another to court due to the impact of one windfarm on another.
 - FB: Raised soil erosion and water management concerns.
 - MF: assured strong regulatory standards and methodologies exist in Scotland. The EIA Report will provide an outline Construction Environmental Management Plan (oCEMP) which will identify the measures proposed to manage surface water runoff, which is the primary mechanism for soil erosion and associated impacts on water bodies in Scotland.

M74 Strategy – Key Features

- MF: [Slide – The M74 Strategy Key Features]
 - FB: Questioned whether BESS will remain at 50MW.
 - MF confirmed 50MW is current plan; flexibility depends on grid reform.
 - JC: Mentioned lack of capacity at Elvanfoot substation.
 - RK: Discussed grid reform works currently underway, and the fact that SPEN will be responsible for delivery of the grid connections.
 - BM: Highlighted that there is six BESS in planning near Douglas.
 - GG: Questioned whether there is a body overseeing this development.
 - RK: Referenced Clean Power 2030 plan, which shows that there is an oversubscription of batteries in the queue. There is a spatial energy plan which is expected to be published in 2026.
 - FB: Questioned why BESS is now included in all wind farms.
 - MF: Clarified that BESS improves project efficiency and makes the most of grid connections.
 - SJ: Questioned what the BESS means for Ravengill's productivity.

- MF: Explained that excess power would go to batteries, but that how long it takes to charge depends on the turbines' capacity and how much they are generating.
- JC: The placing of batteries is important- has written to Secretary of State for Net Zero on this issue, as SLC have said there is no guidance.

M74 West

- MF: [Slide – M74 West Energy Park Update]
- JC: asked whether MoD Concerns relate to flying or Eskdalemuir.
 - MF: Both. Flying issues have been addressed through provision of clarification information, and the Eskdalemuir issue is subject to the ongoing process to revise the methodology for calculating available seismic budget etc. In respect of Eskdalemuir the project is in the same position as all other projects within 50 km of the Eskdalemuir array that do not already have seismic budget allocated under the existing system of calculation.
 - GG: Has heard that MoD is planning to move the facility.
- BM: Asked about August decision feasibility.
 - MF: We can only work based on what SLC have asked the ECU for.
- ES: Asked for the height of the turbines.
 - MF: up to 220m to tip.

Watchman

- MF: [Slide – Watchman Energy Park Update]
- JC: Regarding access, made reference to Crookedstanes and Lion Hill wind farms which were withdrawn. They wanted to come through Glasgow but were redirected via Dumfries due to passing through Elvanfoot.
 - MF: Responded that technology is constantly changing and we are adapting to that.
- ES: asked about turbine height.
 - MF: 240m to tip.
- FB: Asked about the proposed Southern Upland Way (SUW) diversion.
 - MF: Explained that in the SUW crosses through the site at the far west. Plan is for substation and BESS to be next to the path. We think we can improve the SUW through the site if we create a permanent diversion. The area between the current and diverted SUW will be used for a construction compound and thereafter planted to create screening to improve the experience of walkers. Further detail will be included in the application.
- MS: Viewpoints at the consultation will be predominantly from the East.

- MF: Explained that this was based on where Renewco thought people attending would be interested in.
- **Action:** Renewco to provide Visualisations representative of the area of the Thornhill Uplands by using the A76 as a further video of how the project may be experienced, as well as the Moffat equivalent based on views coming up the motorway between Lockerbie and Moffat.

Ravengill

- MF: [Slide – Ravengill Energy Park Update]
- SJ: Leadhills CC have been asked by SLC to respond to the Scoping Request. Asked which other CCs have been asked.
 - **Action:** Renewco to check consultation list.
- RM: Asked about visualisations and the fact they didn't work at the consultation event.
 - MF: Explained that visualisations availability was based on internet access (no wifi and poor mobile phone reception made this challenging) and they are now available online.
 - SJ: Raised an issue with accessing Vimeo without creating an account.
 - **Action:** Renewco to look into problem.

5. Community Benefit Discussion

- NL: [Slide – Community Benefit Discussion]
- KW: Asked if the approach taken to encourage spending was legislative, or Renewco's choice.
 - RK: Explained that local authorities and communities are accusing each other of failing to spend the funding. Explained that Renewco just want to encourage a plan, this may be to save or invest money for a specific purpose.
- JC: Asked if there is a precedent for creating a new body.
 - MS: Highlighted the Nith Valley as a useful example.
 - MF: Referenced the 9CC in East Ayrshire.
- FB: Voiced a strong belief in CCs taking responsibility, as well as Foundation Scotland. Do not want to force communities to spend money and waste it.
 - RK: Explained that Renewco are looking at a period of 3 years- it is an impetus to spend money. Looking to create a document based on good practice.
- GG: Referred to Clyde Windfarm distribution body – criticised involvement of Local Authority, and bureaucratic system put in place.

- RM: Clyde is an example of different approaches from different Local Authorities, as Dumfries and Galloway allocated the money to communities.
- RK: Referred to risk involved should CCs dissolve. All of this is a challenge with documentation – Renewco want to have these discussions and agree in advance.
- MB / MS: Expressed preference for Foundation Scotland to be involved rather than Local Authorities.
- MB: Questioned why there is no CBF for standalone BESS. Also questioned the statement that £5,000 per MW is best practice- it is a 2014 figure and relates to price of energy in 2014. Councils such as Highland are requesting a 50% increase. Suggested trying to make this project more innovative in line with others.
 - RK: Will think about how to address this.
- KW: Asked about whether SSE are 100% shareholders in Renewco, and if projects are sold on to them.
 - RK: SSE has invested in Corren Capital, who have in turn invested in Renewco, but the projects will not necessarily be sold to SSE. The vast majority of, if not every, wind farm project that has been developed in Scotland has been sold at some point (e.g. to gain investment to construct). We want to sign CBF deals because then whoever buys the projects will be obliged to stick to them.
 - KW: Queried whether additional CBF should be calculated based on profit of uplift from the scale when the project is passed on to another investor.
 - RK: Explained CBF is an oddity of wind development in that no other type of development is expected to provide such direct funding to communities, but appreciates the point and will take the challenge to think of something innovative.
- FB: Asked which areas will be eligible for funding.
 - NL: Explained that radius had not been confirmed yet. We will have an agreement in place for each windfarm, even if communities decide the preference would be for one scheme covering all of them.
- RM: Questioned composition of CLG without knowledge of which areas would benefit.
 - RK/DG: Highlighted that meetings are not just about community benefit- they are designed to be information exchange.
 - **Action:** Renewco to suggest some scenarios for funding radii.
- KW: Questioned why there is no opportunity for community ownership.
 - RK: Have never seen it work.

6. Community Updates

- **Action:** Community representatives to submit their updates before next meeting.
 - MS: provided link to website which outlines projects Closeburn CC are involved in www.nithvalley.org
-

7. Q&A

- FB: Queried turbine decommissioning timelines (2069–2073).
 - RK: Reuse of parts common; blade recycling improving.
 - BM: Industry evolving to manage this effectively.
-

8. Matters for Next Meeting

- Potential to arrange a BESS expert.
- Date TBC- late August / early September.

Appendix 14.4: CLG Meeting 3 Minutes



Renewco Power M74 Community Liaison Group – Meeting 3

Date: 10th September 2025

Location: The Old School House, Abington

Attendees:

- Kenneth Wills – Kirkpatrick Juxta Community Council (KW)
- Tommy Cronin – Douglas Community Council (TC)
- Jeremy Cooper – Crawford and Elvanfoot (JC)
- Steve Johnston – Leadhills Community Council (SJ)
- Gerard Godfrey – Leadhills Community Council (GG)
- Karen Morrison – Wanlockhead (KM)
- Robert McCafferty – Wanlockhead Community Council (RM)
- David Dick – Closeburn Community Council (DD)
- Mike Steele – Closeburn Community Council (MS)
- Mick Barker – Moffat Community Council (MB)
- Neil Ingram – Biggar Community Council (NI)
- Richard Koiak – Renewco Power (RK)
- Maeve Fryday – Renewco Power (MF)
- Salma Mahmud – Cavendish Consulting (SM)
- Grace McGovern – Cavendish Consulting (GM)

Actions Agreed:

- Renewco to provide an overview of cumulative project maps (including overlays) in both electronic and fixed formats.
- Moffat to circulate the ESPR (Energy Storage Performance Report) referenced by MB.
- Renewco to prepare and present a range of Community Benefit Fund (CBF) scenarios and suggestions for detailed discussion at the next meeting.
- Cavendish to circulate a Doodle Poll with proposed dates for the next meeting, alongside the finalised minutes, to give members options and advance notice.

1. Attendance / Apologies

- Attendance noted as above.
- Apologies:
 - Carmichael Community Council
 - Thornhill Community Council
 - Duneaton Community Council

- Muirkirk Community Council
- CEDAR

2. Approval of Previous Minutes

- Outstanding actions from 23.06 minutes:
 - RK: Noted that differing from the shared minutes, he would provide an initial overview on BESS at this meeting before bringing in an external expert if desired by members.
- RK outlined two initial options for visualising Community Benefit Fund (CBF) distribution:
 1. Radii centred on the site centre point.
 2. Radii based on the site boundary.
 - MB: Request for Renewco to provide clearer, more user-friendly maps.
- RK: confirmed that a BESS presenter can be lined up for a future session; and that the purpose of the presentation was to allow members to establish a common understanding first.
- RK: Confirmed that minutes are closed.
 - Minutes approved by the members.

3. Project Updates

Renewco Power Overview

- Overview of Renewco's wider project context shared via maps.

The M74 Strategy

- MF: [slide: Project Updates: The M74 Strategy]
- MF: confirmed slides are consistent with previous meetings.
 - GG: Confirmed that Glensalloch Wind Farm was at consultation last week (1st – 3rd September).
 - MS: Asked if a standalone set of maps, that are user friendly, high quality and downloadable could be shared.
- **Action: Renewco to prepare and circulate a standalone set of maps, including BESS locations and scales.**
 - JC: Asked why Renewco BESS locations were not highlighted.
 - MF Confirmed they are within the site boundaries.

Strategy:

- MB: asked who authored the "M74 Strategy" and expressed concern about the term being used by other developers without a clear plan.
 - MF: Acknowledged this point but confirmed that the 'M74 Strategy' is Renewco's own strategy.

- MB: The strategy has been capitalised by other developers and condoned the use of the word strategy as believes there is a lack of one present in the wider developments across the M74 belt.
 - RK: Asked if members would welcome a forum including other developers.
 - Members agreed that this would become unmanageable.

Policy

- GG: Queried whether the Scottish Government has a central strategy or a laissez-faire approach.
 - RK: The Scottish Government sets policy; each developer submits its own application. All S36 applications are available to view on the Energy Consents Unit (ECU) portal.
 - GG: Spoke of an example of a Freedom of Information (FOI) request on all S36 applications in Scotland – which GG understand was denied due to a lack of a comprehensive database within the Scottish Government.
 - RK: Potential that this request was not honoured due to the information being accessible elsewhere – e.g. the ECU portal.
- MB: Stated that there seems to be a massive oversubscription of planning applications which there is a lack of wider strategy for. Confirmed that Moffat CC have written on the back of the Highland Community Councils request for a moratorium on all renewable energy applications.
 - JC: Raised concerns about turbines being curtailed while consumers still pay for power.
 - RK: Outlined the forthcoming Strategic Energy Plan (SEP) as part of the grid reform, focus of the Department for Energy Security and Net Zero. There are not enough projects in the pipeline for the capacity that is required for policy goals.
 - MF: Stressed Renewco's aim to be transparent about grid capacity, BESS and planning. The SSEP will identify across GB how much generation there is and how much is still required / when this can realistically come forward.

M74 West

- MF: [slide: M74 West Energy Park Update]
- MF: South Lanarkshire Council objected at Planning Committee (HES/MoD/NATS issues, plus ECU not granting extension). Negotiations ongoing with NATS, HES, and MoD regarding Eskdalemuir. Noted that LVIA issues were not raised as a grounds for objection.
 - RK: Asked Moffat CC if there was any news on Scoop Hill Wind Farm, given their closer proximity to Eskdalemuir.
 - MB: No update.

Watchman

- MF: [slide: Watchman Energy Park Update]

- MF confirmed the met mast has been installed and the project has reached design freeze; submission was targeted before Christmas, with consultation expected in January.
 - MS: Asked whether maps show transmission lines.
 - MF: Confirmed they do not as SPEN is responsible for delivery of the grid connection.
 - GG: Queried grid connection timescale.
 - MF: 2036 as it stands under current queue, but grid reform should accelerate this.
 - JC: Noted SPEN only builds extensions post-consent and land may be limited.
 - RK: Renewco can only act on information provided by SPEN.

Ravengill

- MF: [slide: Ravengill Energy Park Update]

4. Battery Energy Storage System Presentation + Discussion

- RK: [slide: What are Battery Energy Storage Systems (BESS)]
- RK: Explained that in the Renewco team, team members with both Ofgem and NESO experience contributed to the presentation.
- RK: Introduced Renewco's approach to all BESS; noted that all Renewco wind energy projects are hybridised.
 - MS asked about the cooling process for BESS.
 - MF confirmed that air conditioning is used.
 - MS: Is there a backup generator?
 - RK: Confirmed this is two different things – if the batteries are running, it doesn't need cooled. The BESS would also have a distribution level supply to provide power for ancillary functions (e.g. operating heating and cooling systems (HVAC)).
- JC: If charged at its full rate to the point where there is a power cut, it would need be cooled.
 - MF: The power control system shuts down before overheating; UK climate is mild for these systems.
 - MS: Questioned why systems aren't designed architecturally to stay cool
 - MF: The UK approach works and is based on containerised systems with built in HVAC.
 - JC: Voiced frustration about lack of resilience of BESS, comparing to e-bike fire risks and lack of regulation and that the Planning System should hold authority to regulate health and safety associated risks. Referenced the Elvanfoot BESS application, where the Head of Planning said fire safety is not a matter for the PAC.
 - RK: Noted planning consent is sperate from ongoing health & safety compliance, which regulations enforce. BESS differs fundamentally from e-bikes.
 - NI: Confirmed planning only covers planning issues, not health & safety.

Noise

- JC: Planning allows noise increase over current levels and cited examples of audible 45dB fans; MF clarified, for human hearing a 3dB change in sound level is generally accepted as the minimum change discernible. Distance from the noise source matters, as does fabric of buildings, in terms of audibility (e.g., 200m vs inside a building). Environmental Health Officers (EHO) handle noise assessments and noise levels are generally set as those predicted external to buildings.
 - MF: BESS must demonstrate no nuisance noise.

Fire Risks & Design

- MB: Cited an EPRI report showing many BESS fires with unknown or design-related causes and asked what Renewco will do differently.
 - MF: Explained controlled burndown is a recognised approach to fire control and management and often is chosen as the strategy to tackle fires where it is considered to be safer and result in reduced potential for pollution.
 - MB: Highlighted lack of fire service training
 - MF: Said developers often-but aren't obliged to-engage with fire services with regard to fire response planning.
 - JC: Asked if Renewco engage with the Fire Department.
 - RK: Confirmed they did a site visit for M74 West - Fire & Rescue aren't statutory consultees and more guidance would help. Lithium-ion is becoming safer as understanding grows.
 - JC: Raised concern if second-life car batteries are to be used.
 - MF: Battery recovery/regeneration is an emerging market but costly in Europe.
 - RK: Emphasised cost reduction cannot compromise safety.

Hybrid battery vs connected battery.

- RK: [Slide 5: What are BESS used for?]
 - JC: BESS can respond in milliseconds in comparison to Pump Storage Hydro. Queried Renewco's storage technique regarding solar.
 - RK: Answered that BESS manage overlaps in wind/solar generation, reducing network infrastructure needs.
 - MS: Asked about capacity numbers
 - MF: 30% is general rule of thumb rather than specific.
 - GG: Questioned duration during outages
 - SJ: Asked about storage capacity for Ravengill
 - MF: Detailed design (inc. MW capacity) is next stage, aiming to have this ready for November consultation.
 - SJ: Asked if this could this be done by November consultation.
 - MF: Confirmed hopes to have location / initial layout / scale in time for November consultation. This will only ever be an approximation as Met Mast