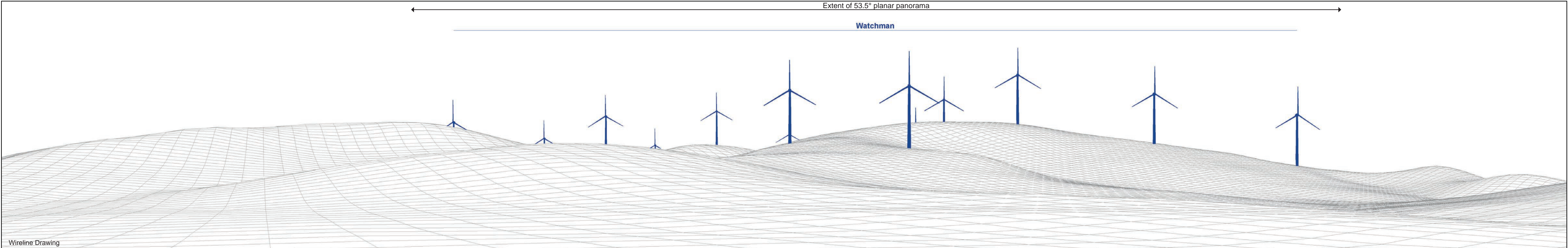


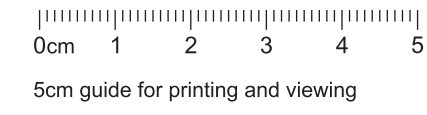
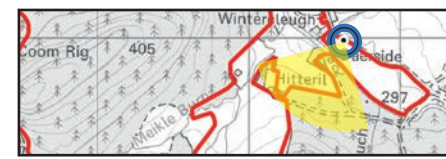


Baseline Photograph

This image provides landscape and visual context only



Wireline Drawing



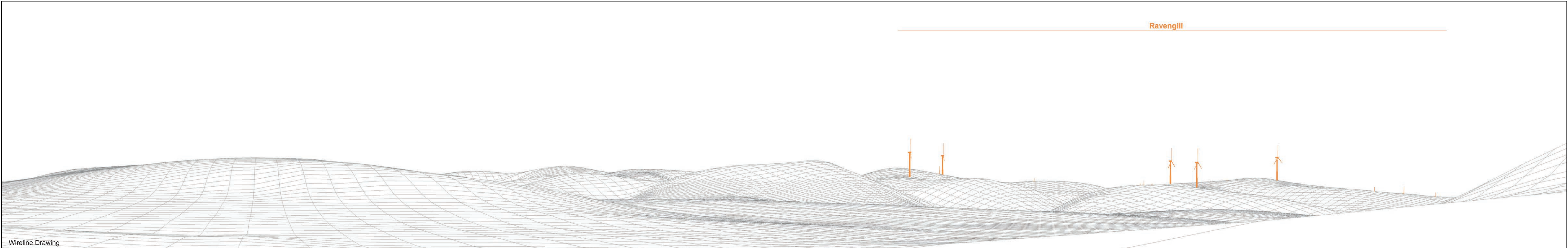
- Proposal
- Consented
- Application
- Appealed
- Existing
- Construction
- Scoping

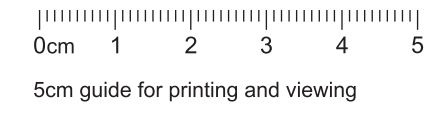
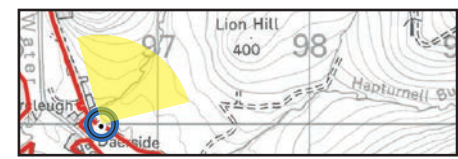
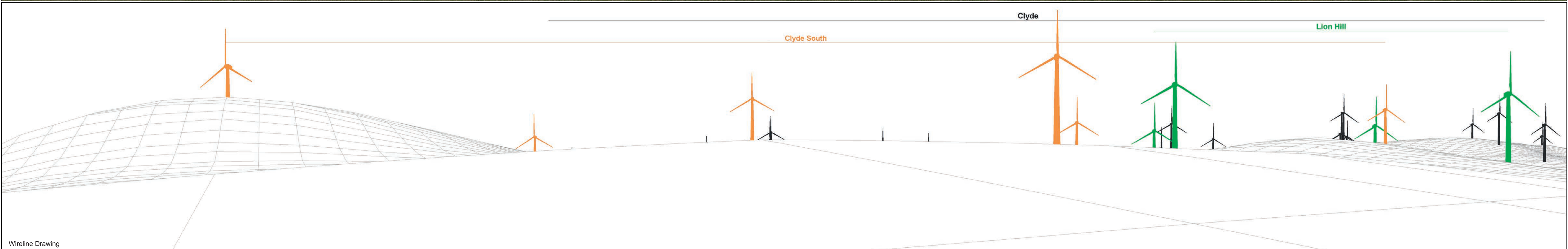
OS Reference: 296627 609983
 Eye Level: 293.35m AOD
 Direction of View: 210°
 Distance to Development: 2463m

Horizontal field of view: 90° (cylindrical projection)
 Principal Distance: 522mm
 Paper Size: 841 x 297mm
 Correct printed image size: 820 x 130mm

Camera: NIKON D610
 Lens: 50mm
 Camera Height: 3.5m AGL
 Date and Time: 11/6/2025 13:35

Figure: 4.30.1
 Viewpoint 10: Wintercleugh





- Proposal
- Consented
- Application
- Appealed
- Existing
- Construction
- Scoping

OS Reference: 296627 609983
 Eye Level: 293.35m AOD
 Direction of View: 30°
 Distance to Development: 2463m

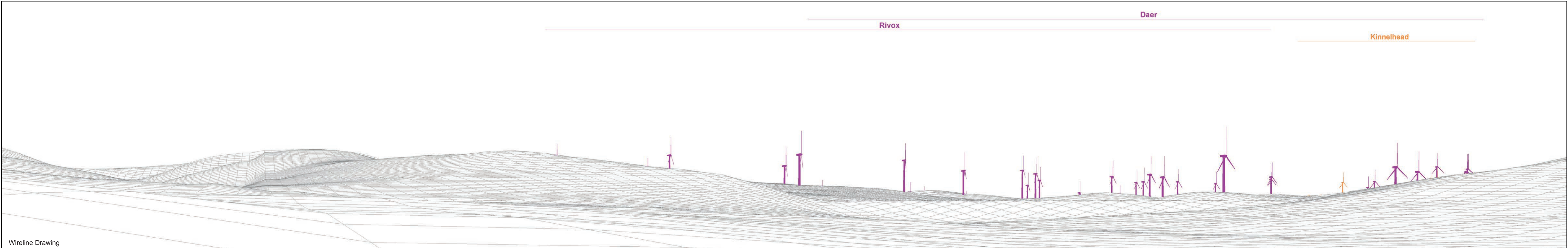
Horizontal field of view: 90° (cylindrical projection)
 Principal Distance: 522mm
 Paper Size: 841 x 297mm
 Correct printed image size: 820 x 130mm

Camera: NIKON D610
 Lens: 50mm
 Camera Height: 3.5m AGL
 Date and Time: 11/6/2025 13:35

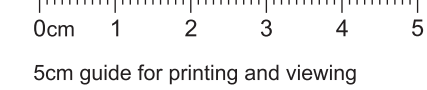


Baseline Photograph

This image provides landscape and visual context only



Wireline Drawing



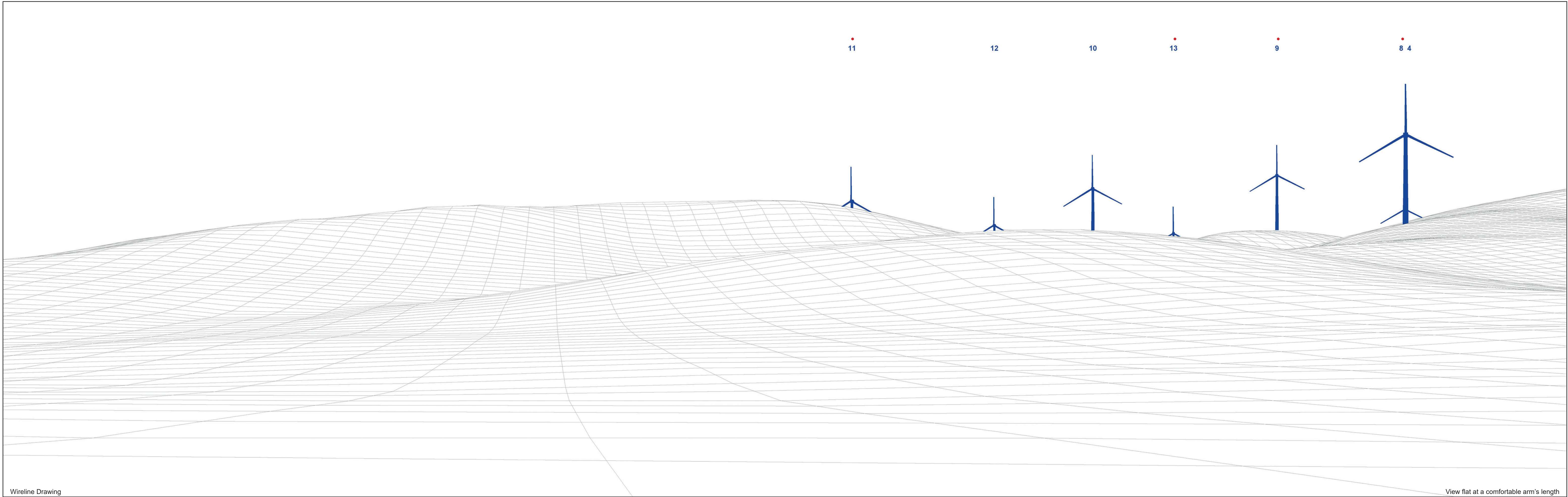
- Proposal
- Consented
- Application
- Appealed
- Existing
- Construction
- Scoping

OS Reference: 296627 609983
 Eye Level: 293.35m AOD
 Direction of View: 120°
 Distance to Development: 2463m

Horizontal field of view: 90° (cylindrical projection)
 Principal Distance: 522mm
 Paper Size: 841 x 297mm
 Correct printed image size: 820 x 130mm

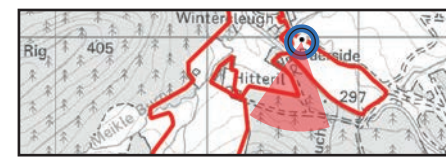
Camera: NIKON D610
 Lens: 50mm
 Camera Height: 3.5m AGL
 Date and Time: 11/6/2025 13:35

Figure: 4.30.4
 Viewpoint 10: Wintercleugh

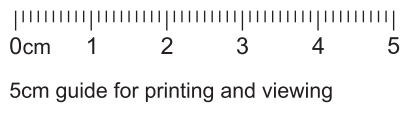


Wireline Drawing

View flat at a comfortable arm's length



- Aviation Light
- ✦ Proposal
- ✦ Existing
- ✦ Construction



OS Reference: 296627 609983
 Eye Level: 293.35m AOD
 Direction of View: 188.5°
 Distance to Development: 2463m

Horizontal field of view: 53.5° (planar projection)
 Principal Distance: 812.5mm
 Paper Size: 841 x 297mm
 Correct printed image size: 820 x 260mm

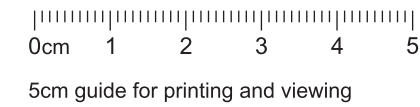
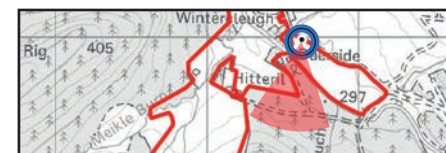
Camera: NIKON D610
 Lens: 50mm
 Camera Height: 3.5m AGL
 Date and Time: 11/6/2025 13:35

Figure: 4.30.5
 Viewpoint 10: Wintercleugh



Photomontage

View flat at a comfortable arm's length



5cm guide for printing and viewing

OS Reference: 296627 609983
 Eye Level: 293.35m AOD
 Direction of View: 188.5°
 Distance to Development: 2463m

Horizontal field of view: 53.5° (planar projection)
 Principal Distance: 812.5mm
 Paper Size: 841 x 297mm
 Correct printed image size: 820 x 260mm

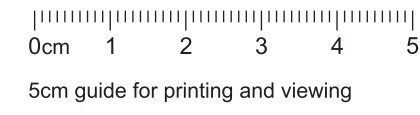
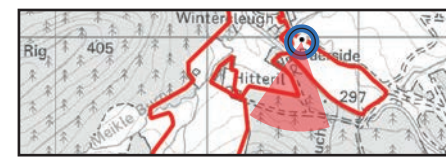
Camera: NIKON D610
 Lens: 50mm
 Camera Height: 3.5m AGL
 Date and Time: 11/6/2025 13:35

Figure: 4.30.6
 Viewpoint 10: Wintercleugh



Photomontage

View flat at a comfortable arm's length

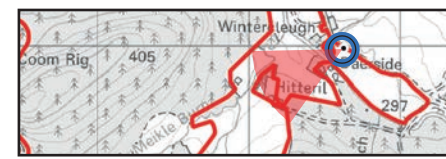
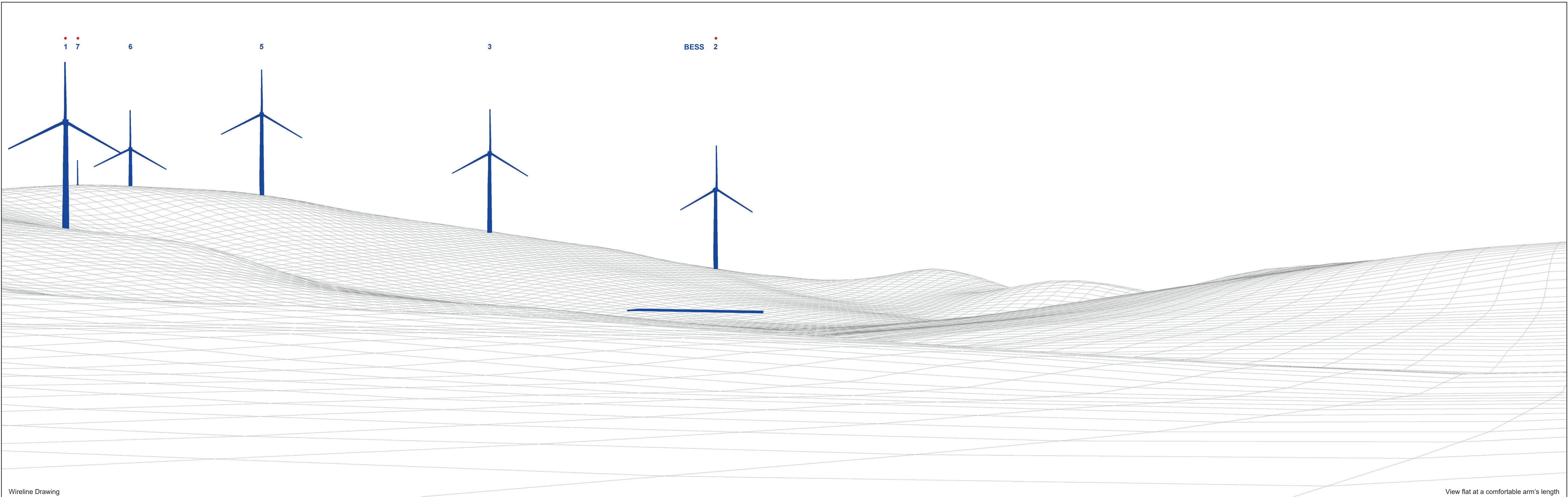


OS Reference: 296664 609970
 Eye Level: 293.59m AOD
 Direction of View: 189°
 Distance to Development: 2476m

Horizontal field of view: 53.5° (planar projection)
 Principal Distance: 812.5mm
 Paper Size: 841 x 297mm
 Correct printed image size: 820 x 260mm

Camera: NIKON D610
 Lens: 50mm
 Camera Height: 3.5m AGL
 Date and Time: 10/11/2025 17:50

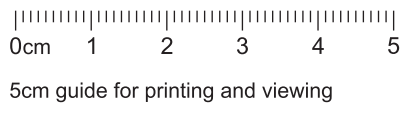
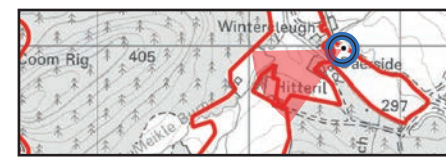
Figure: 4.30.7
 Viewpoint 10: Wintercleugh





Photomontage

View flat at a comfortable arm's length



OS Reference: 296627 609983
 Eye Level: 293.35m AOD
 Direction of View: 242°
 Distance to Development: 2463m

Horizontal field of view: 53.5° (planar projection)
 Principal Distance: 812.5mm
 Paper Size: 841 x 297mm
 Correct printed image size: 820 x 260mm

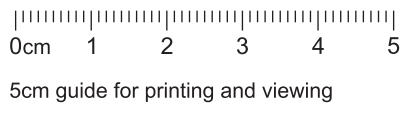
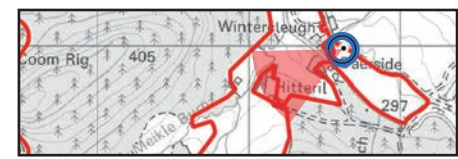
Camera: NIKON D610
 Lens: 50mm
 Camera Height: 3.5m AGL
 Date and Time: 11/6/2025 13:35

Figure: 4.30.9
 Viewpoint 10: Wintercleugh



Photomontage

View flat at a comfortable arm's length



5cm guide for printing and viewing

OS Reference: 296664 609970
 Eye Level: 293.59m AOD
 Direction of View: 242.5°
 Distance to Development: 2476m

Horizontal field of view: 53.5° (planar projection)
 Principal Distance: 812.5mm
 Paper Size: 841 x 297mm
 Correct printed image size: 820 x 260mm

Camera: NIKON D610
 Lens: 50mm
 Camera Height: 3.5m AGL
 Date and Time: 10/11/2025 17:50

Figure: 4.30.10
 Viewpoint 10: Wintercleugh