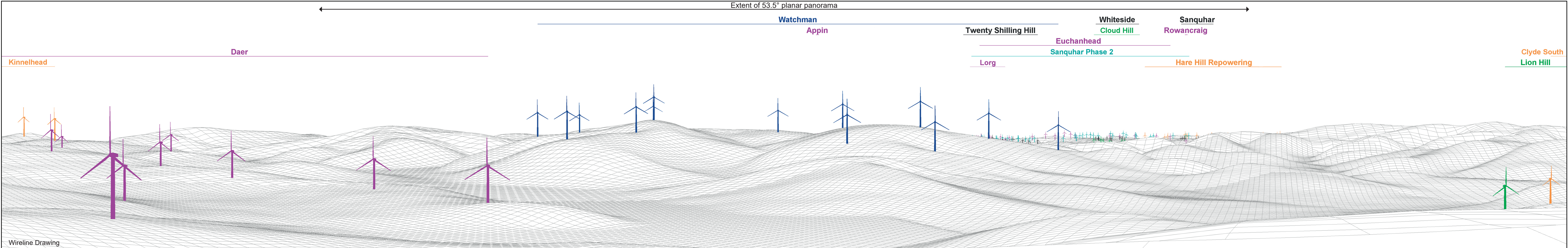




Baseline Photograph

This image provides landscape and visual context only



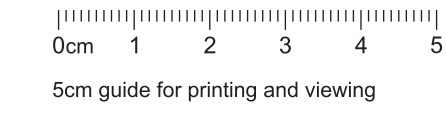
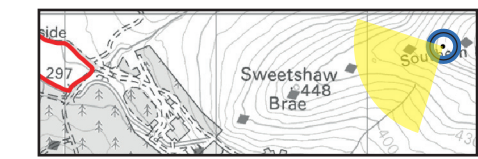
Wireline Drawing

Extent of 53.5° planar panorama

Kinnelhead
Daer
Watchman
Twenty Shilling Hill
Whiteside
Sanquhar
Clyde South

Appin
Lorg
Euchanhead
Cloud Hill
Rowanraig
Lion Hill

Sanquhar Phase 2
Hare Hill Repowering



- Proposal
- Consented
- Application
- Appealed
- Existing
- Construction
- Scoping

OS Reference: 300090 609758
 Eye Level: 564.79m AOD
 Direction of View: 242°
 Distance to Development: 5248m

Horizontal field of view: 90° (cylindrical projection)
 Principal Distance: 522mm
 Paper Size: 841 x 297mm
 Correct printed image size: 820 x 130mm

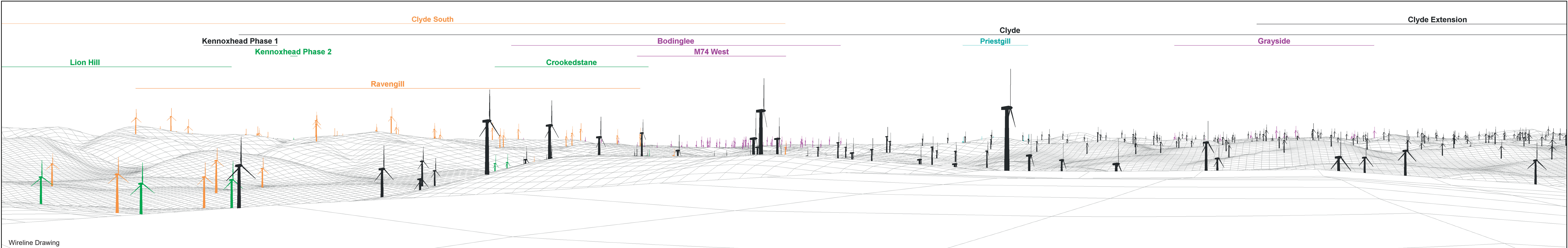
Camera: NIKON D610
 Lens: 50mm
 Camera Height: 3.5m AGL
 Date and Time: 22/10/2025 11:20

Figure: 4.31.1
 Viewpoint 11: Hods Hill
 - Southern Upland Way

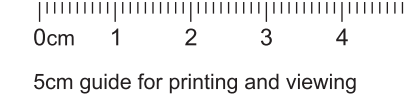
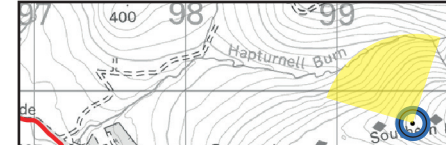


Baseline Photograph

This image provides landscape and visual context only



Wireline Drawing



- Proposal
- Consented
- Application
- Appealed
- Existing
- Construction
- Scoping

OS Reference: 300090 609758
 Eye Level: 564.79m AOD
 Direction of View: 332°
 Distance to Development: 5248m

Horizontal field of view: 90° (cylindrical projection)
 Principal Distance: 522mm
 Paper Size: 841 x 297mm
 Correct printed image size: 820 x 130mm

Camera: NIKON D610
 Lens: 50mm
 Camera Height: 3.5m AGL
 Date and Time: 22/10/2025 11:20

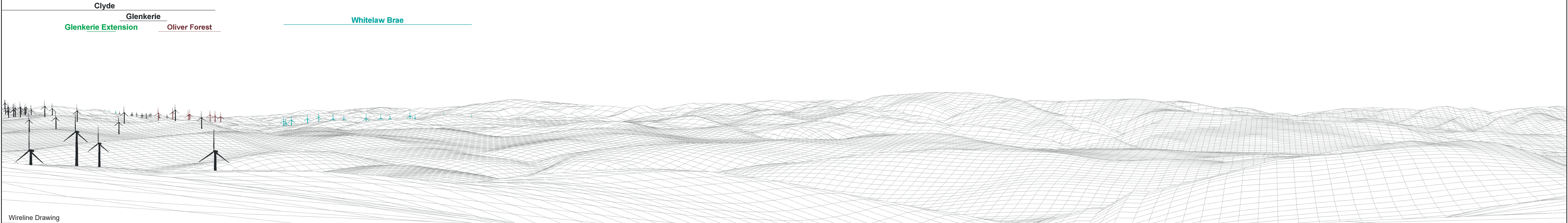
Figure: 4.31.2
 Viewpoint 11: Hods Hill
 - Southern Upland Way



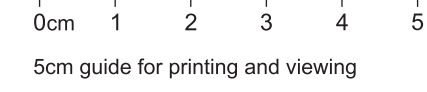
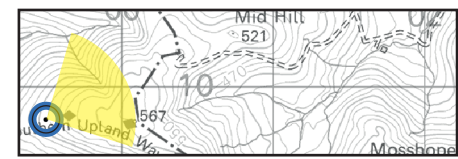
Baseline Photograph

This image provides landscape and visual context only

Clyde Extension



Wireline Drawing



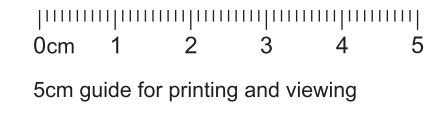
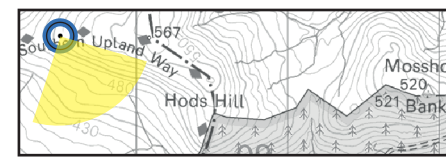
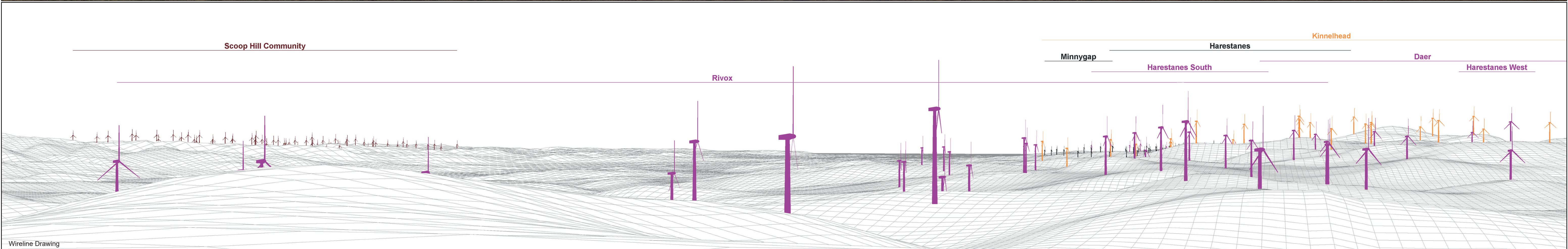
- Proposal
- Consented
- Application
- Appealed
- Existing
- Construction
- Scoping

OS Reference: 300090 609758
 Eye Level: 564.79m AOD
 Direction of View: 62°
 Distance to Development: 5248m

Horizontal field of view: 90° (cylindrical projection)
 Principal Distance: 522mm
 Paper Size: 841 x 297mm
 Correct printed image size: 820 x 130mm

Camera: NIKON D610
 Lens: 50mm
 Camera Height: 3.5m AGL
 Date and Time: 22/10/2025 11:20

Figure: 4.31.3
 Viewpoint 11: Hods Hill
 - Southern Upland Way



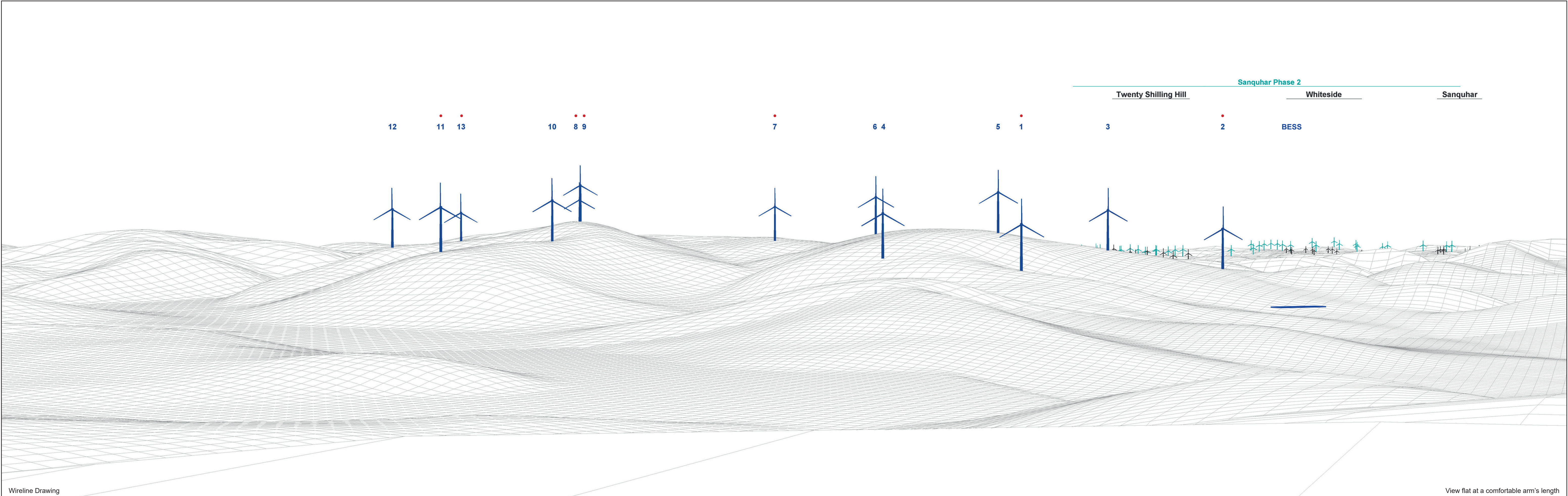
- Proposal
- Consented
- Application
- Appealed
- Existing
- Construction
- Scoping

OS Reference: 300090 609758
 Eye Level: 564.79m AOD
 Direction of View: 152°
 Distance to Development: 5248m

Horizontal field of view: 90° (cylindrical projection)
 Principal Distance: 522mm
 Paper Size: 841 x 297mm
 Correct printed image size: 820 x 130mm

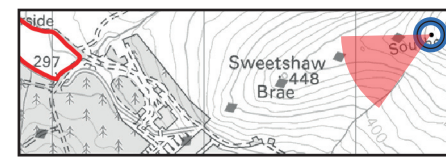
Camera: NIKON D610
 Lens: 50mm
 Camera Height: 3.5m AGL
 Date and Time: 22/10/2025 11:20

Figure: 4.31.4
 Viewpoint 11: Hods Hill
 - Southern Upland Way

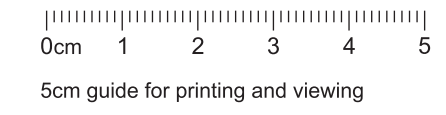


Wireline Drawing

View flat at a comfortable arm's length



- Aviation Light
- ✦ Proposal
- ✦ Existing
- ✦ Construction



OS Reference: 300090 609758
 Eye Level: 564.79m AOD
 Direction of View: 242°
 Distance to Development: 5248m

Horizontal field of view: 53.5° (planar projection)
 Principal Distance: 812.5mm
 Paper Size: 841 x 297mm
 Correct printed image size: 820 x 260mm

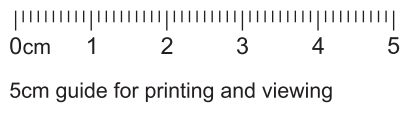
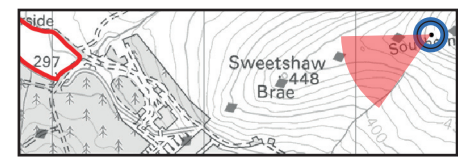
Camera: NIKON D610
 Lens: 50mm
 Camera Height: 3.5m AGL
 Date and Time: 22/10/2025 11:20

Figure: 4.31.5
 Viewpoint 11: Hods Hill
 - Southern Upland Way



Photomontage

View flat at a comfortable arm's length



OS Reference: 300090 609758
 Eye Level: 564.79m AOD
 Direction of View: 242°
 Distance to Development: 5248m

Horizontal field of view: 53.5° (planar projection)
 Principal Distance: 812.5mm
 Paper Size: 841 x 297mm
 Correct printed image size: 820 x 260mm

Camera: NIKON D610
 Lens: 50mm
 Camera Height: 3.5m AGL
 Date and Time: 22/10/2025 11:20

Figure: 4.31.6
 Viewpoint 11: Hods Hill
 - Southern Upland Way