



# Renewco

## P O W E R

## CLYDE SOUTH ENERGY PARK

### WELCOME TO OUR EXHIBITION

Welcome to the first public consultation event for the Clyde South Energy Park ('the Proposed Development').

The purpose of today's event is to provide you with information about the Proposed Development and gather feedback. Representatives from Renewco Power, supported by our Environmental Impact Assessment (EIA) team from SLR and landscape and visual impact specialists MVGLA, are available to discuss the project and answer your questions.

The contents of the information banners are summarised below.

- **THE DEVELOPMENT SITE**  
Overview of the site & project
- **PROJECT DEVELOPMENT**  
The approach to project development
- **WORKING WITH THE COMMUNITY**  
Our approach to community benefits
- **PROJECT TIMELINE**
- **FEEDBACK & NEXT STEPS**  
How to provide feedback & future feedback opportunities
- **WHO IS CLYDE SOUTH ENERGY PARK LIMITED?**  
Overview of the developer
- **OUR M74 CORRIDOR STRATEGY**  
Overview of Renewco's projects in the wider area

Scan QR code to access  
the project website







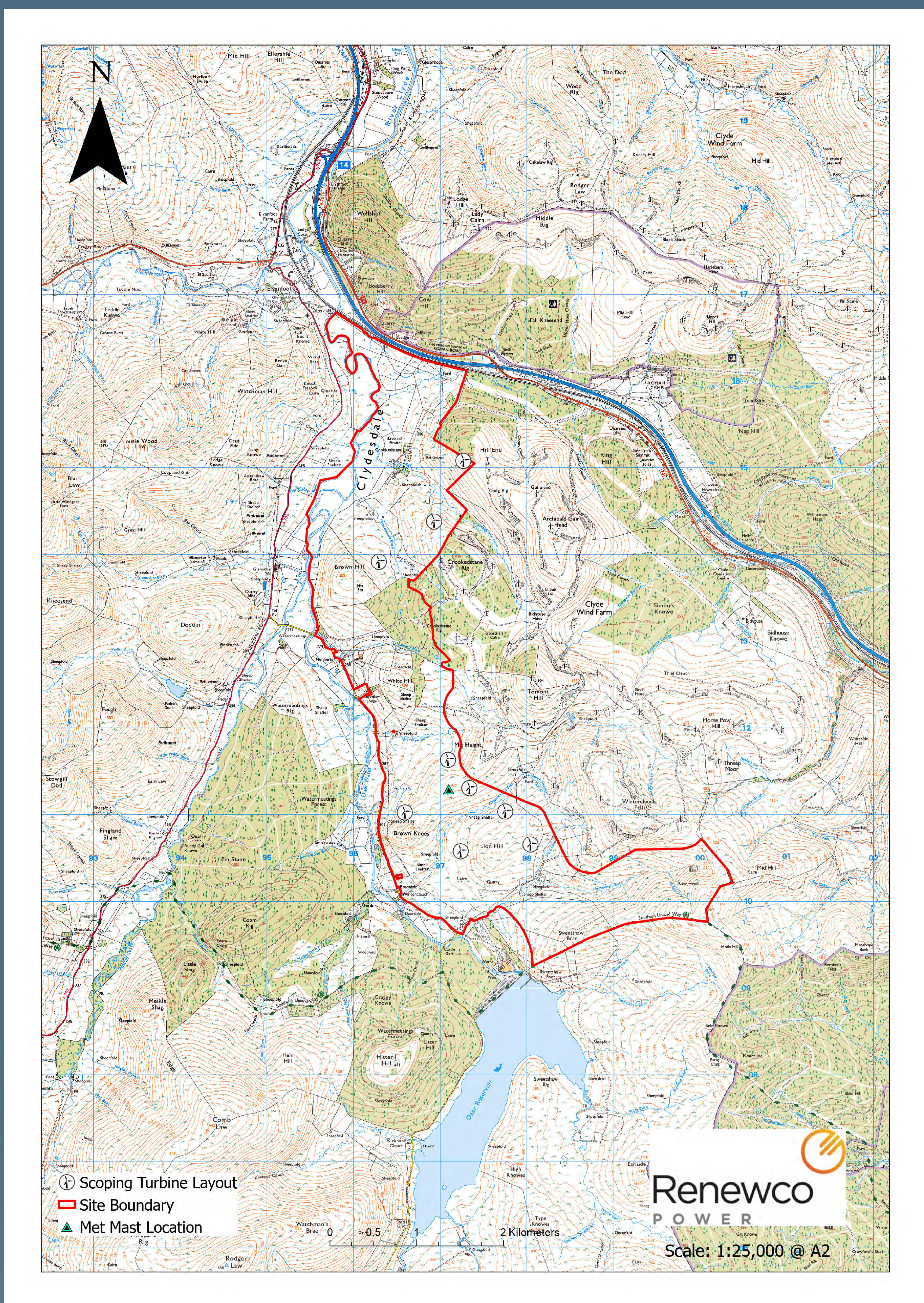
# Renewco

## P O W E R

## SITE LOCATION

The 'Site' covers an area of approximately 1,059 hectares (ha) to the southeast of Elvanfoot and immediately south of the A74(M) Motorway and West Coast Main Railway Line within the Lowther Hills.

The Site includes the sites of the consented, but not built, Crookedstane and Lion Hill wind farms and is within the administrative boundary of South Lanarkshire Council.







# Renewco

## P O W E R

### PROPOSED DEVELOPMENT

The project is at the early stages of development and at this stage is anticipated to include:

- 9 wind turbines up to 180 m in height to blade tip
- Battery Energy Storage System BESS), (approximately 50 MW capacity)
- Ground mounted solar panels (approximately 45 MW)
- Onsite substation
- Construction compound, laydown areas and borrow pits
- Vehicular access from the public road network (route to be confirmed)
- Habitat enhancement and management

The project has a contracted grid connection to the Redshaw Substation, approximately 15 km north-west of the turbine array of the project, though the final grid connection location may change through reformed grid connection processes. The grid connection will be subject to a separate consent application by Scottish Power Energy Networks (SPEN).

It is anticipated that Clyde South will come forward during or after the decommissioning of the neighbouring Clyde Wind Farm.

A request for an Environmental Impact Assessment (EIA) Scoping Opinion from Scottish Ministers has been submitted. This seeks a view from Scottish Ministers, with input from relevant authorities, on which environmental issues should be addressed by the EIA which will guide the ongoing development of the project. The findings will be reported in an EIA Report which will form part of the Section 36 application for development consent.



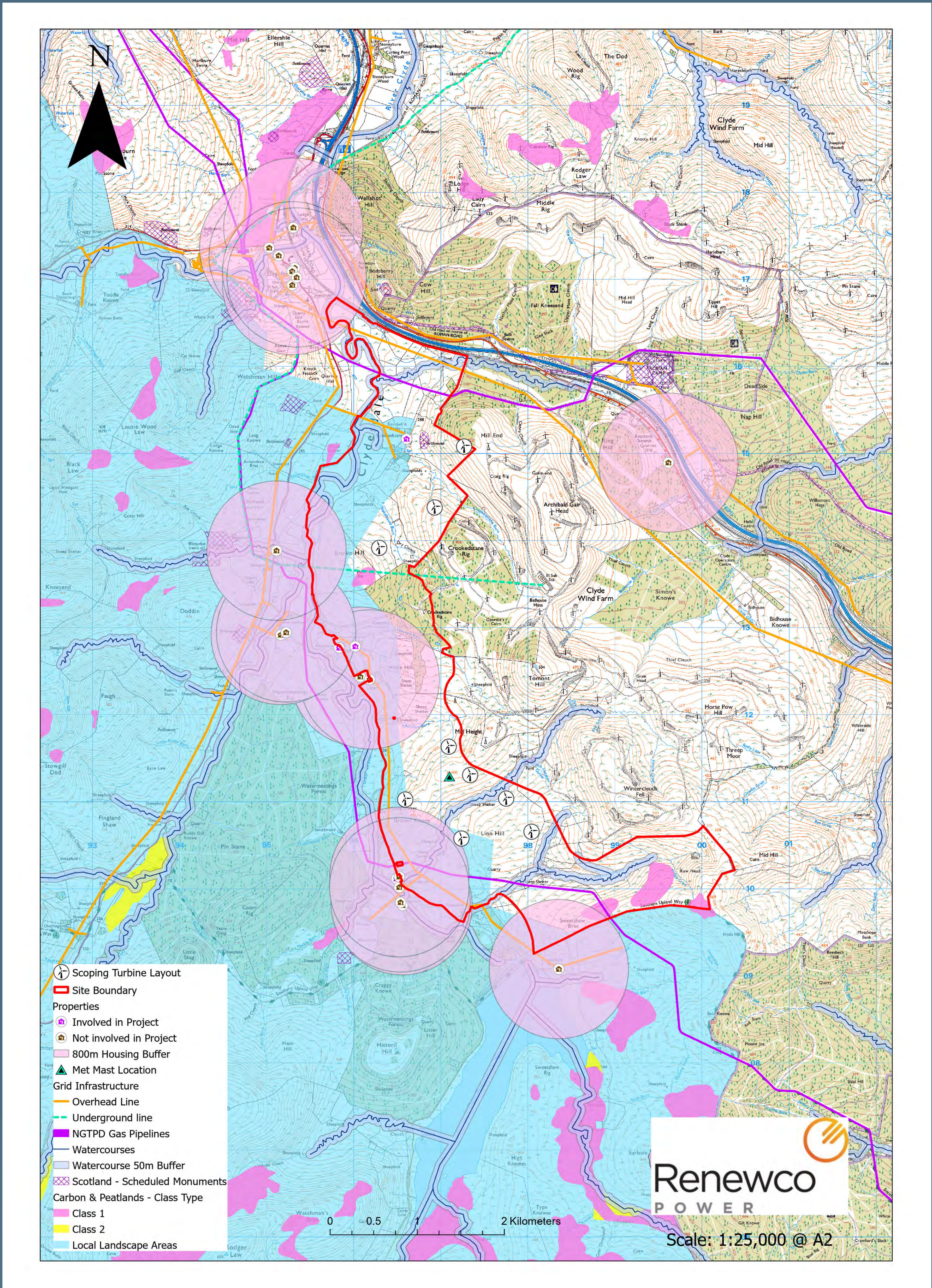




# Renewco

P O W E R

## PROJECT DEVELOPMENT



The current layout of the Clyde South Energy Park has been developed based on an evaluation of site planning and environmental constraints, including a landscape and visual appraisal and a review of publicly available environmental information for the consented Crookedstane and Lion Hill wind farms.







# Renewco

## P O W E R

### PROJECT DEVELOPMENT

Some key next steps to prepare for a Section 36 consent application are to:

- address comments submitted as part of the public consultation process;
- seek planning permission for, and erect, a temporary met mast to gather detailed wind resource data
- carry out further environmental surveys – including detailed peat surveys;
- further develop the turbine layout in response to consultee feedback and environmental sensitivities including:
  - the spatial extent and depth of peat;
  - key views from surrounding settlements, landmark hills and transport corridors;
  - the settings of designated cultural heritage assets;
  - the findings of noise modelling;
  - water supply sources;
  - sensitive ecological habitats;
  - watercourses and associated fisheries, riverine mammals and invertebrates; and
  - both breeding and non-breeding birds, including consideration of disturbance and collision risk.
- confirm the location and develop the layout of the proposed ground mounted solar panels, in response to environmental sensitivities;
- design of track layout, selection of borrow pit search areas, confirmation of substation and BESS location, confirmation of access routes, and identification of suitable construction compound locations;
- complete the detailed assessment of the impact of the final layout of the development on environmental receptors which will be reported in an EIA Report.







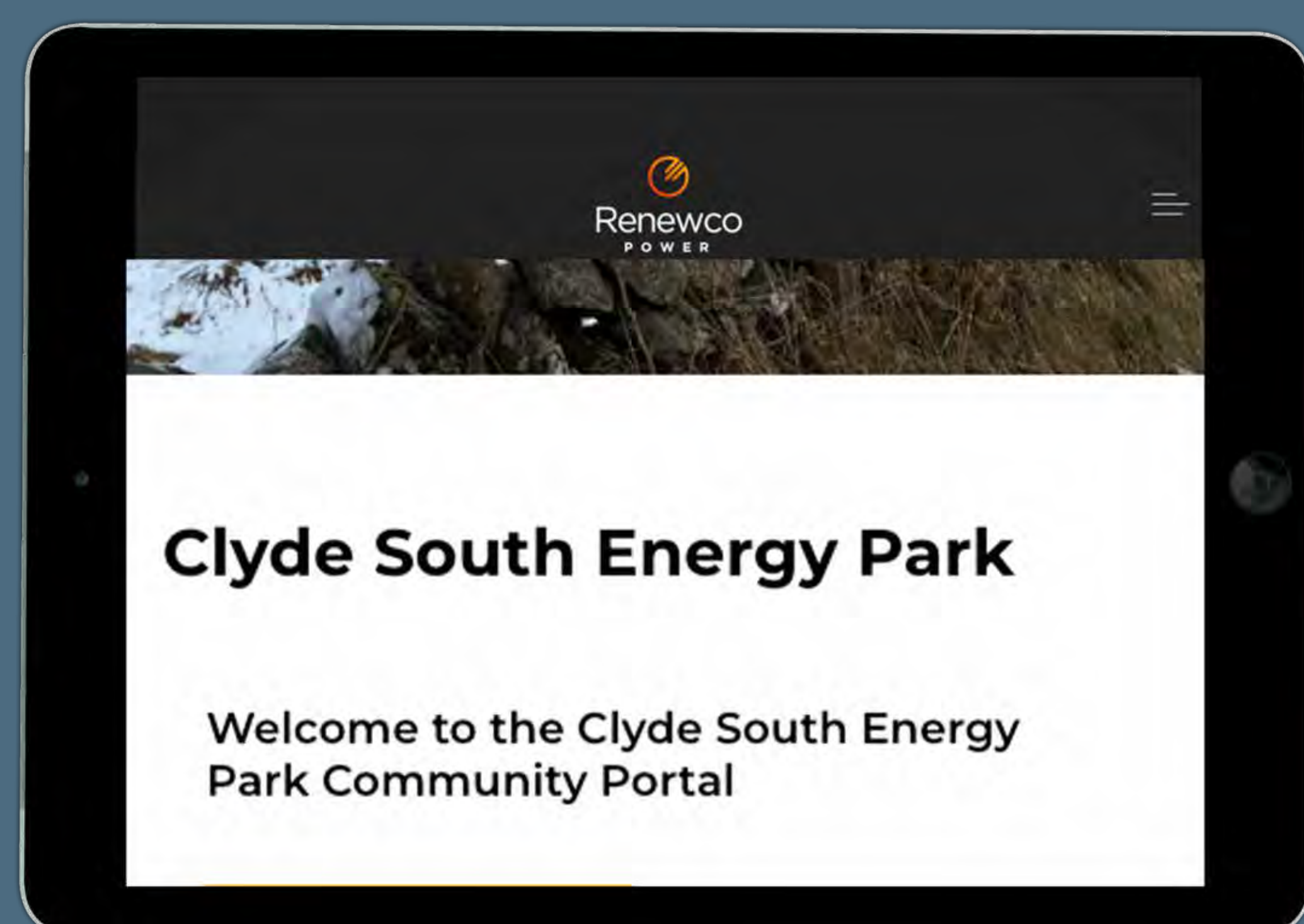
# Renewco

## P O W E R

### WORKING WITH THE COMMUNITY

Clyde South Energy Park will provide a range of benefits for the local community, including a fund which will deliver direct investment into community projects and initiatives. The fund will reflect Scottish Government best practice guidance. For example, should the wind aspect of the development have an installed capacity of 55.8 MW and the solar element have an installed capacity of 45 MW, the Proposed Development would provide a minimum of £297,000. Additional funding would be provided in relation to the solar element of the project. To guide this investment to the most appropriate projects and initiatives, seven high-level investment priorities have been identified, as follows:

- education and skills;
- health and wellbeing;
- economy and jobs;
- environment;
- culture and heritage;
- facilities and amenities; and
- transport



In advance of the Proposed Development being delivered, a Small Grants Fund of £5,000 is being launched to help support local initiatives and test a new engagement platform, Assetface. The Small Grants Fund launched for the nearby M74 West, Watchman and Ravengill projects have already allocated £15,000 to projects in the local area. The Assetface platform has been developed by software developers BizGive, and will allow you to submit your ideas on the kinds of projects and initiatives that would benefit the local community. You can also highlight businesses that could benefit from expenditure associated with delivering Clyde South Energy Park. Your feedback will inform the development of a Community Benefit Agreement which will be developed ahead of the determination of the S36 application. Renewco Power is already developing a Community Benefit Agreement for M74 West to this timeline.

Scan QR code to access  
the project website





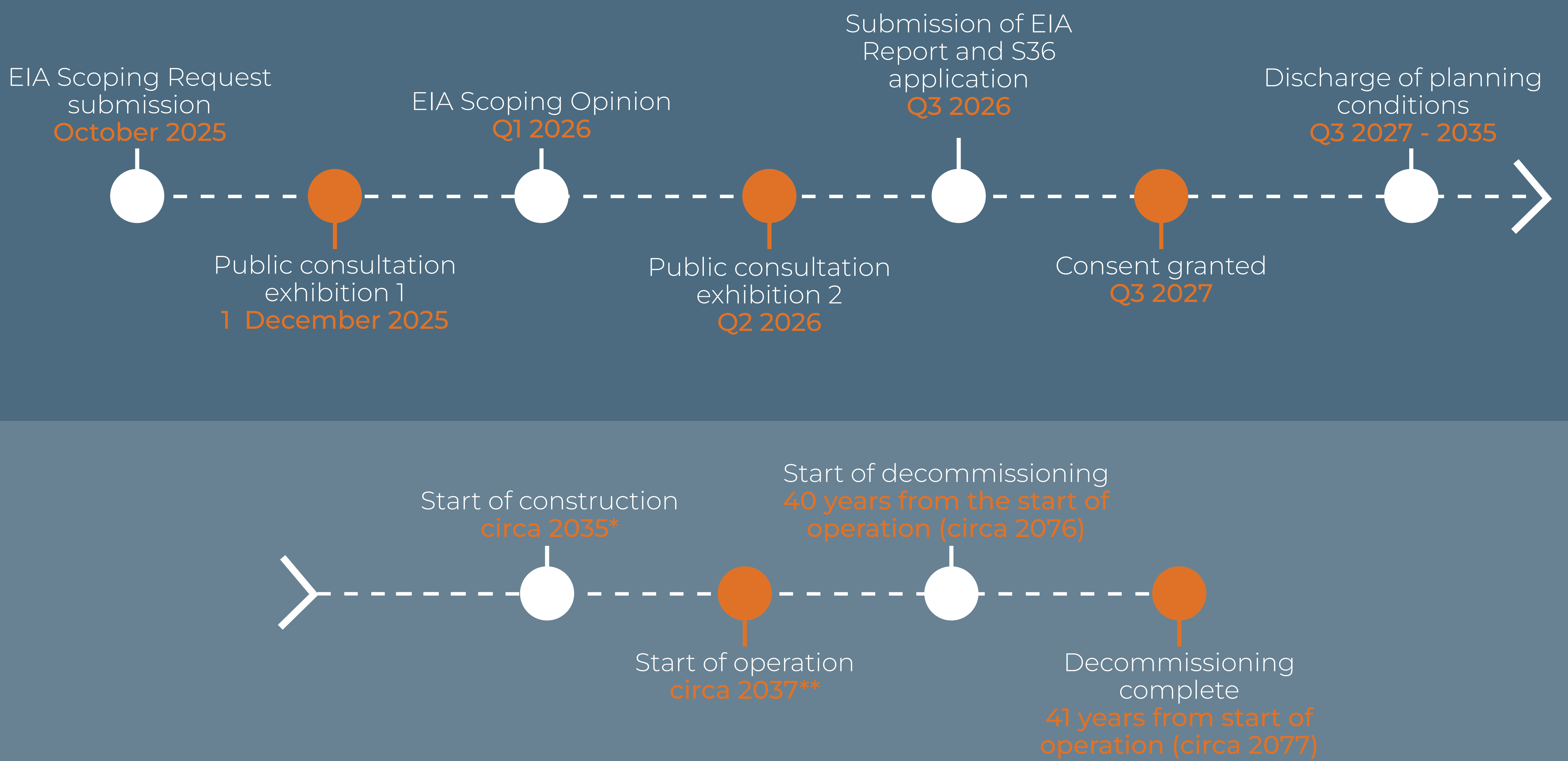


# Renewco

## P O W E R

### PROJECT TIMELINE

Clyde South Energy Park will have a generating capacity of >50 MW and so will require consent under Section 36 of the Electricity Act 1989. This consenting process is administered by Scottish Ministers through the Energy Consents Unit (ECU) of the Scottish Government. The project requires an Environmental Impact Assessment (EIA), and this process will strongly influence the ongoing design work. The EIA process will result in an EIA Report which will document the findings of the assessments completed, provide environmental information for the project, and form a key element of the Section 36 consent application.



\* Timing expected to be relative to decommissioning timescale of turbines in adjacent Clyde Wind farm.

\*\* Current grid connection agreement is to connect at Redshaw in 2037.







# Renewco

## P O W E R

## YOUR FEEDBACK

To help us take your views into account in the development of the Clyde South Energy Park, including the community benefit package, we would appreciate if you could provide feedback via our AssetFace site. You can also use the AssetFace platform to apply for funding for local initiatives from the Clyde South Small Grants Fund.



Scan QR code to access  
the project website



Alternatively, we have feedback forms available for you to complete and hand to a member of the project team.

We would appreciate if you could provide feedback by **18 January 2026**.

## NEXT STEPS

A further community engagement event will take place before the S36 application is submitted, where we will provide further detail on the Proposed Development including how feedback from this event and input from South Lanarkshire Council, SEPA, NatureScot, Historic Environment Scotland and others has been taken into account. The project team will also engage with community bodies during the intervening period.

### CONTACT THE PROJECT TEAM:

CLYDESOUTH@RENEWCOPOWER.COM  
WWW.RENEWCOPOWER.COM







# Renewco

## P O W E R

### WHO IS CLYDE SOUTH ENERGY PARK?

Clyde South Energy Park Ltd is a wholly owned subsidiary of Renewco Power Ltd. Established in Scotland in 2021, Renewco Power was formed by a highly experienced team of entrepreneurs and renewable sector specialists. Our team have been involved in deploying more than 10GW of renewable power in over 50 countries and have built successful companies in solar and wind power, creating meaningful benefits for local communities across Scotland, the wider UK and Europe. Renewco Power brings together significant development, technical, project structuring, construction and financing expertise across all renewable technologies.

Renewco's head office is in Glasgow and it has a presence across the UK, Spain and Italy and employs ~40 professionals. The company is owned by Corran Environmental, a fund advised and managed by Corran Capital.

*Our aim with all of our projects is to maximise the renewable potential deliverable on a site while minimising impacts to land and the surrounding community. Irrespective of the technology our relationships with the community are critical to ensure we make a lasting positive impact, which is why we would welcome any and all feedback as part of this consultation.*







# Renewco

## P O W E R

## OUR M74 CORRIDOR STRATEGY

Clyde South Energy Park forms part of Renewco's wider strategy to deliver new renewable energy assets in the vicinity of the M74 motorway. We consider that there are several strategic advantages to development in this area, including:

- access to the 400 kV ZV Overhead Line;
- proximity to the motorway network for the delivery of components to site and access to labour;
- consistently high wind speeds which will enable the export of large amounts of renewable energy to the grid;
- low population density which means that impacts on the amenity of householders, through issues such as noise and visual impacts, can be minimised;
- the large scale character of the landscape which is generally suitable to accommodate large modern, commercial wind turbines;
- the projects will create a cluster of developments in the area along the M74 corridor, considered to be an appropriate location, which allows the most sensitive landscapes and habitats elsewhere to be protected whilst facilitating the pooling of investment to provide strategic benefits for local communities;
- more broadly, developments in this area will help deliver Scottish and UK Government targets for the deployment of renewable energy and reducing carbon emissions, with Clyde South Energy Park alone expected to produce enough energy to power the equivalent of approximately 66,554 homes.

