

Legend

- Site Boundary
- Turbine
- Infrastructure - Permanent
- Infrastructure - Temporary
- Proposed Earthworks
- Target Notes
- NVC Survey Extent

Phase 1 Habitat (Code)

- Unimproved Acid Grassland (B1.1)
- Unimproved Acid Grassland/ Marsh/Marshy Grassland Mosaic (B1.1/B5)
- Unimproved Acid Grassland/Non-Ruderal Mosaic (B1.1/C3.2)
- Unimproved Acid Grassland/Blanket Bog Mosaic (B1.1/E1.6.1)
- Marsh/Marshy Grassland (B5)
- Marsh/Marshy Grassland/Wet Dwarf Shrub Heath Mosaic (B5/D2)
- Marsh/Marshy Grassland /Wet Heath/Acid Grassland Mosaic Mosaic (B5/D6)
- Marsh/Marshy Grassland/Acid Neutral Flush Mosaic (B5/E2.1)
- Non-Ruderal (C3.2)
- Wet Dwarf Shrub Heath (D2)
- Wet Dwarf Shrub Heath/Acid Neutral Flush Mosaic (D2/E2.1)
- Wet Heath/Acid Grassland Mosaic (D6)
- Wet Heath/Acid Grassland Mosaic/Blanket Bog Mosaic (D6/E1.6.1)
- Blanket Bog (E1.6.1)
- Wet Modified Bog (E1.7)
- Acid Neutral Flush (E2.1)
- Acid/Neutral Exposure (1.4.1)

Note: NVC communities present within habitat polygons are detailed on the figure where these areas fall within the Site Boundary

Figure Title
National Vegetation Classification (NVC) Survey Area and Results

Project Name
Watchman Energy Park

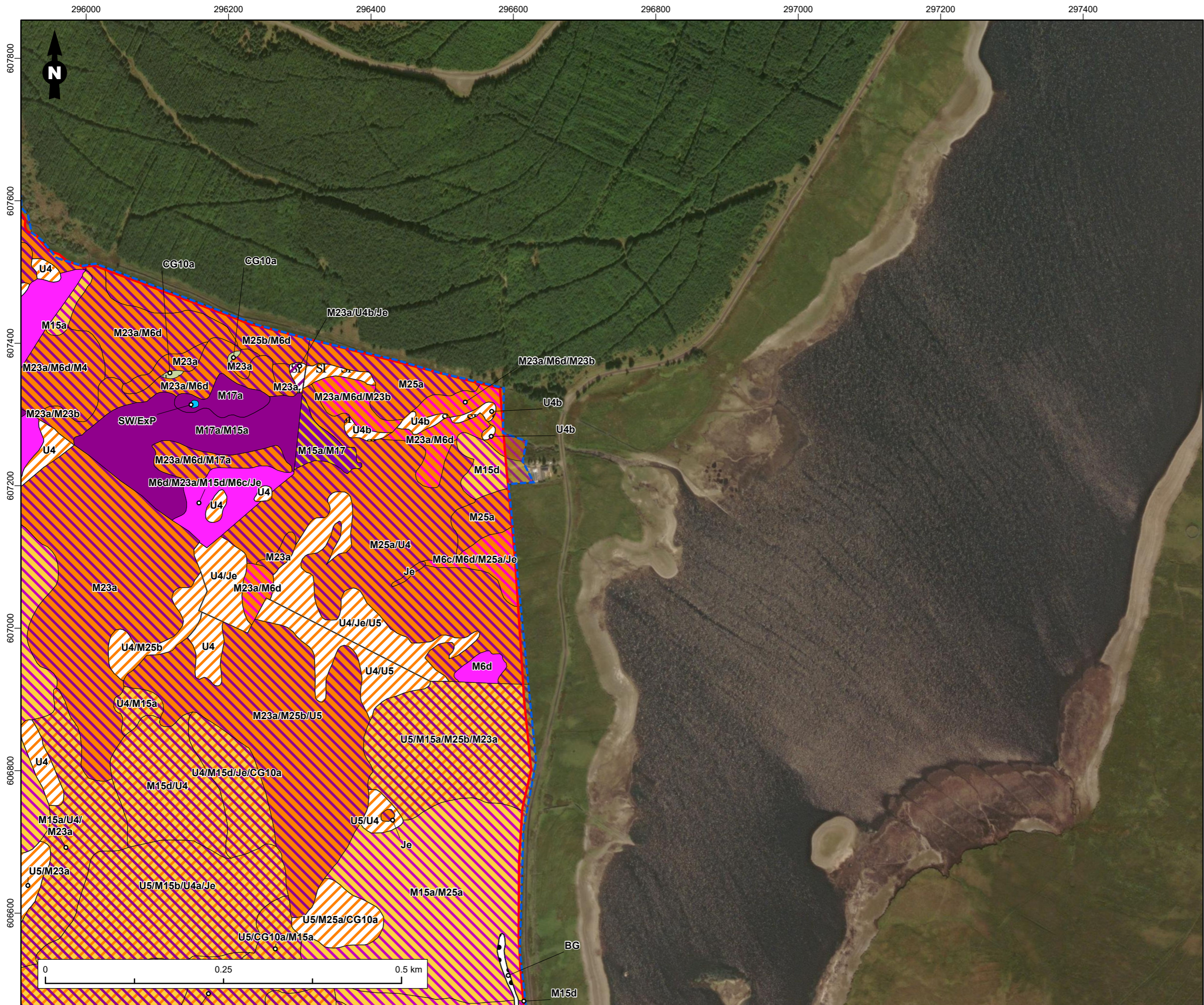
Project No./File ID
 1620016964 / REH2024N01805

Date	Figure No.	Revision
February 2026	6.3.9	2.0

Prepared By	Scale
KS	1:5,000 @A3

Client
Watchman Energy Park Ltd





Legend

- Site Boundary
- NVC Survey Extent

Phase 1 Habitat (Code)

- Unimproved Acid Grassland (B1.1)
- Semi-Improved Acid Grassland (B1.2)
- Semi-Improved Acid Grassland/ Marsh/ Marshy Grassland Mosaic (B1.2/B5)
- Unimproved Calcareous Grassland (B3.1)
- Marsh/Marshy Grassland (B5)
- Marsh/Marshy Grassland/Acid Neutral Flush Mosaic (B5/E2.1)
- Wet Dwarf Shrub Heath (D2)
- Wet Dwarf Shrub Heath/Blanket Bog Mosaic (D2/E1.6.1)
- Wet Heath/Acid Grassland Mosaic (D6)
- Blanket Bog (E1.6.1)
- Acid Neutral Flush (E2.1)
- Standing Water (G1)
- Bare Ground (J4)

Note: NVC communities present within habitat polygons are detailed on the figure where these areas fall within the Site Boundary

Figure Title
National Vegetation Classification (NVC) Survey Area and Results

Project Name
Watchman Energy Park

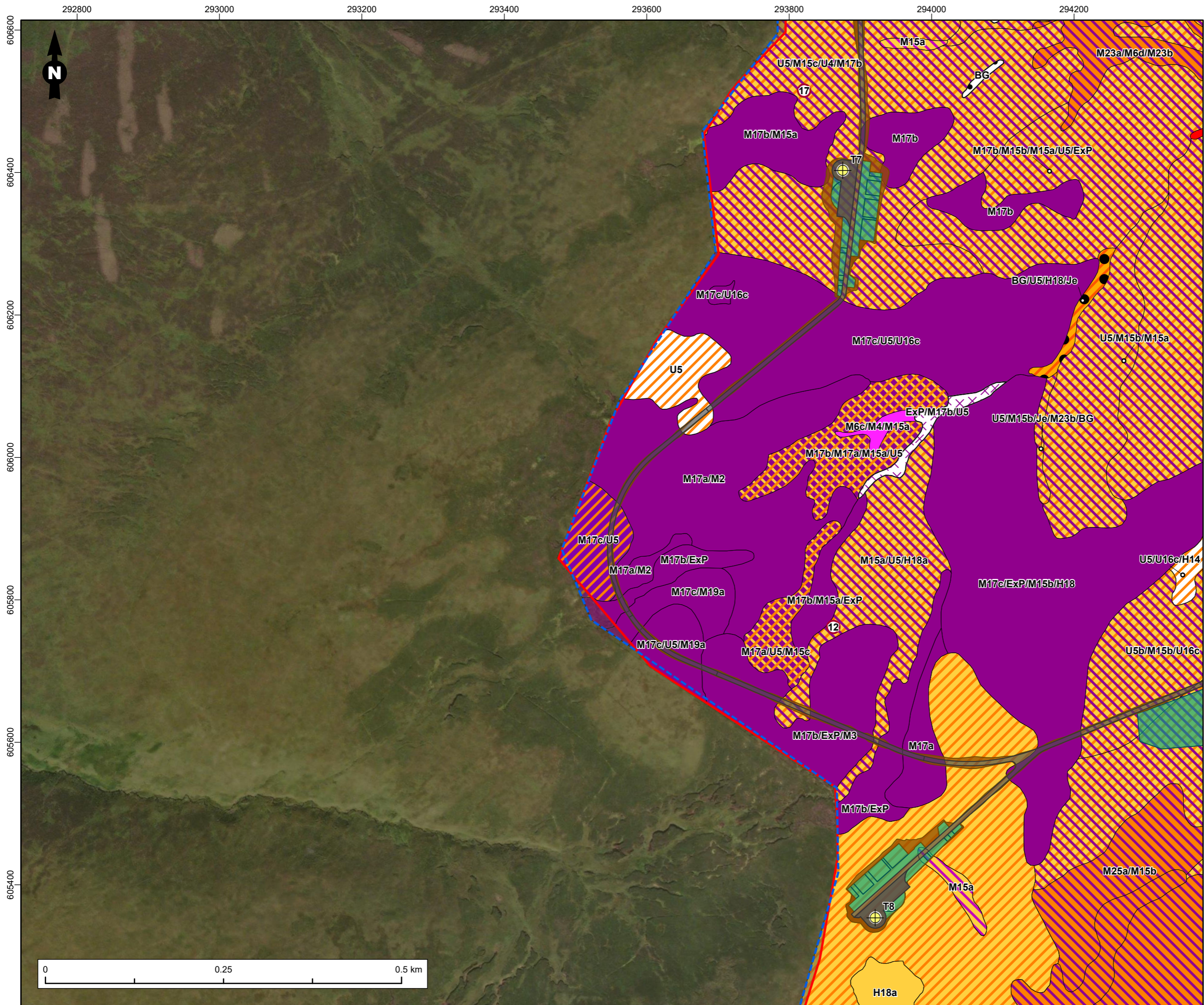
Project No./File ID
 1620016964 / REH2024N01805

Date	Figure No.	Revision
February 2026	6.3.10	2.0

Prepared By	Scale
KS	1:5,000 @A3

Client
Watchman Energy Park Ltd





Legend

- Site Boundary
- Turbine
- Infrastructure - Permanent
- Infrastructure - Temporary
- Proposed Earthworks
- Target Notes
- NVC Survey Extent

Phase 1 Habitat (Code)

- Unimproved Acid Grassland (B1.1)
- Unimproved Acid Grassland/Blanket Bog Mosaic (B1.1/E1.6.1)
- Marsh/Marshy Grassland (B5)
- Acid Dry Dwarf Shrub Heath (D1.1)
- Wet Dwarf Shrub Heath (D2)
- Dry Heath/Acid Grassland Mosaic (D5)
- Dry Heath/Acid Grassland Mosaic/Bare Ground Mosaic (D5/J4)
- Wet Heath/Acid Grassland Mosaic (D6)
- Wet Heath/Acid Grassland Mosaic/Blanket Bog Mosaic (D6/E1.6.1)
- Blanket Bog (E1.6.1)
- Acid Neutral Flush (E2.1)
- Bare Peat (E4)
- Acid/Neutral Exposure (1.4.1)
- Bare Ground (J4)

Note: NVC communities present within habitat polygons are detailed on the figure where these areas fall within the Site Boundary

Figure Title
National Vegetation Classification (NVC) Survey Area and Results

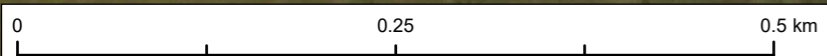
Project Name
Watchman Energy Park

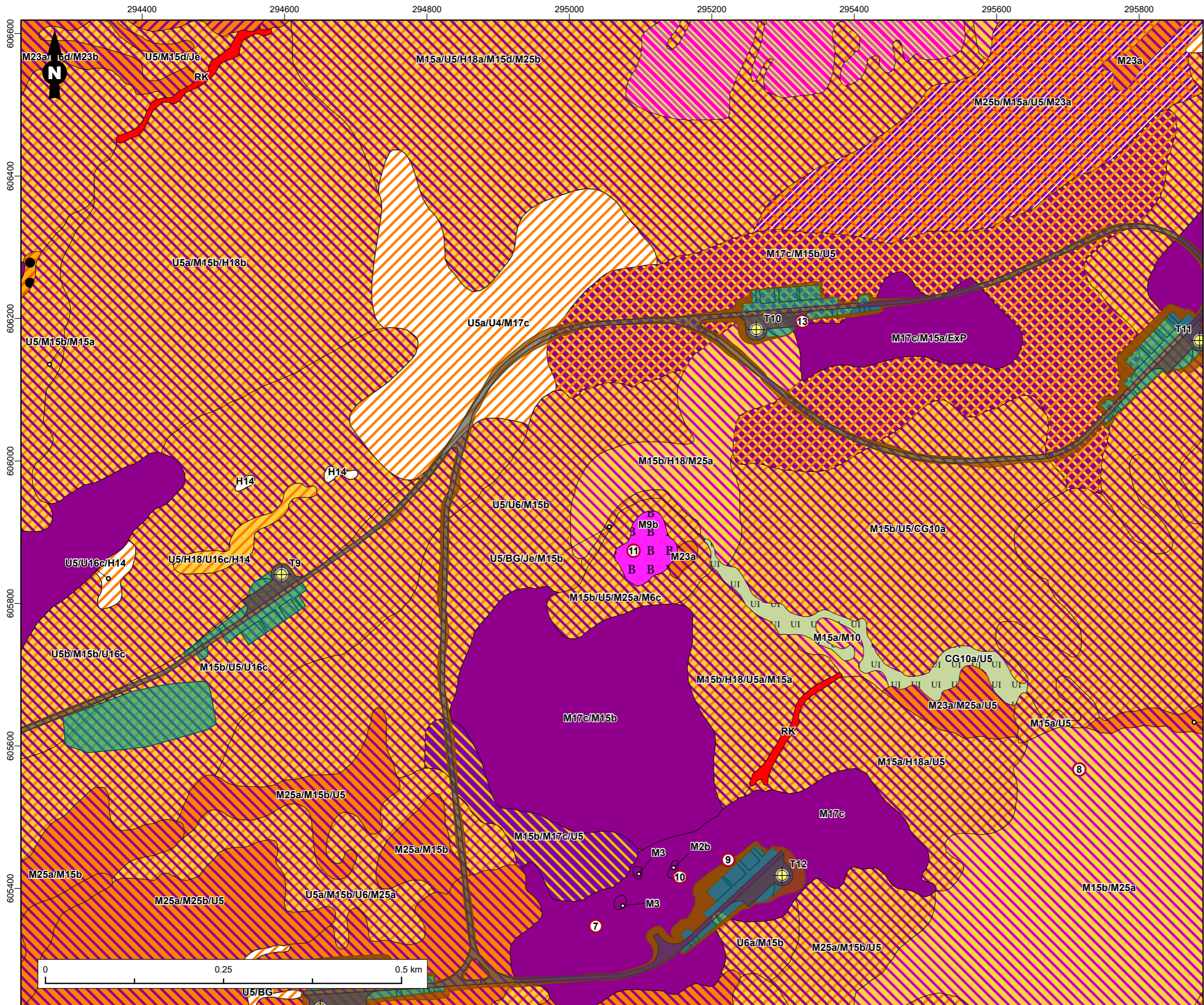
Project No./File ID
1620016964 / REH2024N01805

Date February 2026	Figure No. 6.3.11	Revision 2.0
------------------------------	-----------------------------	------------------------

Prepared By KS	Scale 1:5,000 @A3
--------------------------	-----------------------------

Client
Watchman Energy Park Ltd





Legend

- Site Boundary
- Turbine
- Infrastructure - Permanent
- Infrastructure - Temporary
- Proposed Earthworks
- Target Notes
- NVC Survey Extent

Phase 1 Habitat (Code)

- Unimproved Acid Grassland (B1.1)
- Unimproved Calcareous Grassland (B3.1)
- Marsh/Marshy Grassland (B5)
- Marsh/Marshy Grassland/Wet Dwarf Shrub Heath Mosaic (B5/D2)
- Marsh/Marshy Grassland /Wet Heath/Acid Grassland Mosaic (B5/D6)
- Wet Dwarf Shrub Heath (D2)
- Wet Dwarf Shrub Heath/Blanket Bog Mosaic (D2/E1.6.1)
- Wet Dwarf Shrub Heath/Acid Neutral Flush Mosaic (D2/E2.1)
- Lichen/Bryophyte Heath (D3)
- Dry Heath/Acid Grassland Mosaic (D5)
- Dry Heath/Acid Grassland Mosaic/Bare Ground Mosaic (D5/J4)
- Wet Heath/Acid Grassland Mosaic (D6)
- Wet Heath/Acid Grassland Mosaic/Blanket Bog Mosaic (D6/E1.6.1)
- Blanket Bog (E1.6.1)
- Basic Flush (E2.2)
- Acid/Neutral Exposure (1.4.1)

Note: NVC communities present within habitat polygons are detailed on the figure where these areas fall within the Site Boundary

Figure Title
National Vegetation Classification (NVC) Survey Area and Results

Project Name
Watchman Energy Park

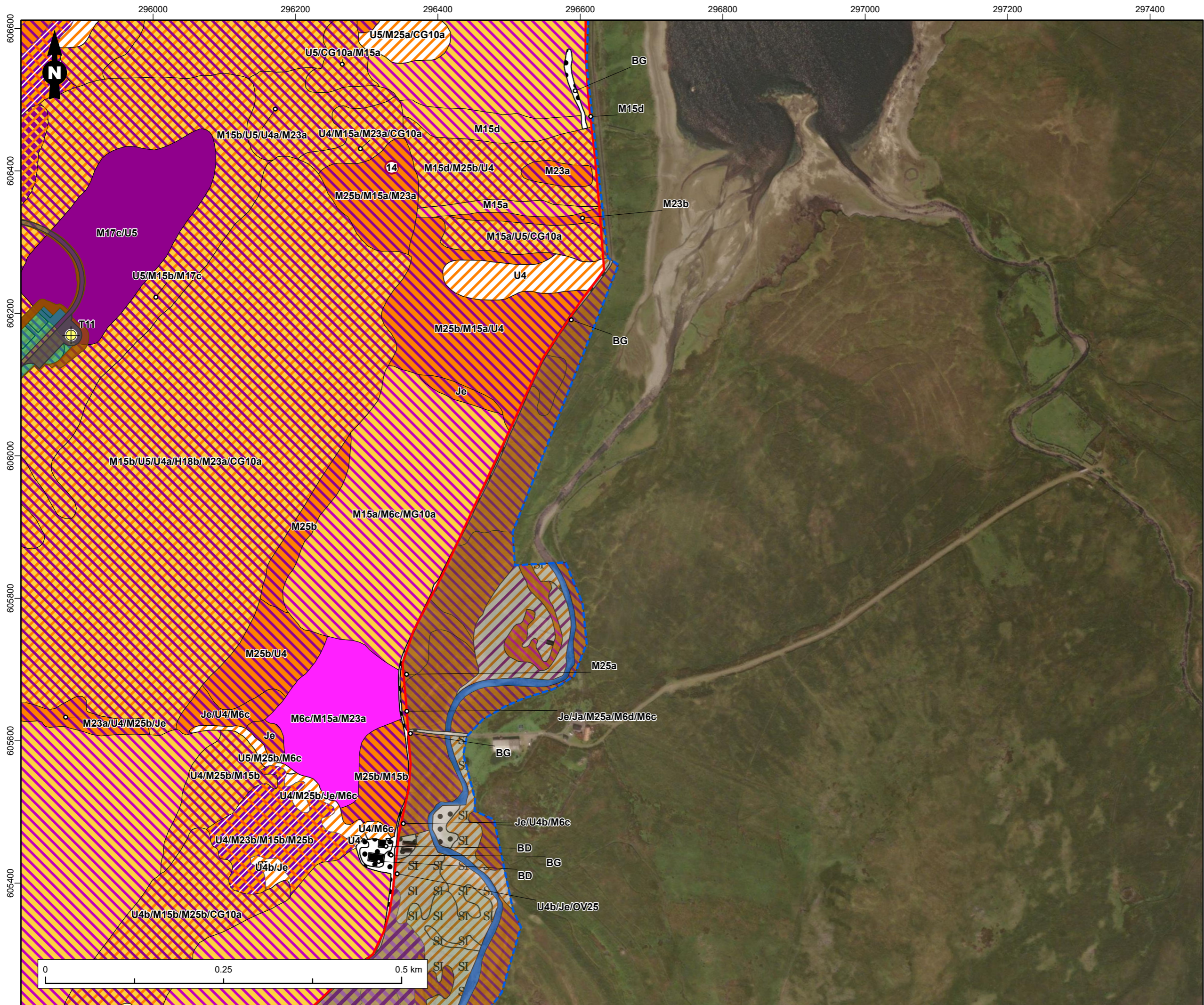
Project No./File ID
 1620016964 / REH2024N01805

Date	Figure No.	Revision
February 2026	6.3.12	2.0

Prepared By	Scale
KS	1:5,000 @A3

Client
Watchman Energy Park Ltd





Legend

- Site Boundary
- Turbine
- Infrastructure - Permanent
- Infrastructure - Temporary
- Proposed Earthworks
- Target Notes
- NVC Survey Extent

Phase 1 Habitat (Code)

- Unimproved Acid Grassland (B1.1)
- Unimproved Acid Grassland/Unimproved Calcareous Grassland Mosaic (B1.1/B3.1)
- Unimproved Acid Grassland/ Marsh/Marshy Grassland Mosaic (B1.1/B5)
- Semi-Improved Acid Grassland (B1.2)
- Marsh/Marshy Grassland (B5)
- Marsh/Marshy Grassland /Wet Heath/Acid Grassland Mosaic (B5/D6)
- Marsh/Marshy Grassland/Acid Neutral Flush Mosaic (B5/E2.1)
- Wet Dwarf Shrub Heath (D2)
- Wet Dwarf Shrub Heath/Wet Modified Bog Mosaic (D2/E1.7)
- Wet Heath/Acid Grassland Mosaic (D6)
- Wet Heath/Acid Grassland Mosaic/Blanket Bog Mosaic (D6/E1.6.1)
- Blanket Bog (E1.6.1)
- Acid Neutral Flush (E2.1)
- Running Water (G2)
- Building (J3.6)
- Bare Ground (J4)

Note: NVC communities present within habitat polygons are detailed on the figure where these areas fall within the Site Boundary

Figure Title
National Vegetation Classification (NVC) Survey Area and Results

Project Name
Watchman Energy Park

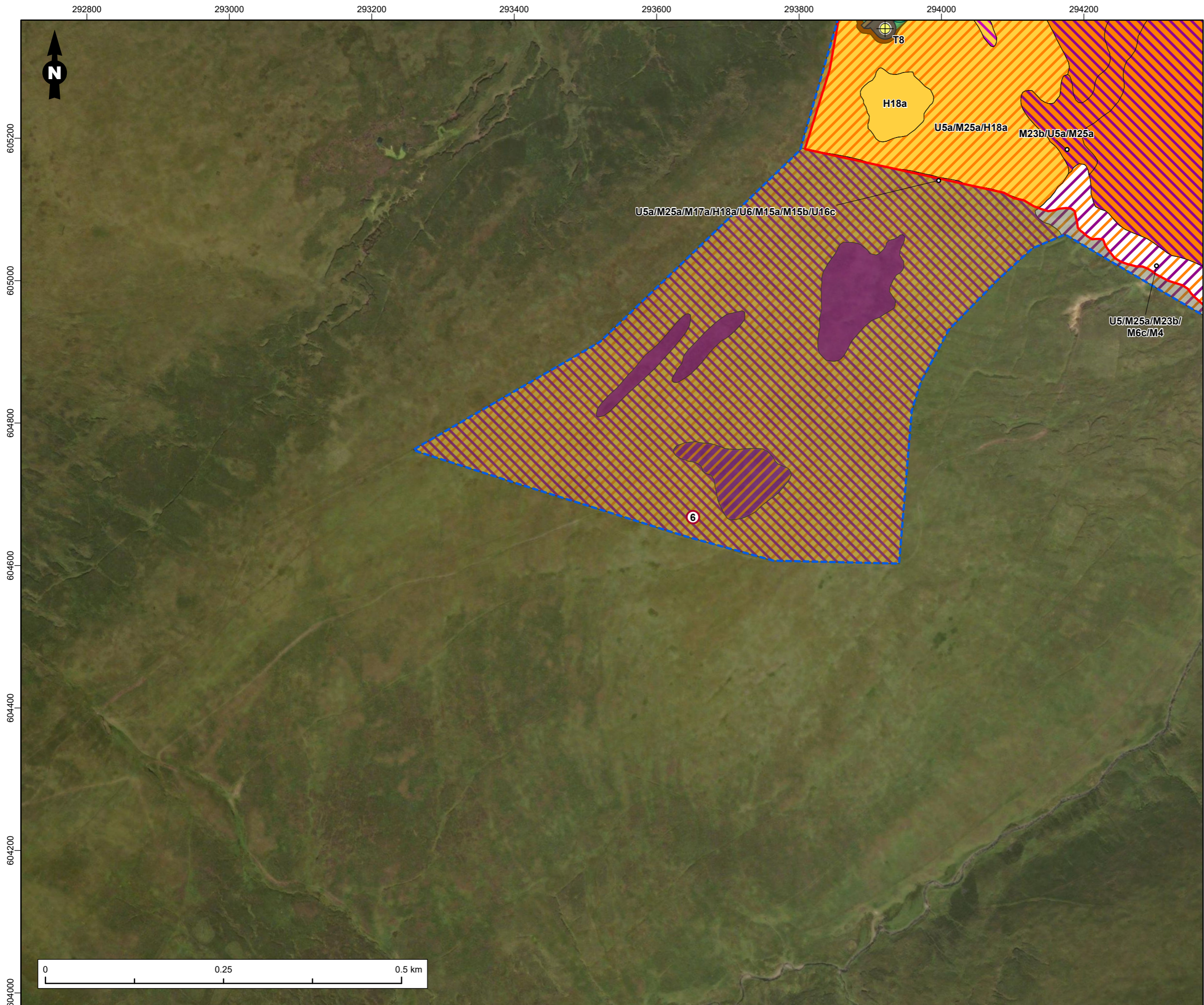
Project No./Filey ID
 1620016964 / REH2024N01805

Date	Figure No.	Revision
February 2026	6.3.13	2.0

Prepared By	Scale
KS	1:5,000 @A3

Client
Watchman Energy Park Ltd





Legend

- Site Boundary
- Turbine
- Infrastructure - Permanent
- Infrastructure - Temporary
- Proposed Earthworks
- Target Notes
- NVC Survey Extent

Phase 1 Habitat (Code)

- Unimproved Acid Grassland/ Marsh/Marshy Grassland Mosaic (B1.1/B5)
- Unimproved Acid Grassland/Blanket Bog Mosaic (B1.1/E1.6.1)
- Marsh/Marshy Grassland (B5)
- Acid Dry Dwarf Shrub Heath (D1.1)
- Wet Dwarf Shrub Heath (D2)
- Dry Heath/Acid Grassland Mosaic (D5)
- Wet Heath/Acid Grassland Mosaic (D6)
- Blanket Bog (E1.6.1)

Note: NVC communities present within habitat polygons are detailed on the figure where these areas fall within the Site Boundary

Figure Title
National Vegetation Classification (NVC) Survey Area and Results

Project Name
Watchman Energy Park

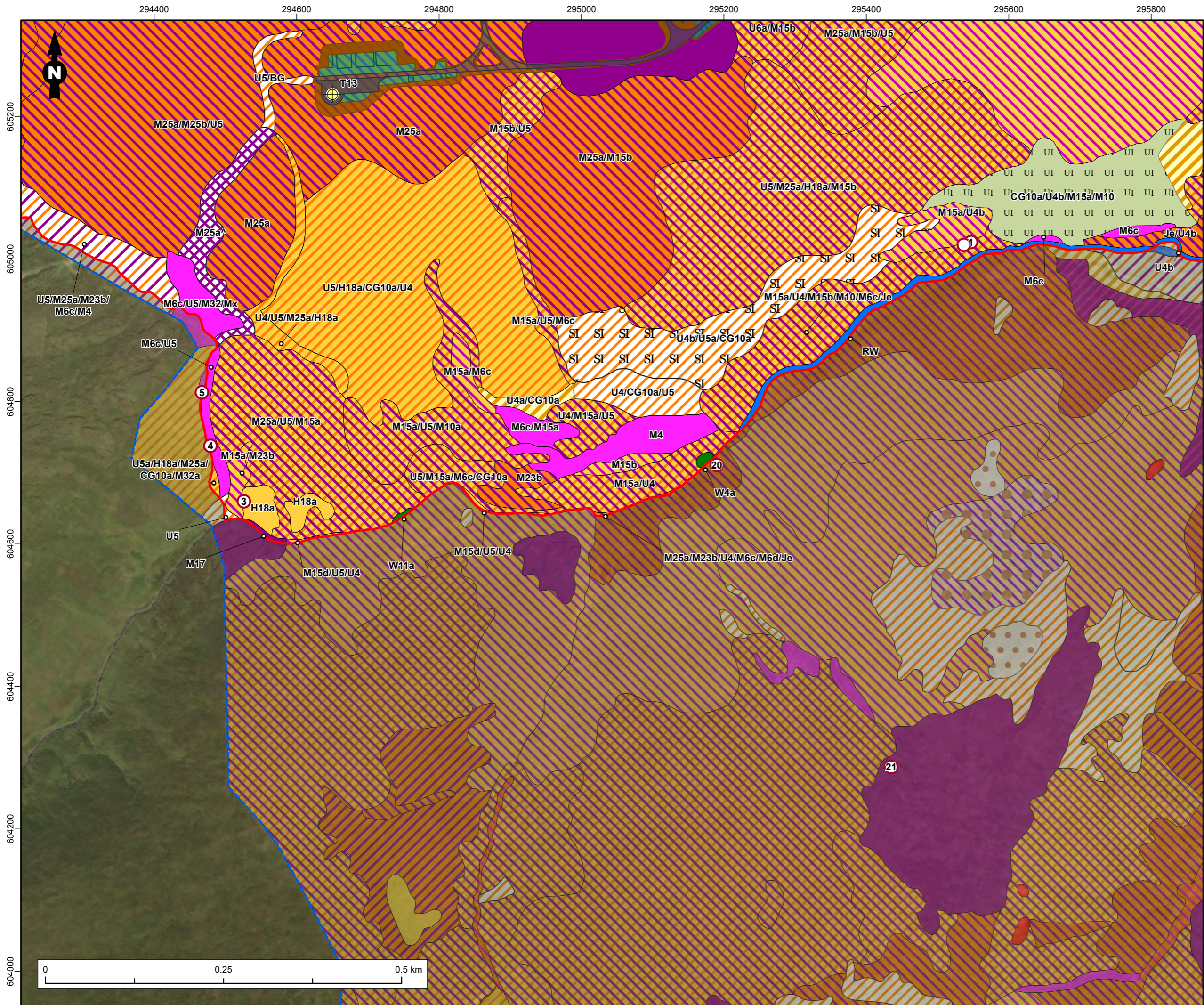
Project No./File ID
 1620016964 / REH2024N01805

Date	Figure No.	Revision
February 2026	6.3.14	2.0

Prepared By	Scale
KS	1:5,000 @A3

Client
Watchman Energy Park Ltd





Legend

- Site Boundary
- Turbine
- Infrastructure - Permanent
- Infrastructure - Temporary
- Proposed Earthworks
- Target Notes
- NVC Survey Extent

Phase 1 Habitat (Code)

- Broad-Leaved Semi-Natural Woodland (A1.1.1)
- Unimproved Acid Grassland (B1.1)
- Unimproved Acid Grassland/Unimproved Calcareous Grassland Mosaic (B1.1/B3.1)
- Unimproved Acid Grassland/ Marsh/Marshy Grassland Mosaic (B1.1/B5)
- Semi-Improved Acid Grassland (B1.2)
- Unimproved Calcareous Grassland (B3.1)
- Marsh/Marshy Grassland (B5)
- Marsh/Marshy Grassland/Wet Dwarf Shrub Heath Mosaic (B5/D2)
- Marsh/Marshy Grassland/Acid Neutral Flush Mosaic (B5/E2.1)
- Non-Ruderal (C3.2)
- Non-Ruderal /Wet Dwarf Shrub Heath Mosaic (C3.2/D2)
- Acid Dry Dwarf Shrub Heath (D1.1)
- Wet Dwarf Shrub Heath (D2)
- Dry Heath/Acid Grassland Mosaic (D5)
- Wet Heath/Acid Grassland Mosaic (D6)
- Blanket Bog (E1.6.1)
- Blanket Bog/Wet Modified Bog Mosaic (E1.6.1/E1.7)
- Wet Modified Bog (E1.7)
- Acid Neutral Flush (E2.1)
- Running Water (G2)
- Acid/Neutral Exposure (1.4.1)

Note: NVC communities present within habitat polygons are detailed on the figure where these areas fall within the Site Boundary

Figure Title
National Vegetation Classification (NVC) Survey Area and Results

Project Name
Watchman Energy Park

Project No./File ID
 1620016964 / REH2024N01805

Date	Figure No.	Revision
February 2026	6.3.15	2.0

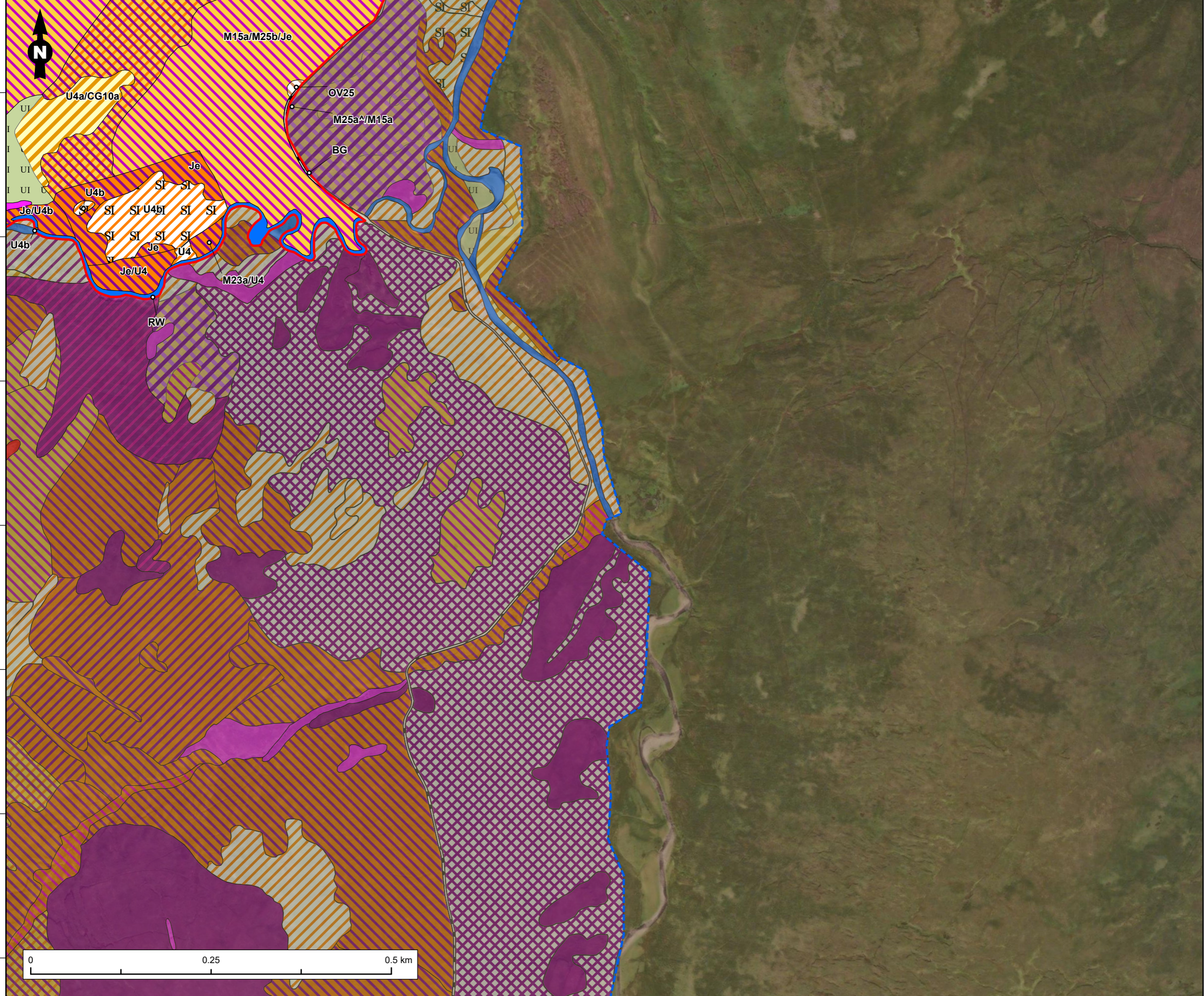
Prepared By	Scale
KS	1:5,000 @A3

Client
Watchman Energy Park Ltd



295800 296000 296200 296400 296600 296800 297000 297200 297400

605200
605000
604800
604600
604400
604200
604000



Legend

- Site Boundary
- NVC Survey Extent

Phase 1 Habitat (Code)

- Unimproved Acid Grassland (B1.1)
- Unimproved Acid Grassland/Unimproved Calcareous Grassland Mosaic (B1.1/B3.1)
- Unimproved Acid Grassland/ Marsh/Marshy Grassland Mosaic (B1.1/B5)
- Semi-Improved Acid Grassland (B1.2)
- Unimproved Calcareous Grassland (B3.1)
- Marsh/Marshy Grassland (B5)
- Marsh/Marshy Grassland/Wet Dwarf Shrub Heath Mosaic (B5/D2)
- Marsh/Marshy Grassland/Acid Neutral Flush Mosaic (B5/E2.1)
- Tall Ruderal (C3.1)
- Wet Dwarf Shrub Heath (D2)
- Wet Dwarf Shrub Heath/Wet Modified Bog Mosaic (D2/E1.7)
- Wet Heath/Acid Grassland Mosaic (D6)
- Blanket Bog (E1.6.1)
- Blanket Bog/Wet Modified Bog Mosaic (E1.6.1/E1.7)
- Wet Modified Bog (E1.7)
- Acid Neutral Flush (E2.1)
- Running Water (G2)
- Acid/Neutral Exposure (1.4.1)
- Bare Ground (J4)

Note: NVC communities present within habitat polygons are detailed on the figure where these areas fall within the Site Boundary

Figure Title
National Vegetation Classification (NVC) Survey Area and Results

Project Name
Watchman Energy Park

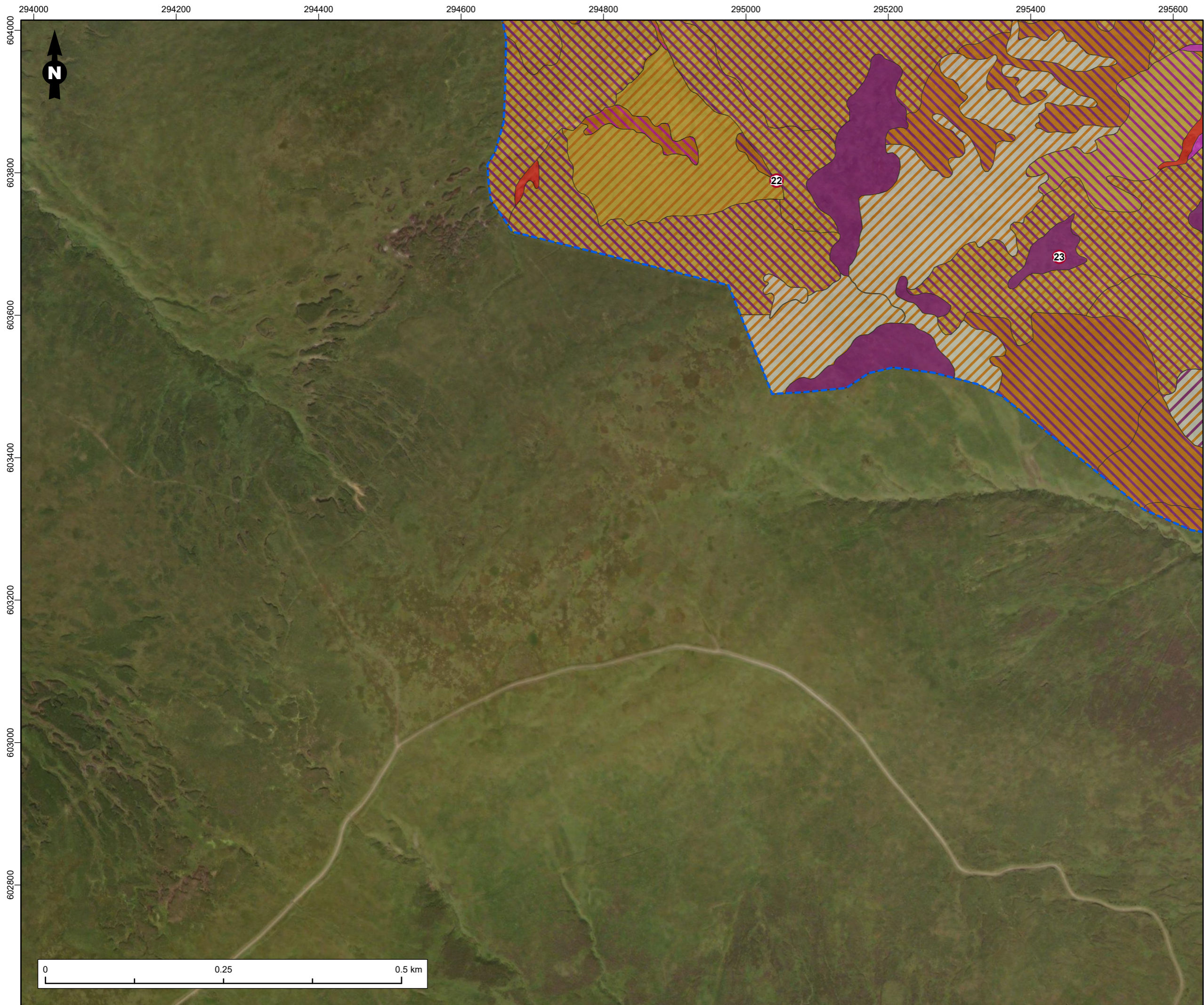
Project No./File ID
1620016964 / REH2024N01805

Date	Figure No.	Revision
February 2026	6.3.16	2.0

Prepared By	Scale
KS	1:5,000 @A3

Client
Watchman Energy Park Ltd





Legend

- Target Notes
- NVC Survey Extent

Phase 1 Habitat (Code)

- Unimproved Acid Grassland (B1.1)
- Unimproved Acid Grassland/ Marsh/Marshy Grassland Mosaic (B1.1/B5)
- Marsh/Marshy Grassland (B5)
- Marsh/Marshy Grassland/Wet Dwarf Shrub Heath Mosaic (B5/D2)
- Marsh/Marshy Grassland/Acid Neutral Flush Mosaic (B5/E2.1)
- Wet Dwarf Shrub Heath (D2)
- Dry Heath/Acid Grassland Mosaic (D5)
- Wet Heath/Acid Grassland Mosaic (D6)
- Blanket Bog (E1.6.1)
- Acid Neutral Flush (E2.1)
- Acid/Neutral Exposure (1.4.1)

Note: NVC communities present within habitat polygons are detailed on the figure where these areas fall within the Site Boundary

Figure Title
National Vegetation Classification (NVC) Survey Area and Results

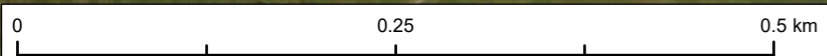
Project Name
Watchman Energy Park

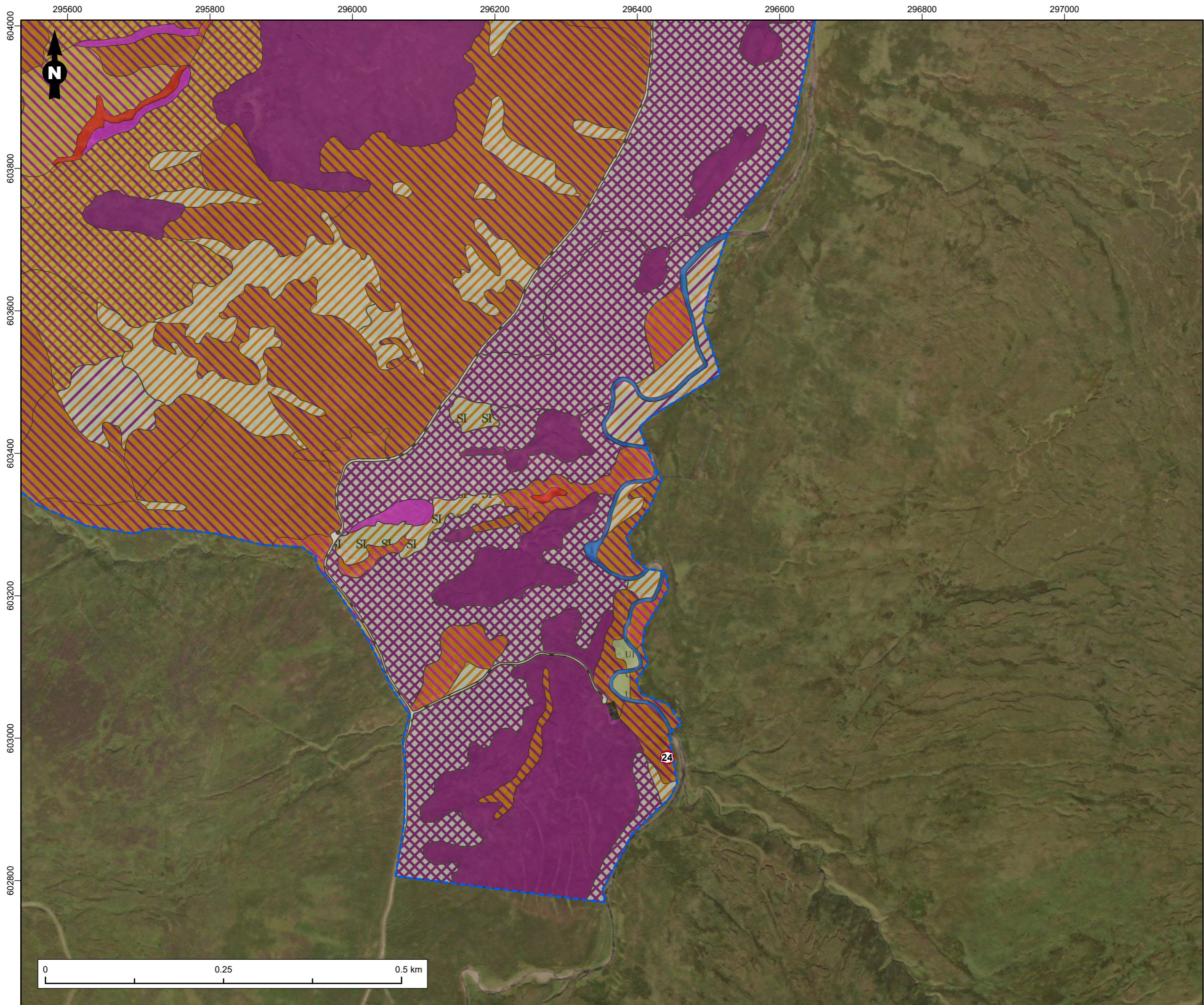
Project No./Filey ID
1620016964 / REH2024N01805

Date	Figure No.	Revision
February 2026	6.3.17	2.0

Prepared By	Scale
KS	1:5,000 @A3

Client
Watchman Energy Park Ltd





Legend

- Target Notes
- NVC Survey Extent

Phase 1 Habitat (Code)

- Unimproved Acid Grassland (B1.1)
- Unimproved Acid Grassland/ Marsh/Marshy Grassland Mosaic (B1.1/B5)
- Semi-Improved Acid Grassland (B1.2)
- Unimproved Calcareous Grassland (B3.1)
- Marsh/Marshy Grassland (B5)
- Marsh/Marshy Grassland/Acid Neutral Flush Mosaic (B5/E2.1)
- Wet Dwarf Shrub Heath (D2)
- Wet Heath/Acid Grassland Mosaic (D6)
- Blanket Bog (E1.6.1)
- Wet Modified Bog (E1.7)
- Acid Neutral Flush (E2.1)
- Running Water (G2)
- Acid/Neutral Exposure (1.4.1)
- Building (J3.6)
- Bare Ground (J4)

Note: NVC communities present within habitat polygons are detailed on the figure where these areas fall within the Site Boundary

Figure Title
National Vegetation Classification (NVC) Survey Area and Results

Project Name
Watchman Energy Park

Project No./File ID
 1620016964 / REH2024N01805

Date	Figure No.	Revision
February 2026	6.3.18	2.0

Prepared By	Scale
KS	1:5,000 @A3

Client
Watchman Energy Park Ltd

