

Legend

- Turbine locations
- Site boundary
- Watercourse
- Land cover within Site boundary (areas not included in Land cover*)
Rounded moorland summits/
Grassland

Land cover*

- Assumed woodland
- Broadleaved, mixed mainly broadleaved
- Conifer, mixed mainly conifer
- Felled
- Grassland
- Ground prep
- Low density
- Windblow
- Young trees

Notes: *National Forest Inventory 2022, updated February 2025

Figure Title
Landscape Features within Site - National Forest Inventory Dataset

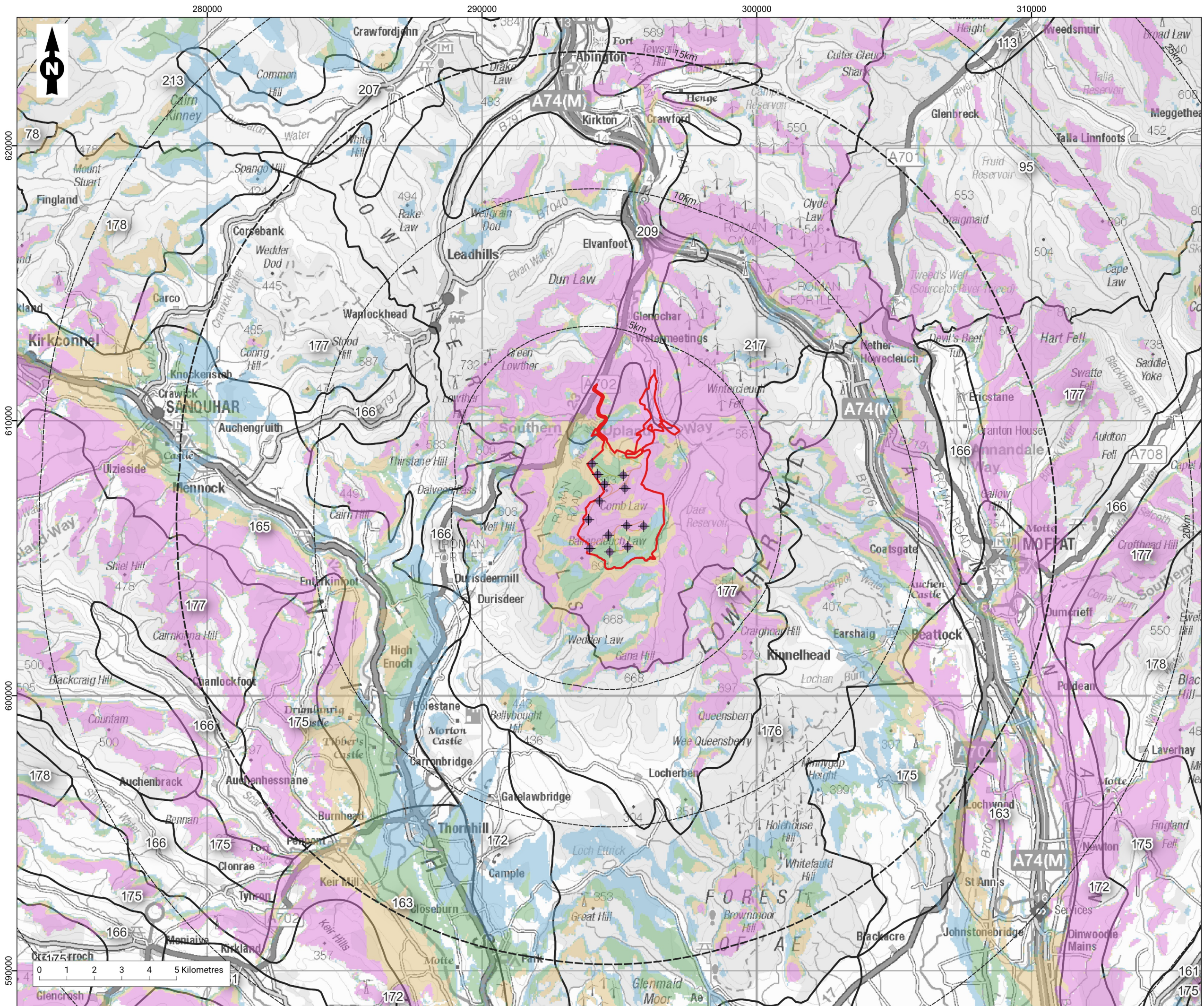
Project Name
Watchman Energy Park

Project No.
24014

Date	Figure No.	Revision
February 2026	4.7	r3

Prepared By	Scale
AS	1:28,000 @ A3

Client
Watchman Energy Park Ltd



Legend

- Turbine locations
- Distance to turbines (5km intervals)
- Site boundary

Zone of Theoretical Visibility

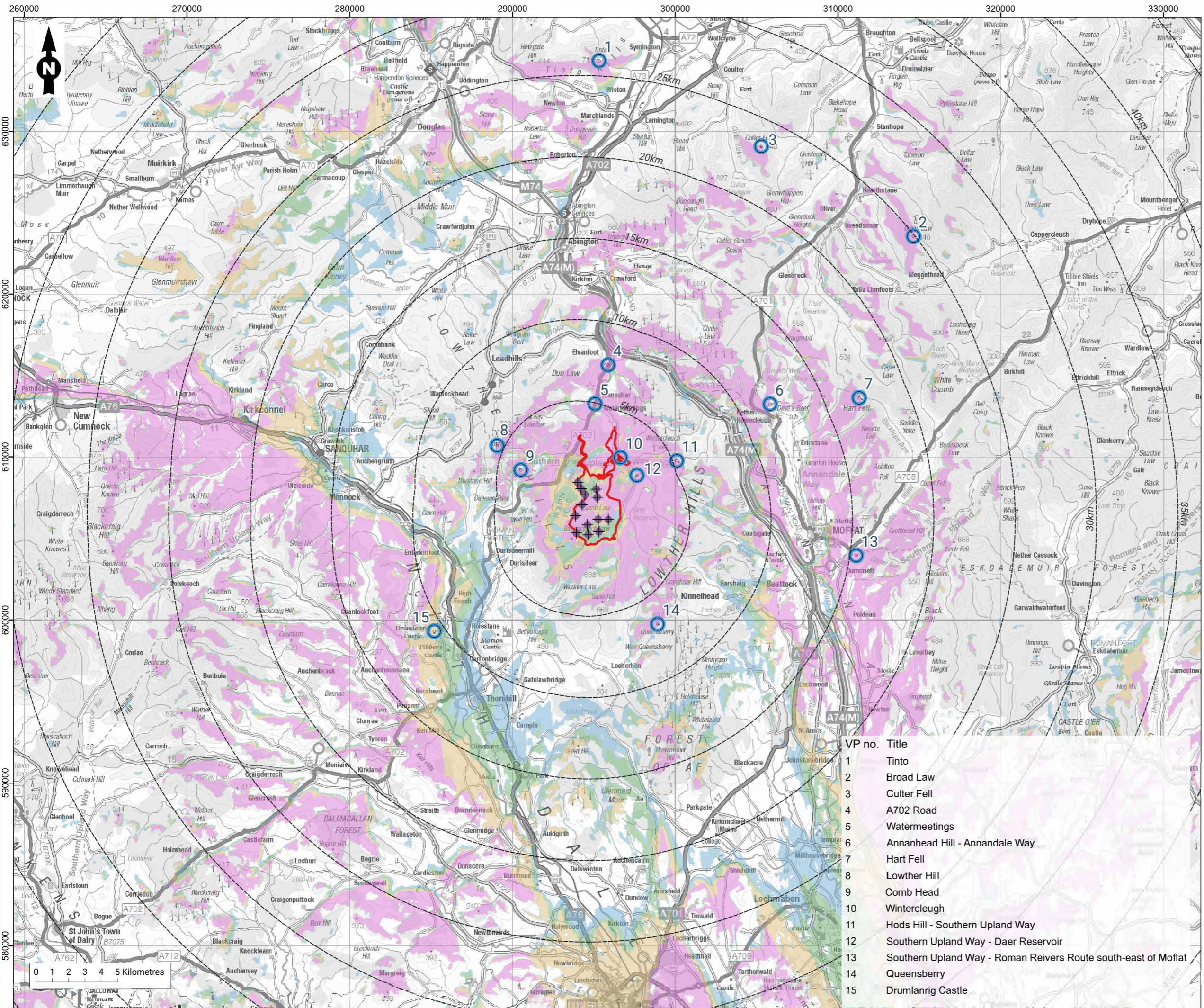
- 1 - 3 turbines visible
- 4 - 6 turbines visible
- 7 - 9 turbines visible
- 10 - 13 turbines visible

Landscape Character Types

- 78 Plateau Moorland - Ayrshire
- 95 Southern Uplands - Borders
- 113 Upland Valley with Pastoral Floor
- 161 Pastoral Valley - Dumfries & Galloway
- 163 Middle Dale - Dumfries & Galloway
- 165 Upper Dale - Dumfries & Galloway
- 166 Upland Glens - Dumfries & Galloway
- 172 Upland Fringe - Dumfries & Galloway
- 175 Foothills - Dumfries & Galloway
- 176 Foothills with Forest - Dumfries & Galloway
- 177 Southern Uplands - Dumfries & Galloway
- 178 Southern Uplands with Forest - Dumfries & Galloway
- 207 Upland River Valley - Glasgow & Clyde Valley
- 209 Upland Glen - Glasgow & Clyde Valley
- 213 Plateau Moorlands - Glasgow & Clyde Valley
- 217 Southern Uplands - Glasgow & Clyde Valley

Notes: The ZTV is calculated to turbine tip heights of up to 240m, from a height of 2m above ground level. The terrain model is bare ground derived from OS Terrain 50 height data. Earth curvature and atmospheric refraction have been taken into account.

Figure Title		
Landscape Character		
Project Name		
Watchman Energy Park		
Project No.		
24014		
Date	Figure No.	Revision
November 2025	4.8	r3
Prepared By	Scale	
AS	1:130,000 @ A3	
Client		
Watchman Energy Park Ltd		



Legend

- Turbine locations
- Distance to turbines (5km intervals)
- Site boundary

Zone of Theoretical Visibility

- 1 - 3 turbines visible
- 4 - 6 turbines visible
- 7 - 9 turbines visible
- 10 - 13 turbines visible

- Viewpoints (see inset for detail)

Notes: The ZTV is calculated to turbine tip heights of up to 240m, from a height of 2m above ground level. The terrain model is bare ground derived from OS Terrain 50 height data. Earth curvature and atmospheric refraction have been taken into account.

Figure Title
Viewpoints

Project Name
Watchman Energy Park

Project No.
24014

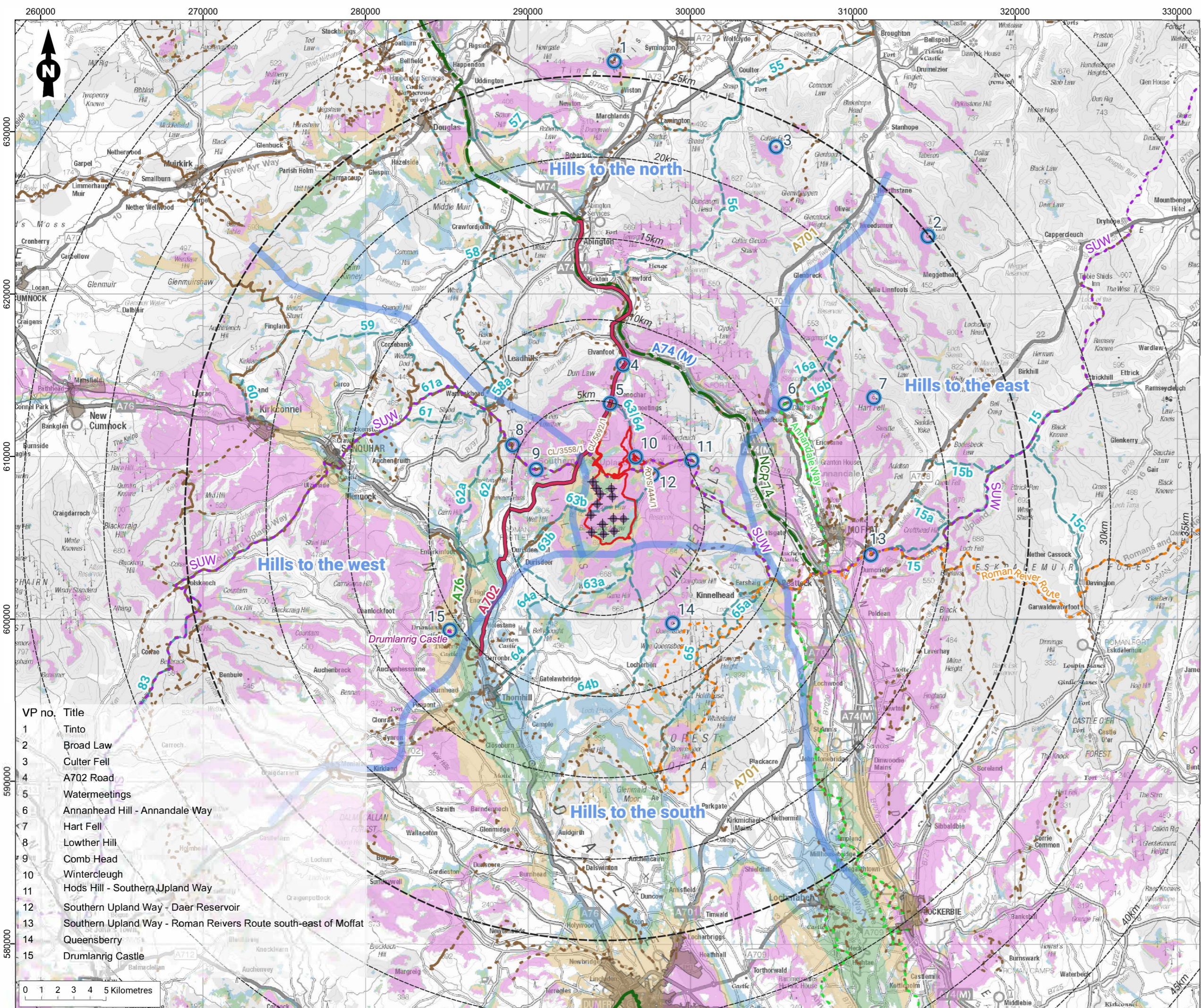
Date	Figure No.	Revision
January 2026	4.9	r4

Prepared By	Scale
AS	1:220,000 @ A3

Client
Watchman Energy Park Ltd



VP no.	Title
1	Tinto
2	Broad Law
3	Culter Fell
4	A702 Road
5	Watermeetings
6	Annanhead Hill - Annandale Way
7	Hart Fell
8	Lowther Hill
9	Comb Head
10	Wintercleugh
11	Hods Hill - Southern Upland Way
12	Southern Upland Way - Daer Reservoir
13	Southern Upland Way - Roman Reivers Route south-east of Moffat
14	Queensberry
15	Drumlanrig Castle



Legend

- Turbine locations
- Distance to turbines (5km intervals)
- Site boundary

Zone of Theoretical Visibility

- 1 - 3 turbines visible
- 4 - 6 turbines visible
- 7 - 9 turbines visible
- 10 - 13 turbines visible

- Viewpoints (see inset for detail)

Visual receptors

- Settlements
- A702 Road
- National Cycle Route (NCR) 74
- Southern Upland Way (SUW)
- Annandale Way
- Romans and Reivers Route
- Core Paths (see Figure 4.11 for detail)
- Scottish Hill Tracks (see Figure 4.11 for detail)
- Hill top areas
- Drumlanrig Castle

Notes: The ZTV is calculated to turbine tip heights of up to 240m, from a height of 2m above ground level. The terrain model is bare ground derived from OS Terrain 50 height data. Earth curvature and atmospheric refraction have been taken into account.

VP no.	Title
1	Tinto
2	Broad Law
3	Culter Fell
4	A702 Road
5	Watermeetings
6	Annanhead Hill - Annandale Way
7	Hart Fell
8	Lowther Hill
9	Comb Head
10	Wintercleugh
11	Hods Hill - Southern Upland Way
12	Southern Upland Way - Daar Reservoir
13	Southern Upland Way - Roman Reivers Route south-east of Moffat
14	Queensberry
15	Drumlanrig Castle

Figure Title
Visual Receptors to 25 km



Project Name
Watchman Energy Park

Project No.
24014

Date	Figure No.	Revision
February 2026	4.10	r7

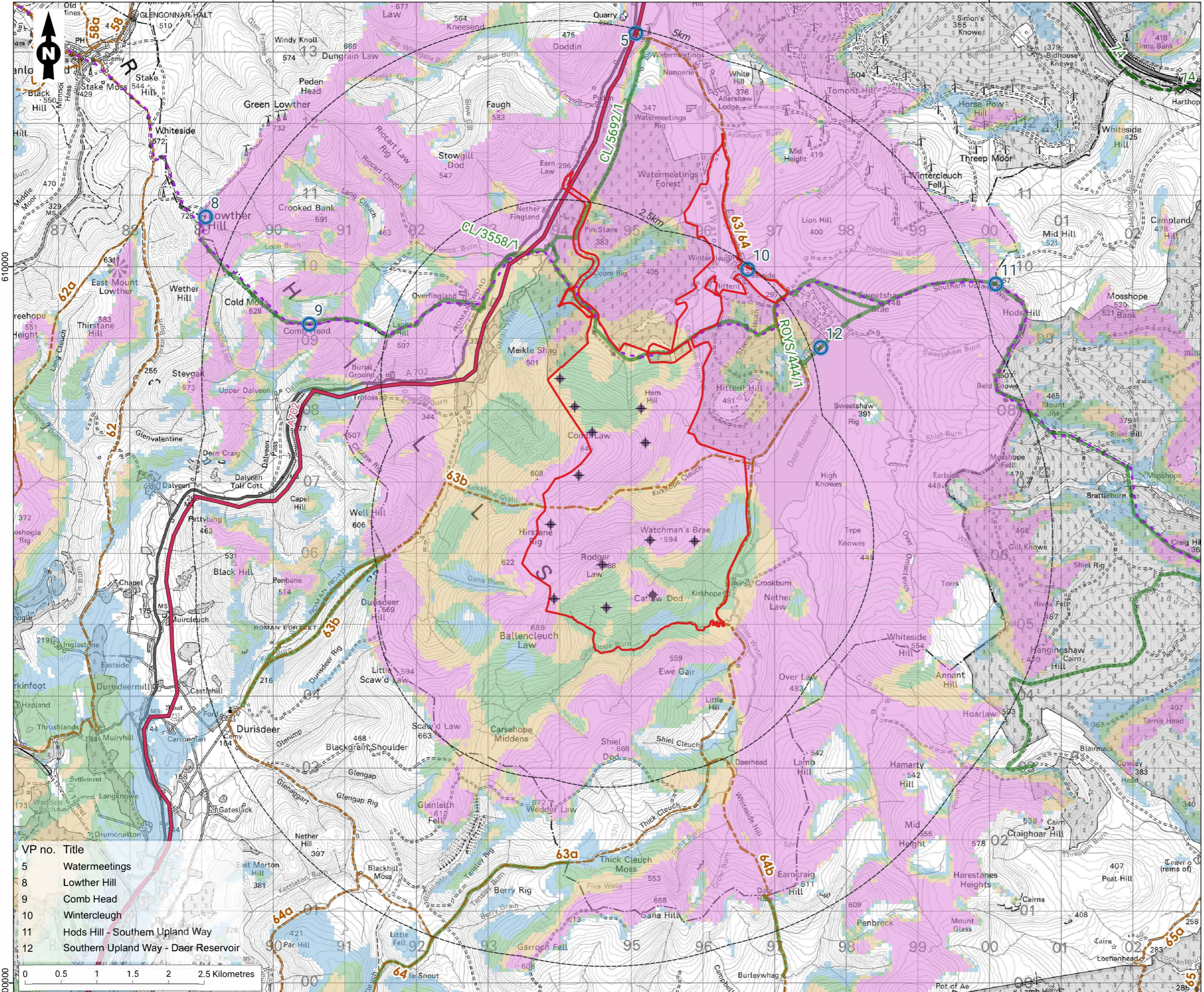
Prepared By	Scale
AS	1:220,000 @ A3

Client
Watchman Energy Park Ltd

290000

300000



Legend

- Turbine locations
- Distance to turbines (2.5km intervals)
- Site boundary

Zone of Theoretical Visibility

- 1 - 3 turbines visible
- 4 - 6 turbines visible
- 7 - 9 turbines visible
- 10 - 13 turbines visible

- Viewpoints (see inset for detail)

Visual receptors

- A702 Road
- National Cycle Network, Route 74
- Southern Upland Way
- Core paths to 5 km
- Scottish Hill Tracks:
 - 62. Wanlockhead to Enterkinfoot by the Enterkin Pass
 - 63. Kirkhope Cleuch (Daer Reservoir) to Durisdeer
 - 64. Kirkhope Cleuch (Daer Reservoir) to Thornhill

Notes: The ZTV is calculated to turbine tip heights of up to 240m, from a height of 2m above ground level. The terrain model is bare ground derived from OS Terrain 50 height data. Earth curvature and atmospheric refraction have been taken into account.

Figure Title
Visual Receptors to 5 km

Project Name
Watchman Energy Park

Project No.
24014

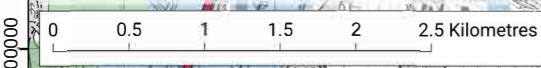
Date	Figure No.	Revision
January 2026	4.11	r2

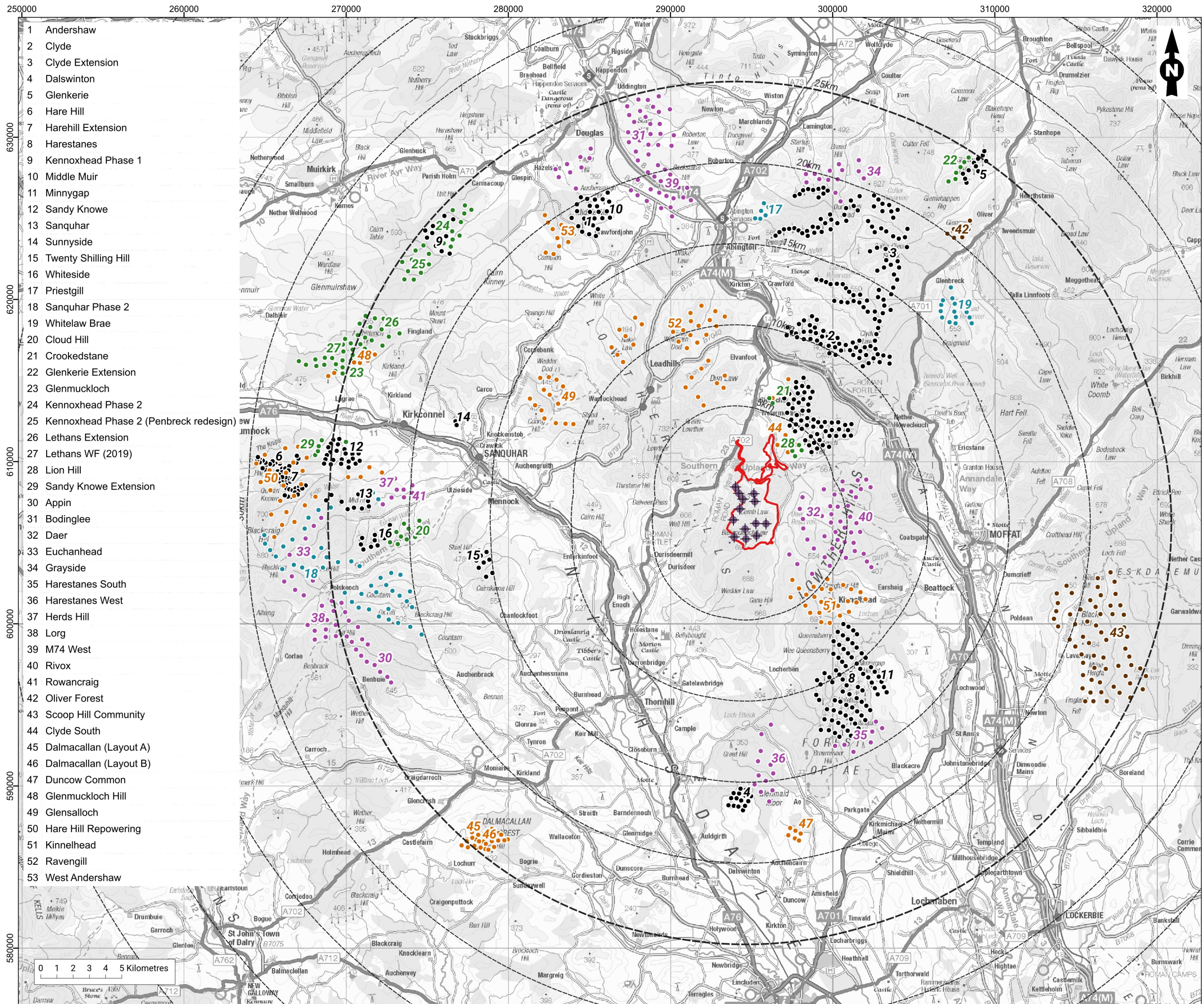
Prepared By	Scale
AS	1:50,000 @ A3

Client
Watchman Energy Park Ltd



VP no.	Title
5	Watermeetings
8	Lowther Hill
9	Comb Head
10	Wintercleugh
11	Hods Hill - Southern Upland Way
12	Southern Upland Way - Daer Reservoir





Legend

- Turbine locations
- Distance to turbines (5km intervals)
- Site boundary

Other Wind Farms (see inset for Site names)

- operational
- under construction
- consented
- application
- scoping
- appealed

Figure Title
Cumulative Baseline to 25 km

Project Name
Watchman Energy Park

Project No.
24014

Date	Figure No.	Revision
January 2026	4.12	r2

Prepared By	Scale
AS	1:220,000 @ A3

Client
Watchman Energy Park Ltd

