

Legend

- Turbine location
 - Lit turbine: 9
- Distance to turbines (5km intervals)
 - Distance to turbines (5km intervals)
- Site boundary
 - Site boundary
- Vertical angles
 - <0 to -1 degrees
 - <-1 to -2 degrees
 - <-2 to -3 degrees
 - <-3 to -4 degrees
 - <-4 degrees and below

Notes: The ZTV shows vertical angles calculated for a hub height of 155m, and a height of 2m above ground level. The terrain model is bare ground derived from OS Terrain 50 height data. Earth curvature and atmospheric refraction have been taken into account.

Figure Title
 Hub Lighting Zone of Theoretical Visibility to 20km showing Angle of Light Emission - Turbine 9

Project Name
 Watchman Energy Park

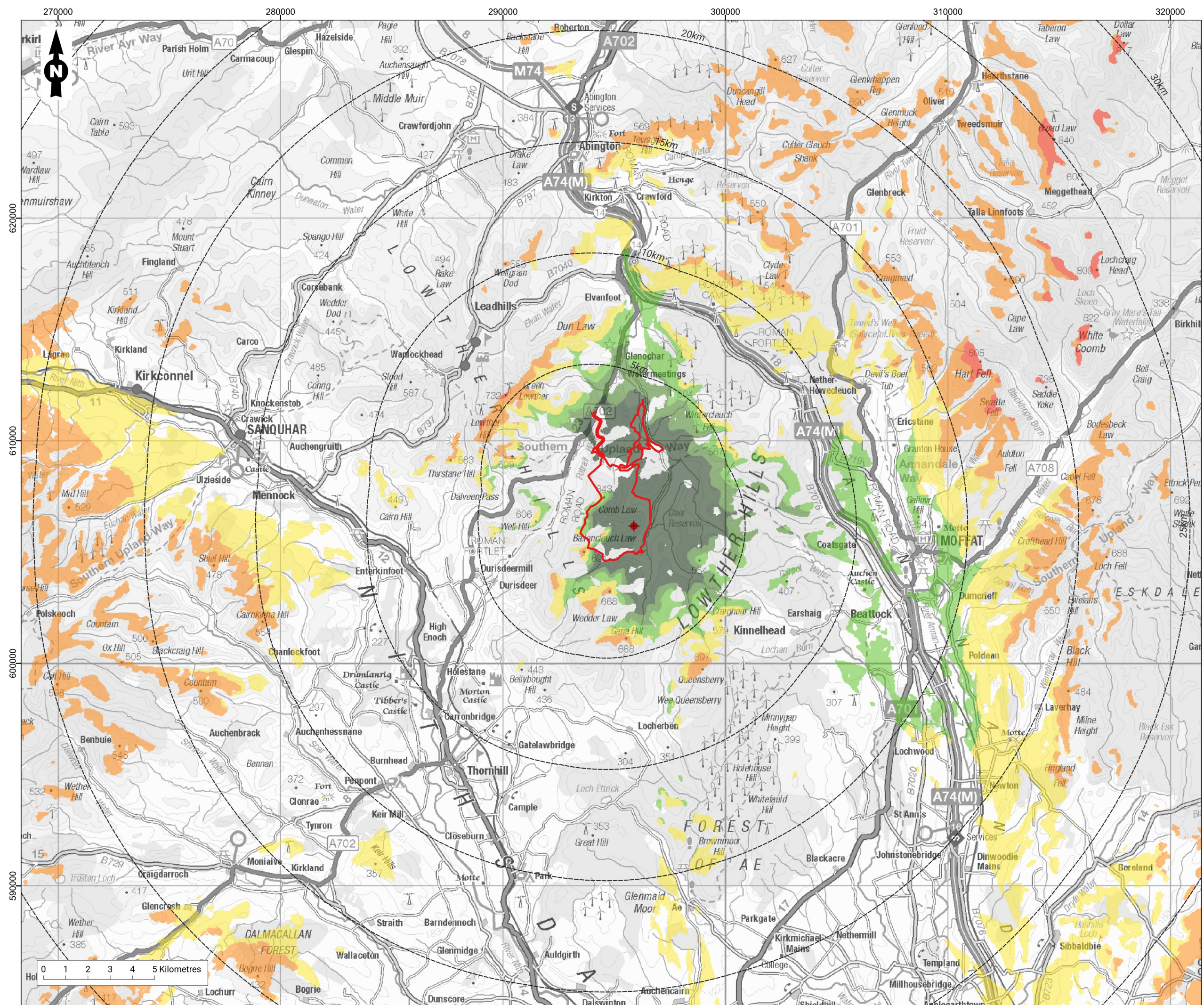
Project No.
 24014

| | | |
|--------------|------------|----------|
| Date | Figure No. | Revision |
| October 2025 | 4.18.5 | r0 |

| | |
|-------------|----------------|
| Prepared By | Scale |
| AS | 1:160,000 @ A3 |

Client
Watchman Energy Park Ltd





Legend

- Turbine location
 - Lit turbine: 11
- Distance to turbines (5km intervals)
 - Dashed line
- Site boundary
 - Red outline
- Vertical angles
 - 0 to <math><1^{\circ}</math>
 - <math><0^{\circ}</math> to -1°
 - <math><-1^{\circ}</math> to -2°
 - <math><-2^{\circ}</math> to -3°
 - <math><-3^{\circ}</math> to -4°
 - <math><-4^{\circ}</math> degrees and below

Notes: The ZTV shows vertical angles calculated for a hub height of 155m, and a height of 2m above ground level. The terrain model is bare ground derived from OS Terrain 50 height data. Earth curvature and atmospheric refraction have been taken into account.

Figure Title
 Hub Lighting Zone of Theoretical Visibility to 20km showing Angle of Light Emission - Turbine 11

Project Name
 Watchman Energy Park

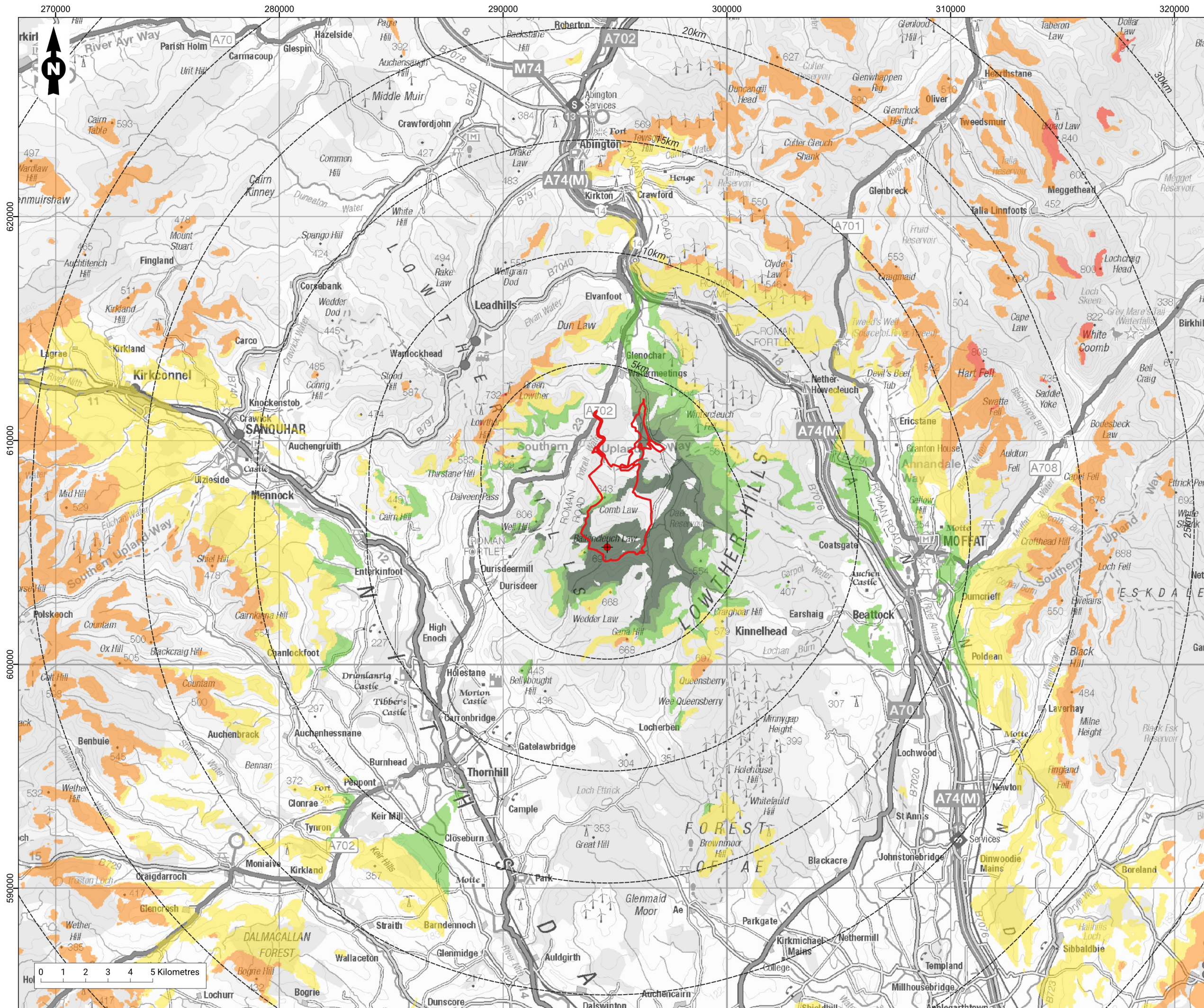
Project No.
 24014

| | | |
|--------------|------------|----------|
| Date | Figure No. | Revision |
| October 2025 | 4.18.6 | r0 |

| | |
|-------------|----------------|
| Prepared By | Scale |
| AS | 1:160,000 @ A3 |

Client
 Watchman Energy Park Ltd

MVGLA Landscape Architecture | RAMBOLL



Legend

- Turbine location
 - Lit turbine: 13
- Distance to turbines (5km intervals)
 - (dashed line)
- Site boundary
 - (red outline)
- Vertical angles
 - 0 to <1 degrees (red)
 - <0 to -1 degrees (orange)
 - <-1 to -2 degrees (yellow)
 - <-2 to -3 degrees (light green)
 - <-3 to -4 degrees (medium green)
 - <-4 degrees and below (dark green)

Notes: The ZTV shows vertical angles calculated for a hub height of 155m, and a height of 2m above ground level. The terrain model is bare ground derived from OS Terrain 50 height data. Earth curvature and atmospheric refraction have been taken into account.

Figure Title
 Hub Lighting Zone of Theoretical Visibility to 20km showing Angle of Light Emission - Turbine 13

Project Name
 Watchman Energy Park

Project No.
 24014

| | | |
|--------------|------------|----------|
| Date | Figure No. | Revision |
| October 2025 | 4.18.7 | r0 |

| | |
|-------------|----------------|
| Prepared By | Scale |
| AS | 1:160,000 @ A3 |

Client
 Watchman Energy Park Ltd

