

- Proposal
- Consented
- Application
- Appealed
- Existing
- Construction
- Scoping

OS Reference: 295884 609177  
 Eye Level: 324.59m AOD  
 Direction of View: 220°  
 Distance to Development: 1376m

Horizontal field of view: 90° (cylindrical projection)  
 Principal Distance: 522mm  
 Paper Size: 841 x 297mm  
 Correct printed image size: 820 x 130mm

Camera: NIKON D610  
 Lens: 50mm  
 Camera Height: 3.5m AGL  
 Date and Time: 22/10/2025 13:55

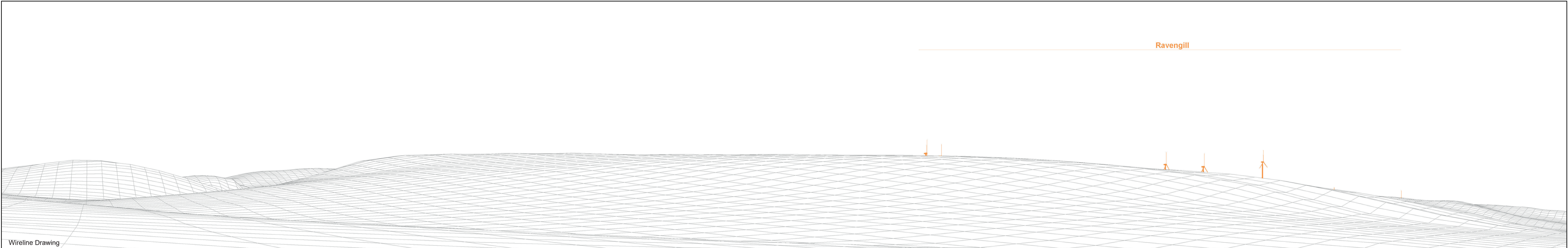
Cultural Heritage Viewpoint 1: Smithwood Bastle House

Figure: 5.4.1

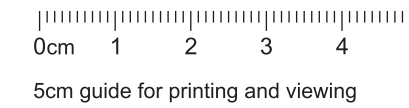
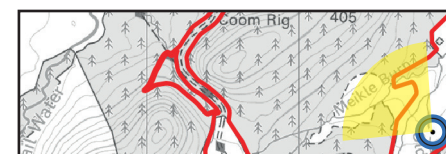


Baseline Photograph

This image provides landscape and visual context only



Wireline Drawing



- Proposal
- Consented
- Application
- Appealed
- Existing
- Construction
- Scoping

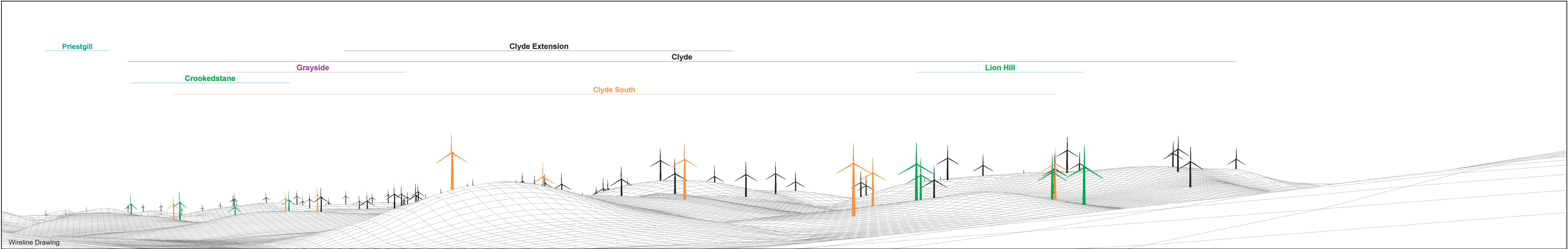
OS Reference: 295884 609177  
 Eye Level: 324.59m AOD  
 Direction of View: 310°  
 Distance to Development: 1376m

Horizontal field of view: 90° (cylindrical projection)  
 Principal Distance: 522mm  
 Paper Size: 841 x 297mm  
 Correct printed image size: 820 x 130mm

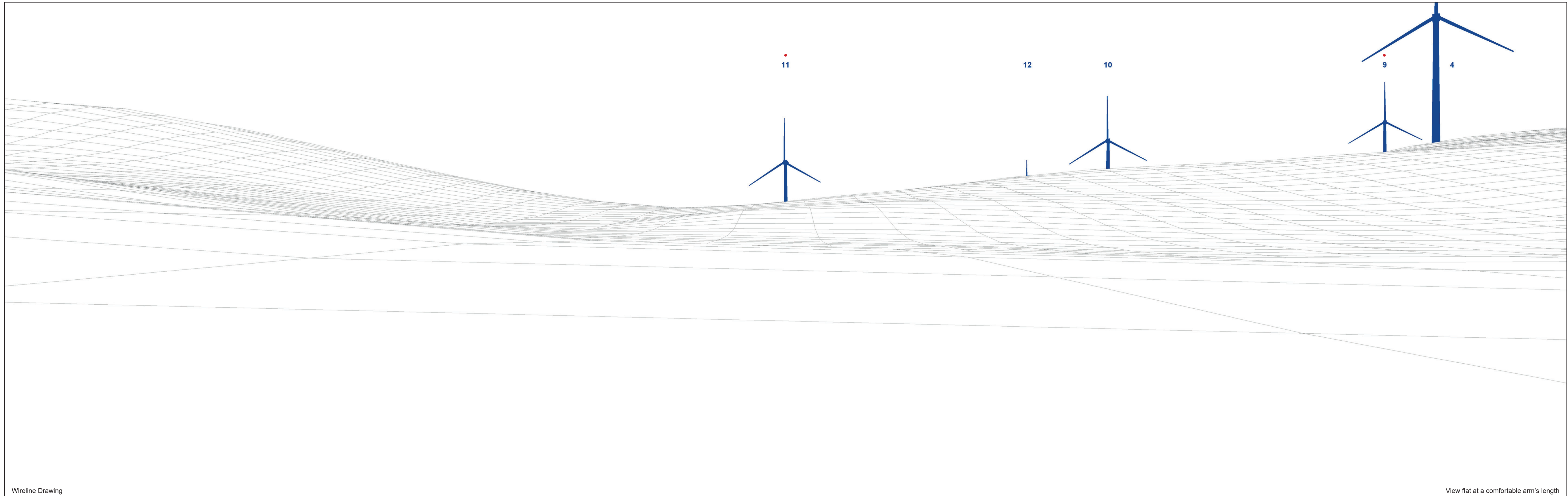
Camera: NIKON D610  
 Lens: 50mm  
 Camera Height: 3.5m AGL  
 Date and Time: 22/10/2025 13:55

Cultural Heritage Viewpoint 1: Smithwood Bastle House

Figure: 5.4.2



		 0cm 1 2 3 4 5 5cm guide for printing and viewing	 Proposal     Consented     Application     Appealed Existing     Construction     Scoping	OS Reference: 295884 609177 Eye Level: 324.59m AOD Direction of View: 40° Distance to Development: 1376m	Horizontal field of view: 90° (cylindrical projection) Principal Distance: 522mm Paper Size: 841 x 297mm Correct printed image size: 820 x 130mm	Camera: NIKON D610 Lens: 50mm Camera Height: 3.5m AGL Date and Time: 22/10/2025 13:55	Figure: 5.4.3 Cultural Heritage Viewpoint 1: Smithwood Bastle House
--	--	---	--	---	---	--	--

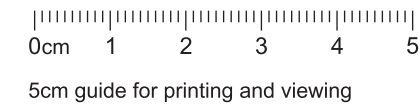


Wireline Drawing

View flat at a comfortable arm's length



- Aviation Light
- ✦ Proposal
- ✦ Existing
- ✦ Construction



OS Reference: 295884 609177  
 Eye Level: 324.59m AOD  
 Direction of View: 180°  
 Distance to Development: 1376m

Horizontal field of view: 53.5° (planar projection)  
 Principal Distance: 812.5mm  
 Paper Size: 841 x 297mm  
 Correct printed image size: 820 x 260mm

Camera: NIKON D610  
 Lens: 50mm  
 Camera Height: 3.5m AGL  
 Date and Time: 22/10/2025 13:55

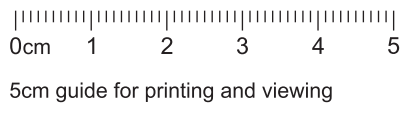
Cultural Heritage Viewpoint 1: Smithwood Bastle House

Figure: 5.4.4



Photomontage

View flat at a comfortable arm's length



5cm guide for printing and viewing

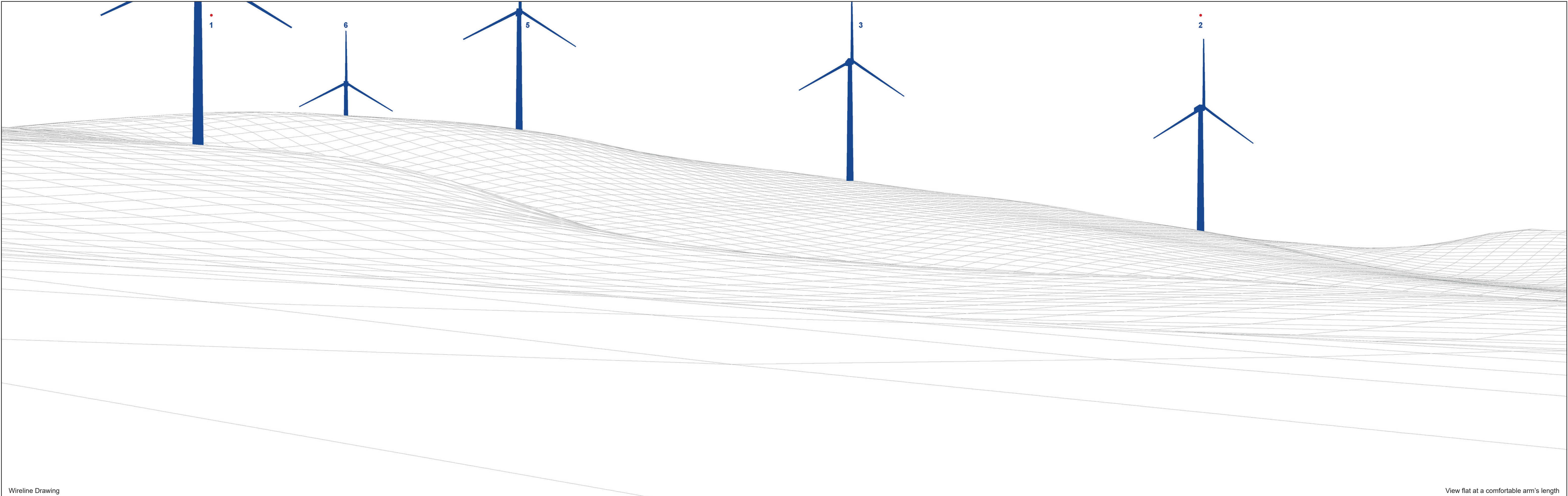
OS Reference: 295884 609177  
 Eye Level: 324.59m AOD  
 Direction of View: 180°  
 Distance to Development: 1376m

Horizontal field of view: 53.5° (planar projection)  
 Principal Distance: 812.5mm  
 Paper Size: 841 x 297mm  
 Correct printed image size: 820 x 260mm

Camera: NIKON D610  
 Lens: 50mm  
 Camera Height: 3.5m AGL  
 Date and Time: 22/10/2025 13:55

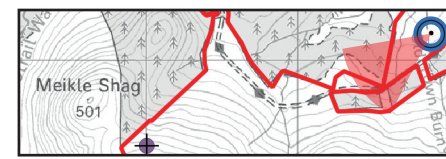
Cultural Heritage Viewpoint 1: Smithwood Bastle House

Figure: 5.4.5

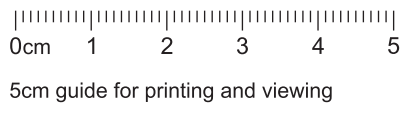


Wireline Drawing

View flat at a comfortable arm's length



- Aviation Light
- ✦ Proposal
- ✦ Existing
- ✦ Construction



OS Reference: 295884 609177  
 Eye Level: 324.59m AOD  
 Direction of View: 233.5°  
 Distance to Development: 1376m

Horizontal field of view: 53.5° (planar projection)  
 Principal Distance: 812.5mm  
 Paper Size: 841 x 297mm  
 Correct printed image size: 820 x 260mm

Camera: NIKON D610  
 Lens: 50mm  
 Camera Height: 3.5m AGL  
 Date and Time: 22/10/2025 13:55

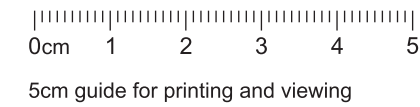
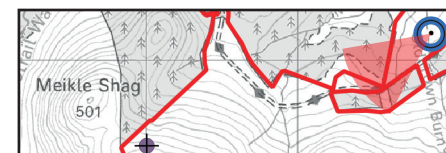
Cultural Heritage Viewpoint 1: Smithwood Bastle House

Figure: 5.4.6



Photomontage

View flat at a comfortable arm's length



OS Reference: 295884 609177  
 Eye Level: 324.59m AOD  
 Direction of View: 233.5°  
 Distance to Development: 1376m

Horizontal field of view: 53.5° (planar projection)  
 Principal Distance: 812.5mm  
 Paper Size: 841 x 297mm  
 Correct printed image size: 820 x 260mm

Camera: NIKON D610  
 Lens: 50mm  
 Camera Height: 3.5m AGL  
 Date and Time: 22/10/2025 13:55

Cultural Heritage Viewpoint 1: Smithwood Bastle House

Figure: 5.4.7